

# AMG350-5G SERIES INDUSTRIAL UNMANAGED SWITCHES WITH OPTIONAL 30W POE



## Industrial Ethernet Solutions

AMG's unmanaged Ethernet switches provide 100Mbps or Gigabit Ethernet switching for simple edge network applications with optional 30W PoE. Available with 5x Gigabit RJ45 ports.



 Gigabit up to x5	 Gigabit up to x4	 Temp -40°C~+75°C	 Mounting DIN/Surface	 PSU x2 Dual	 Protection IP40	 NDA/TAA Compliant
---	---	---	---	--	--	--

[ AMG350-5G Series ]

### / OVERVIEW

Designed in a compact DIN rail or wall mount housing, the AMG350 series unmanaged Ethernet switches are ideally suited for connecting edge devices to Ethernet networks where more complex management functions are not required.

Available in both non-PoE models as well as PoE models for IEEE802.3at 30W they are suitable for powering PoE devices over a wide industrial operating temperature range.

Fitted with dual redundant power inputs ensures maximum operating reliability and the highest levels of performance.

A wide range of models are available in the AMG350 product range to suit all unmanaged switch design requirements.

PSUs need to be ordered separately.

### / FEATURES

- Compact size – ideal for confined spaces, including camera poles and roadside cabinets
- Innovative thermally efficient housing ensures high levels of device reliability under full load
- -40°C to +75°C temperature maintains performance in extreme conditions
- Plug & Play – no need for any user configuration
- DIN rail mountable – quick to install and remove
- Dual redundant power inputs
- Supports optional 15W and 30W PoE
- Auto-Negotiation (802.3u) – automatically determines the best connection speed
- Supports wide ranging DC or AC power inputs
- Designed in the USA & UK. Manufactured in the United Kingdom
- AMG Lifetime Support Warranty

# Specifications.

## Standards.

IEEE802.3i	10Base-T
IEEE802.3u	100Base-TX
IEEE802.3ab	1000Base-T
IEEE802.3af	15W PoE
IEEE802.3at	30W PoE+
IEEE802.3x	Flow Control

Jumbo Frames	9.6Kbytes
Address Table	2K MAC Entries
Switch Fabric	10 Gbps
Buffer Memory	1M bits

## Interface.

LED Indicators	2x Power RJ45 Link/Activity RJ45 Speed (Non-PoE Models Only) PoE (PoE Models Only)
RJ45 Ports	5x 10/100/1000T(X) RJ45 with Auto MDI/MDI-X with 2 kV Isolation Protection
Power	1x 4-way Screw Terminal

## Power.

Power Inputs	2
Operating Voltage:	
Non-PoE Models	12-60V <sub>DC</sub> or 18-36V <sub>AC</sub>
30W PoE Models	48-56V <sub>DC</sub>
Power Consumption	3W Max (without PoE Load)
Total PoE Budget	120W Max (model dependent)
PSE Modes	Mode A
PoE Enabled Ports	Ports 1-4 (model dependent)
Protection	Reverse Polarity Overload Current

## Packaging.

Shipping Weight	0.59kg / 1.30lb
Dimensions	(W x D x H) 220 x 170 x 40 mm 8.66 x 6.69 x 1.57 in

## Mechanical.

Housing	Anodised Aluminium
Dimensions:	(W x D x H) 37 x 88 x 107 mm 1.46 x 3.46 x 4.21 in
Excluding DIN & Wall Mounts	
IP Rating	IP40
Installation	Wall Mount or DIN-Rail
Weight	0.47kg / 1.04lb

## Environmental.

Operating Temp.	-40 to +75°C / -40 to +167°F
Storage Temp.	-40 to +85°C / -40 to +185°F
Humidity	5% to 95% (non-condensing)
MTBF	>500,000 hours
MTBF Standard	MIL-HDBK-217F GF 25°C
Heat Dissipation	10 BTU/h (Non-PoE) 420 BTU/h (30W PoE)
Cooling	Passive Cooling
Noise Level	0 dBA

## Regulatory.

Safety	IEC/EN 62368-1
EMI	EN 55032 Class A CISPR 32 EN55024 FCC Part 15B Class A
EMS	EN 61000-4-2 (ESD) EN 61000-4-4 (EFT) EN 61000-4-5 (Surge)
Shock	IEC 60068-2-27
Free Fall	IEC 60068-2-32
Vibration	IEC 60068-2-6
Environmental	Reach RoHS WEEE
Traffic	NEMS TS2
Supply Chain	NDAA & TAA Compliant

Designed to meet EN 50121-4

# Part Numbers.

---

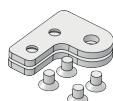
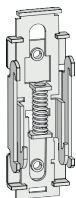
## 5 Port Unmanaged 1Gb Ethernet Switches

AMG350-5G	5x 10/100/1000TX
AMG350-4GAT-1G-P120	4x 10/100/1000TX 30W PoE (120W Max), 1x 10/100/1000TX

## Included Accessories.

---

DIN Rail Adapter      Rear Mounted Metal DIN Rail Clip & Screws For DIN Rail Mounting AMG350 Series Products  
Wall Mounting Brackets      2x Wall Mounting Brackets & Screws For Wall / Surface Mounting AMG350 Series Products



## Recommended PSUs.

---

### Non-PoE Models

AMGPSU-W12-P25      Plug Top Mounting Light Industrial Grade PSU, 0 to +70°C, 12VDC, 25W, UK/EU/US Plug Heads Included  
AMGPSU-I12-P24      DIN-Rail Mount Industrial Grade PSU, -40 to +70°C, 12VDC, 24W\*

### PoE Models

AMGPSU-I48-P120      DIN-Rail Mounting Industrial Grade PSU, -40 to +70°C, 47-53VDC, 120W\*\*  
AMGPSU-I48-P240      DIN-Rail Mounting Industrial Grade PSU, -40 to +70°C, 48-53VDC, 240W\*\*

\* Also available in kit form including mains line cord, DC cable and DIN rail. Order with -K at the end of the part code (e.g. AMGPSU-I48-P120-K).

^ Also available with no exposed mains terminals and direct IEC input kit. Order with -IEC at the end of the part code (e.g. AMGPSU-I48-P120-IEC).


## Optional Accessories.

---

AMG2035      Side Mounted Wall Bracket Adapter Kit For DIN Rail Mounting AMG350 Series Products In Depth Restricted Installations.  
Adapter Kit Can Be Extended Using The Included Extension Kit To Also Mount A DIN Rail Power Supply Up To 480W

In a continuing effort to improve and advance technology, product specifications are subject to change without notice. Please visit [www.amgsystems.com](http://www.amgsystems.com) for the latest product specifications.

AMG Systems Ltd. 4 Pioneer Way, Castleford, WF10 5QU, UK T: +44 (0) 1767 600 777 E: [sales@amgsystems.com](mailto:sales@amgsystems.com)  
AMG Systems Inc. 62 Spring Hill Road, Trumbull, CT 06611, USA T: +1-855-AMGPOE1 (855-264-7631) E: [sales@amgsystems.com](mailto:sales@amgsystems.com)  
D33403-03 [amgsystems.com](http://amgsystems.com)

Proud to be a British  
Manufacturer 

**AMG**