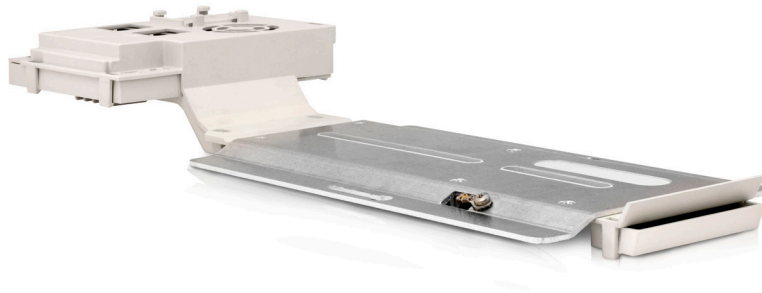


Outdoor HD Enclosure PoE Module Accessory



ES-HD-IPM

PoE+ input power module retrofit kit for Outdoor High Definition Camera Enclosures.

The PoE module allows the enclosure and the camera to be powered and networked by a single PoE or PoE+ connection providing a quick and easy installation. The module intelligently distributes the available power to camera, cooling fan (if equipped) and heater. In cold weather conditions, the module will automatically preheat the housing before starting the camera.

The module is compatible with ES-HD-HWS, ES-HD-CWS, ES-HD-HWS-LG and ES-HD-CWS-LG housings.

Power Consumption	PoE class 3 (13W) Hi-PoE class 4 (24W)	Heater Operation	On: 20°C ±2°C (68°F ±4°F) Off: 23°C ±2°C (73.4°F ±4°F)	
Power Available to Cameras	PoE class 3 input: PoE class 2 (7W) Hi-PoE class 4 input: PoE class 3 (13W)	Cooler Operation (For housings equipped with cooling fans)	On: 35°C ±2°C (95°F ±4°F) Off: 32°C ±2°C (89.6°F ±4°F)	
Cold Start (Pre-heat housing)	Activated upon power on when temperature is below 0°C Duration: 60 min to 120min, depending on environment			
Operating Temperature	Enclosure	Camera	External Ambient Temperature with PoE + Class 4	External Ambient Temperature with PoE Class 3
	ES-HD-HWS	H.264 HD Cameras (H3-B)	-20°C to 40°C (-4°F to 104°F)	-10°C to 40°C (14°F to 104°F)
	ES-HD-HWS-LG	JPEG2000 HD PRO Cameras (HD-PRO)	-20°C to 35°C (-4°F to 95°F)	n/a
		H.264 HD PRO Cameras (H4PRO-B)	-20°C to 37°C (-4°F to 98.6°F)	n/a
	ES-HD-CWS	H.264 HD Cameras (H3-B)	-10°C to 48°C (14°F to 118°F)	-10°C to 48°C (14°F to 118°F)
	ES-HD-CWS-LG	JPEG2000 HD PRO Cameras (HD-PRO)	-10°C to 48°C (14°F to 118°F)	n/a
H.264 HD PRO Cameras (H4PRO-B)		-10°C to 48°C (14°F to 118°F)	n/a	