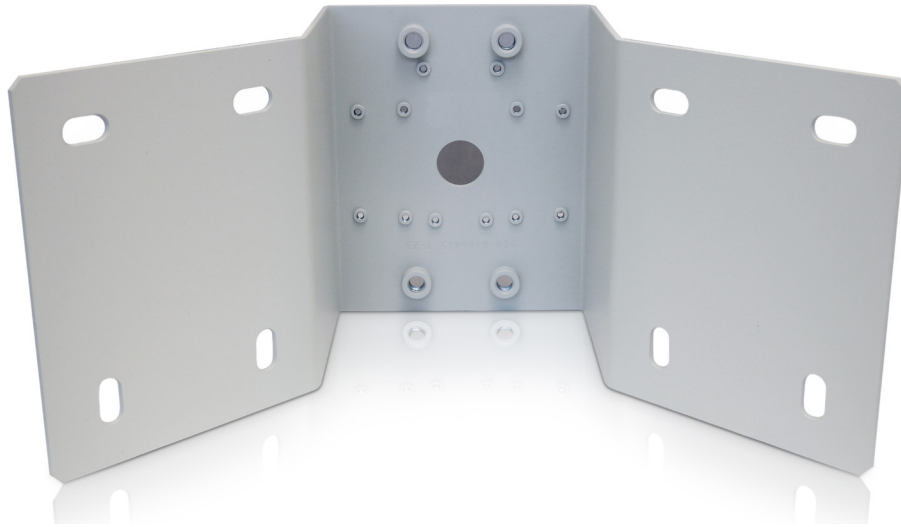


# Corner Mounting Bracket

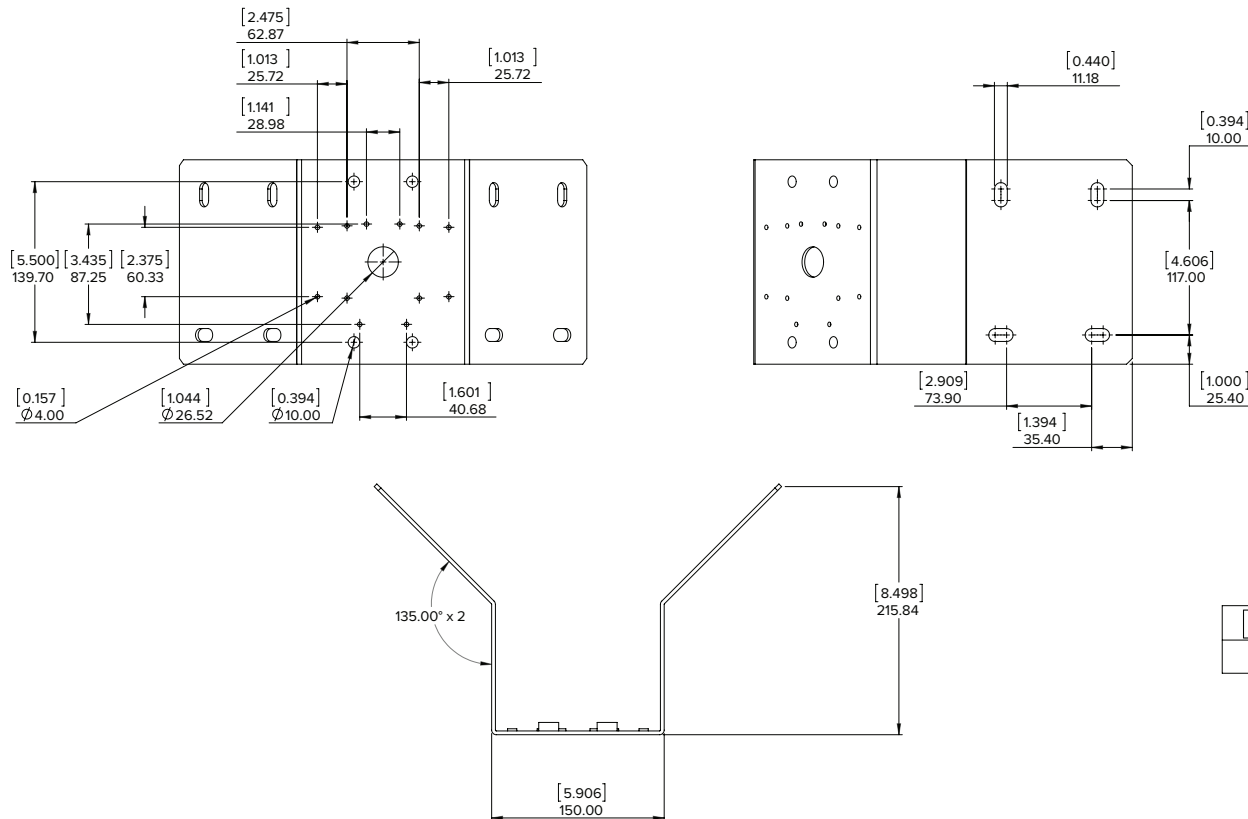


H4-MT-CRNR1

Aluminum corner mounting bracket for H4A-DP dome cameras using the pendant wall mount and H4A-BO-IR Bullet Cameras

Weight: 1.24 kg (2.73 lbs)

- |  |   |
|--|---|
| <ul style="list-style-type: none"> <li>• Female inserts</li> <li>• Compatible with:             <ul style="list-style-type: none"> <li>• Pendant Wall Mount (H4A-MT-WALL1)</li> <li>• HD Bullet Cameras (H4A-BO-IR)</li> <li>• HD Bullet Camera Junction Box (H4-BO-JBOX1)</li> </ul> </li> <li>• Wall mounting hardware not included</li> <li>• RAL 9003</li> </ul> | <p>Included components for Avigilon camera and accessories:</p> <ul style="list-style-type: none"> <li>• 4 x Hex head bolts (3/8" – 16 x 1")</li> <li>• 4 x Lock washers (3/8")</li> <li>• 4 x Flat washers (3/8")</li> <li>• 4 x Hex head bolts (M4-0.7 x 30)</li> <li>• 4 x Lock Washers (M4)</li> <li>• 4 x Flat washers (M4)</li> </ul> |
|--|---|



|       |        |
|-------|--------|
| [X.X] | INCHES |
| X     | MM     |

SUPPORT 1.888.281.5182 | sales@avigilon.com | avigilon.com