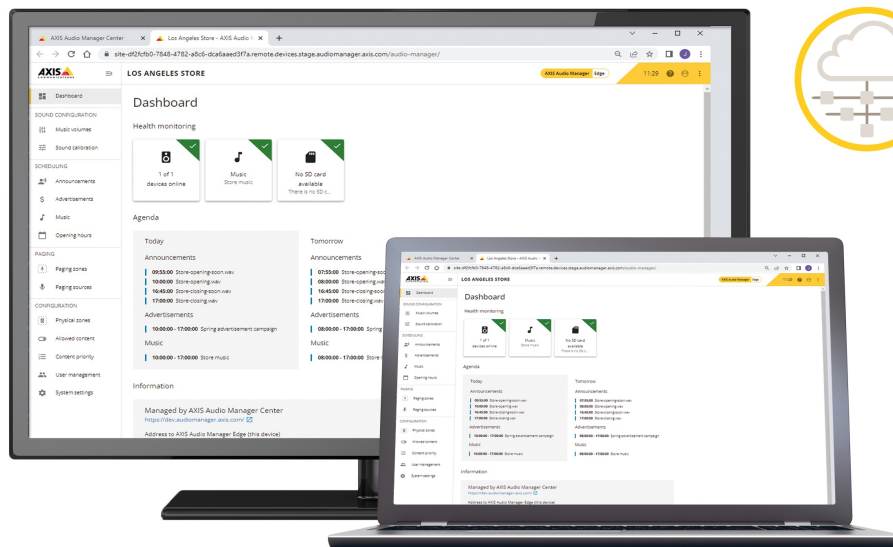


# AXIS Audio Manager Center

## Multisite audio management software

AXIS Audio Manager Center is a subscription-based service for remote management and monitoring of multisite systems using AXIS Audio Manager Edge locally. The hybrid cloud solution uses both cloud-based and on-premises components for a convenient and stable solution. It significantly reduces user workloads, with a single sign-on to schedule announcements, background music, ads, and more for selected sites or zones. It's simple to set up and adjust zones, content, and schedules, without downtime. Furthermore, health monitoring provides immediate notifications if any part of the system isn't working. A no-cost version with a limited feature set is also available.

- > **Central control of thousands of sites**
- > **Multisite scheduling**
- > **System health monitoring**
- > **Customizable user permissions**
- > **Built-in secure remote access**



# AXIS Audio Manager Center

## System features

<b>Functionality</b>	<p>Standard:</p> <ul style="list-style-type: none"> <li>- Multisite management</li> <li>- User management with single sign-on</li> <li>- Role-based access rights for users and groups</li> <li>- Secure remote access</li> <li>- Health monitoring and notifications</li> </ul> <p>Premium:</p> <ul style="list-style-type: none"> <li>- Scheduling</li> <li>- Content management and distribution</li> </ul> <p>For more information, see <a href="https://axis.com/products/axis-audio-manager-center">axis.com/products/axis-audio-manager-center</a></p>
----------------------	---

<b>Licenses</b>	No license required for the standard feature set. Premium features require an annual subscription. For more information see <a href="https://axis.com/axis-subscription">axis.com/axis-subscription</a>
-----------------	---

## System requirements

<b>Supported devices</b>	<p>All local sites must be running on AXIS Audio Manager Edge. Leader devices:</p> <ul style="list-style-type: none"> <li>- Recommended: AXIS C1210-E, AXIS C1211-E, AXIS C1510, AXIS C1511, AXIS C1610-VE, AXIS C8110, AXIS C8210</li> </ul>
--------------------------	---

- Additional supported leader devices: AXIS C1310-E, AXIS C1410
  - Minimum required FW: 11.4
- Follower devices:
- Supported: All of the above Axis network audio products and AXIS C1004-E, AXIS C2005, AXIS C3003-E, AXIS C8033
  - Minimum required FW: 10.12

## Network

<b>Network function</b>	<p>All local sites require internet connection to the service hosted by Axis.</p> <p>Ports used:</p> <ul style="list-style-type: none"> <li>- Outbound, TCP: 80, 443, 8883</li> </ul>
-------------------------	---

## General

<b>Web browser</b>	Firefox, Google Chrome, Microsoft Edge, Safari
<b>Languages</b>	English, French, Spanish, German, Italian, Dutch, Polish, Brazilian Portuguese, Japanese, Korean, Russian, Traditional Chinese, Simplified Chinese
<b>Mobile access</b>	AXIS Audio Remote mobile app is available for iOS and Android and enables mobile access to control background music volume.
<b>Limitations</b>	Up to 200 speakers per site.