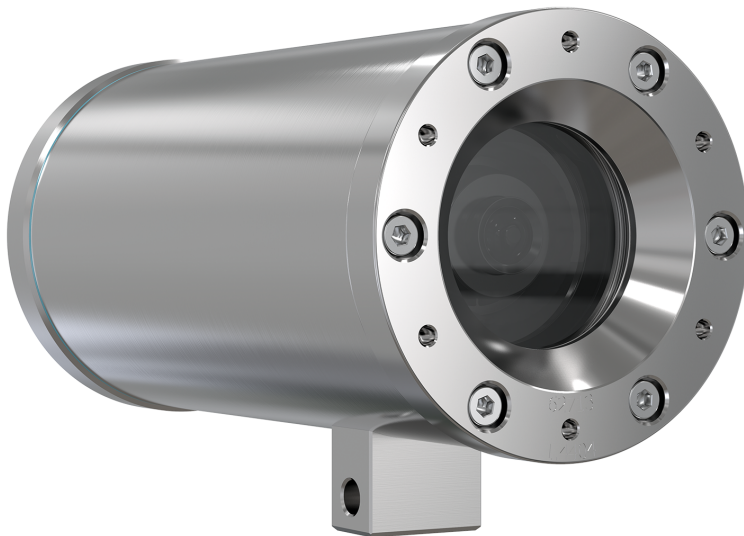


# ExCam XF M3016 Explosion-Protected Network Camera

Small form-factor for process monitoring in hazardous environments

ExCam XF M3016 comes enclosed in a stainless steel explosion-protected housing and is certified (ATEX/IECEX/EAC Ex/IA/PESO) for use in potentially combustible zones. This lightweight and robust fixed box camera features Wide Dynamic Range (WDR), a wide field-of-view and great 3 MP image quality at up to 30 fps. It offers easy one-person installation and thanks to its compact design, it easily fits wherever you need it. It's powered by Power over Ethernet (PoE) and includes a pre-connected 5 m (16 ft) non-armored cable. Furthermore, Axis Zipstream with support for H.264 and H.265 significantly lowers bandwidth and storage requirements.

- > **3 MP at 30 fps, wide field-of-view, and WDR**
- > **Lightweight and compact**
- > **Powered by PoE with non-armored cable**
- > **ATEX, IECEX, EAC Ex, IA, and PESO**
- > **Zones 1, 2, 21, 22; Groups IIC, IIIC**



# ExCam XF M3016 Explosion-Protected Network Camera

<b>Camera</b>		<b>Sustainability</b>	PVC free
<b>Image sensor</b>	Fixed focus, fixed iris 1/3" progressive scan RGB CMOS	<b>Memory</b>	512 MB RAM, 512 MB Flash
<b>Lens</b>	2.8 mm, F2.0 4:3 aspect ratio: Horizontal field of view: 69°, vertical field of view: 52° 16:9 aspect ratio: Horizontal field of view: 92°, vertical field of view: 52°	<b>Power</b>	Power over Ethernet (PoE) IEEE 802.3af/802.3at Type 1 Class 1, typical 2.9 W, max 3.8 W
<b>Minimum illumination</b>	0.4 lux at 50 IRE F2.0	<b>Connectors</b>	5 m (16 ft) shielded cable for network (Cat 6) with RJ45 10BASE-T/100BASE-TX PoE
<b>Shutter time</b>	1/32500 s to 1/5 s	<b>Storage</b>	Support for microSD/microSDHC/microSDXC card Support for SD card encryption Support for recording to network-attached storage (NAS) For SD card and NAS recommendations see <a href="http://axis.com">axis.com</a>
<b>Video</b>		<b>Operating conditions</b>	-5 °C to 40 °C (23 °F to 104 °F) Maximum temperature (intermittent): 50 °C (122 °F) Humidity 10-100% RH (condensing)
<b>Video compression</b>	H.264 (MPEG-4 Part 10/AVC) Main and High Profiles H.265 (MPEG-H Part 2/HEVC) Main Profile Motion JPEG	<b>Storage conditions</b>	-40 °C to 65 °C (-40 °F to 149 °F) Humidity 5-95% RH (non-condensing)
<b>Resolution</b>	2016x1512 to 320x240 (4:3) or 2304x1296 to 640x360 (16:9)	<b>Approvals</b>	EMC EN 55032 Class B, EN 61000-6-2 Safety IS 13252 pending Explosion EN/IEC/GOST/SANS 60079-0, EN/IEC/GOST/SANS 60079-1, EN/IEC/GOST/SANS 60079-31 Environment IEC 60068-2-1, IEC 60068-2-2, IEC 60068-2-6, IEC 60068-2-14, IEC 60068-2-27, IEC 60068-2-78, IEC/EN 60529 IP68 Network NIST SP500-267
<b>Frame rate</b>	25/30 fps with power line frequency 50/60 Hz	<b>Certifications</b>	Model key: T08-VA.1.2.K1.BOR-N.N-005.N-P-090 ATEX: II 2 G Ex db IIC T6 Gb, II 2 D Ex tb IIIC T80 °C Db Certificate: TÜV 18 ATEX 8218X IECEX: Ex db IIC T6 Gb, Ex tb IIIC T80 °C Db Certificate: TUR 18.0023X EAC Ex: 1Ex db IIC T6 Gb, Ex tb IIIC T80 °C Db Certificate: TC RU C-DE.AB61.B.00381/19 IA: Ex db IIC T6 Gb, Ex tb IIIC T80 °C Db Certificate: MASC MS/18-3256X PESO: Ex db IIC T6 Gb Certificate: P453640
<b>Video streaming</b>	Multiple, individually configurable streams in H.264, H.265 and Motion JPEG Axis Zipstream technology in H.264 and H.265 Controllable frame rate and bandwidth VBR/MBR H.264/H.265	<b>Dimensions</b>	179 x 79 x 96 mm (7.0 x 3.1 x 3.8 in)
<b>Multi-view streaming</b>	2 individually cropped out view areas in full frame rate streaming	<b>Weight</b>	2.7 kg (5.9 lb) including cable
<b>Image settings</b>	Compression, color, brightness, sharpness, contrast, local contrast, white balance, exposure control, text and image overlay, mirroring of images, privacy masks WDR: up to 100 dB depending on scene Rotation: 0°, 90°, 180°, 270° including Corridor Format	<b>Included accessories</b>	Installation guide, Windows® decoder 1-user license, AXIS Surveillance microSDXC Card 64 GB
<b>Network</b>		<b>Optional accessories</b>	Wall Mount ExCam XF M30, Pole Mount ExCam XF, EXTB-3 Junction Box ExCam, Non-armored cables ExCam, 10, 25, 95 m (33, 82, 312 ft), Armored cables ExCam 10, 25, 95 m (33, 82, 312 ft), Ex Connection Rail 4-port PoE PS 24, Ex Connection Rail 8-port PoE PS 24, Weathershield ExCam XF M30 For more accessories, see <a href="http://axis.com">axis.com</a>
<b>Security</b>	Password protection, IP address filtering, HTTPS <sup>a</sup> encryption, IEEE 802.1X (EAP-TLS) <sup>a</sup> network access control, digest authentication, user access log, centralized certificate management, brute force delay protection, signed firmware	<b>Video management software</b>	AXIS Companion, AXIS Camera Station, video management software from Axis Application Development Partners available at <a href="http://axis.com/vms">axis.com/vms</a>
<b>Supported protocols</b>	IPv4, IPv6 USGv6, HTTP, HTTPS <sup>a</sup> , SSL/TLS <sup>a</sup> , QoS Layer 3 DiffServ, FTP, SFTP, CIFS/SMB, SMTP, Bonjour, UPnP <sup>TM</sup> , SNMP v1/v2c/v3 (MIB-II), DNS, DynDNS, NTP, RTSP, RTP, TCP, UDP, IGMP, RTCP, ICMP, DHCP, ARP, SOCKS, SSH, LLDP	<b>Languages</b>	English, German, French, Spanish, Italian, Russian, Simplified Chinese, Japanese, Korean, Portuguese, Traditional Chinese
<b>System integration</b>		<b>Warranty</b>	Axis 3-year warranty and AXIS Extended Warranty option, see <a href="http://axis.com/warranty">axis.com/warranty</a>
<b>Application Programming Interface</b>	Open API for software integration, including VAPIX <sup>®</sup> and AXIS Camera Application Platform; specifications at <a href="http://axis.com">axis.com</a> AXIS Guardian with One-Click Connection ONVIF <sup>®</sup> Profile G, ONVIF <sup>®</sup> Profile S, and ONVIF <sup>®</sup> Profile T, specification at <a href="http://onvif.org">onvif.org</a>	a. This product includes software developed by the OpenSSL Project for use in the OpenSSL Toolkit. ( <a href="http://www.openssl.org">www.openssl.org</a> ), and cryptographic software written by Eric Young ( <a href="mailto:ey@cryptsoft.com">ey@cryptsoft.com</a> ).	
<b>Analytics</b>	Included AXIS Video Motion Detection, active tampering alarm Support for AXIS Camera Application Platform enabling installation of third-party applications, see <a href="http://axis.com/acap">axis.com/acap</a>	Environmental responsibility: <a href="http://axis.com/environmental-responsibility">axis.com/environmental-responsibility</a>	
<b>Event triggers</b>	Analytics, virtual inputs through API, edge storage events		
<b>Event actions</b>	Record video: SD card and network share Upload of images or video clips: FTP, SFTP, HTTP, HTTPS, network share, and email Pre- and post-alarm video or image buffering for recording or upload Notification: email, HTTP, HTTPS, TCP, and SNMP trap Overlay text		
<b>Data streaming</b>	Event data		
<b>Built-in installation aids</b>	Pixel counter		
<b>General</b>			
<b>Casing</b>	IP68-rated, EN 1.4404 (ASTM 316L) stainless steel casing for maximum corrosion protection Casing manufactured and certified by Samcon Prozesstechnik GmbH, <a href="http://www.samcon.eu">www.samcon.eu</a>		