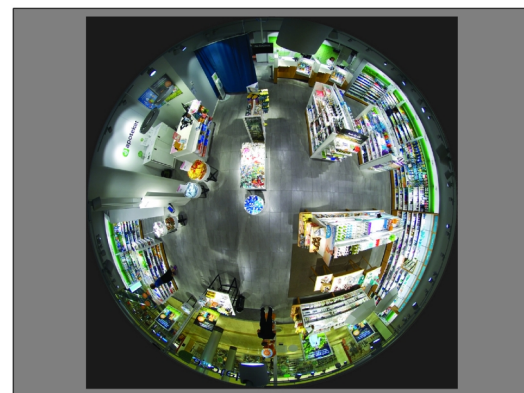


AXIS M3048-P Network Camera

12 MP mini dome with 360° panoramic view

AXIS M3048-P is an affordably priced fixed dome with a 12 MP sensor in an environment-friendly, discreet design. It offers 360° overview and dewarped views such as panorama, view area, corridor, corner and quad views with outstanding sharpness. HDMI support enables live streaming to an HDTV monitor for public viewing. Black, vandal-resistant and smoke-detector casings are available as accessories, and AXIS M3048-P is easily repaintable to blend in with any environment. Installation is quick with bayonet-fitted casing and easy cable connection. No manual focusing is needed since the camera comes factory-focused.

- > **Complete panoramic overview with outstanding sharpness**
- > **Quick installation with small and discreet design**
- > **Zipstream for reduced bandwidth and storage**
- > **HDMI support enables streaming to a monitor**
- > **70% recycled plastics and PVC-free design**



2880 x 2880
4000 x 3000

AXIS M3048-P Network Camera

Camera		Notification: email, HTTP, HTTPS, TCP and SNMP trap Overlay text
Image sensor	12 MP (4000x3000) 1/1.7" progressive scan RGB CMOS	Data streaming Event data
Lens	F2.8, Fixed iris, Fixed focus, 1.65 mm Horizontal field of view: 185° Vertical field of view: 185°	Built-in installation aids Pixel counter
Minimum illumination	0.35 lux at 50 IRE F2.8	General
Shutter time	1/25000 s to 1/2 s	Casing Aluminum and plastic casing, Encapsulated electronics Color: White NCS S 1002-B For repainting instructions of casing and impact on warranty, contact your Axis partner.
Camera angle adjustment	Rotation ±180°	Sustainability PVC free, 70% recycled plastics
Video		Memory 1024 MB RAM, 256 MB Flash
Video compression	H.264 (MPEG-4 Part 10/AVC) Baseline, Main and High Profiles Motion JPEG	Power Power over Ethernet (PoE) IEEE 802.3af/802.3at Type 1 Class 2 Typical 5.6 W, max 6.49 W
Resolution	360° overview: 2880x2880 to 480x480 Panorama: 2560x720 to 640x240 Double Panorama: 2560x1440 to 480x360 Quad view: 2560x1440 to 480x360 View area: 2048x1152 to 480x360 Corner left or right: 1920x720 to 640x240 Double Corner: 1920x1440 to 480x360 Corridor: 2560x1440 to 640x360	Connectors RJ45 10BASE-T/100BASE-TX PoE HDMI Type D ^b
Frame rate	360° overview only, up to 2880x2880: 30/25 fps @ 60Hz/50Hz Dewarped view in max resolution + 360° overview up to 2048x2048: 15/13 fps @ 60Hz/50Hz	Storage Support for microSD/microSDHC/microSDXC card Support for recording to dedicated network-attached storage (NAS) For SD card and NAS recommendations see www.axis.com
Video streaming	Multiple, individually configurable streams in H.264 and Motion JPEG Axis Zipstream technology in H.264 Controllable frame rate and bandwidth VBR/MBR H.264 HDMI	Operating conditions 0 °C to 40 °C (32 °F to 104 °F) Humidity 10–85% RH (non-condensing)
Multi-view streaming	360° overview. Dewarped panorama, corridor, corner and quad views. Two individually cropped out and dewarped view areas. The 360° overview can be streamed simultaneously with two view areas or one other dewarped view.	Storage conditions -40 °C to 65 °C (-40 °F to 149 °F)
HDMI output	HDMI 720p @ 50/60 fps (50/60 Hz)	Approvals EMC EN 55024, EN 55032 Class A, EN 61000-6-1, EN 61000-6-2, FCC Part 15 Subpart B Class A, ICES-003 Class A, VCCI Class A, RCM AS/NZS CISPR 22 Class A, KCC KN32 Class A, KN35 Safety IEC/EN/UL 62368-1 Environment IEC 60068-2-1, IEC 60068-2-2, IEC 60068-2-6, IEC 60068-2-14, IEC 60068-2-27, IEC 60068-2-78
Image settings	Compression, color, brightness, sharpness, contrast, white balance, exposure control, exposure zones, WDR – dynamic contrast, noise reduction, rotation: 0°, 180°, text and image overlay, privacy masks, mirroring of images	Dimensions Height: 46 mm (1.8 in) ø: 101 mm (4.0 in)
Pan/Tilt/Zoom	Digital PTZ of view areas, preset positions, guard tour, digital tilt of panorama, and quad views	Weight 240 g (0.53 lb)
Network		Included accessories Installation guide, Windows decoder 1-user license, drill hole template
Security	Password protection, IP address filtering, HTTPS ^a encryption, IEEE 802.1X ^a network access control, digest authentication, user access log, centralized certificate management	Optional accessories AXIS T94B02D Pendant Kit AXIS T94B05L Recessed Mount AXIS T94B01P Conduit Back Box AXIS T94B02M J-Box/Gang Box Plate AXIS M30 Casing B, Black AXIS M30 Vandal-resistant Casing A AXIS M30 Smoke Detector Casing A Axis Mounts AXIS Surveillance microSDXC™ Card For more accessories, see www.axis.com
Supported protocols	IPv4/v6, HTTP, HTTPS ^a , SSL/TLS ^a , QoS Layer 3 DiffServ, FTP, SFTP, CIFS/SMB, SMTP, Bonjour, UPnP™, SNMP v1/v2c/v3 (MIB-II), DNS, DynDNS, NTP, RTSP, RTP, TCP, UDP, IGMP, RTCP, ICMP, DHCP, ARP, SOCKS, SSH, HDMI 1.4b	Video management software AXIS Companion, AXIS Camera Station, video management software from Axis' Application Development Partners available on www.axis.com/support/downloads AXIS Companion available on www.axiscompanion.com/vms , AXIS Video Hosting System (AVHS)
System integration		Languages English, German, French, Spanish, Italian, Russian, Simplified Chinese, Japanese, Korean, Portuguese, Traditional Chinese
Application Programming Interface	Open API for software integration, including VAPIX [®] and AXIS Camera Application Platform; specifications at www.axis.com AXIS Video Hosting System (AVHS) with One-Click Connection ONVIF [®] Profiles S and G, specifications at www.onvif.org	Warranty Axis 3-year warranty and AXIS Extended Warranty option, see www.axis.com/warranty
Analytics	Included AXIS Video Motion Detection, Active Tampering Alarm Support for AXIS Camera Application Platform enabling installation of third-party applications, see www.axis.com/acap	
Event triggers	Analytics, edge storage events, virtual inputs through API	
Event actions	Record video: SD card and network share Upload of images or video clips: FTP, SFTP, HTTP, HTTPS, network share and email Pre- and post-alarm video or image buffering for recording or upload	

- a. This product includes software developed by the OpenSSL Project for use in the OpenSSL Toolkit. (www.openssl.org), and cryptographic software written by Eric Young (eyay@cryptsoft.com).
- b. Make sure that the cable has a slim connector plug

Environmental responsibility:

www.axis.com/environmental-responsibility