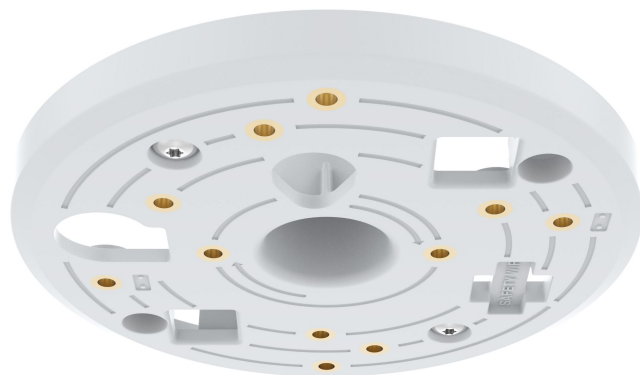


## AXIS T91A33

### *Flexible mount for lighting tracks*

AXIS T91A33 Lighting Track Mount is a unique accessory designed for mounting a wide range of Axis cameras and stands on lighting track systems. With no need for drilling, alterations to existing track systems, or running cables inside walls or ceilings, this Axis accessory helps to save time and money during installation. Furthermore, benefit from the flexibility to reposition cameras along the track whenever needed. AXIS T91A33 is compatible with a broad range of universal 3-circuit lighting track systems and common linear trunking systems. It is available in white and black to easily blend in with the lighting track system.

- > **Quick and flexible installation - no drilling or alterations**
- > **Compatible with universal 3-circuit lighting track systems**
- > **Compatible with selected linear trunking systems**
- > **Perfect for retail environment**
- > **Available in white and black**



## AXIS T91A33

<b>Models</b>	AXIS T91A33 Lighting Track Mount White AXIS T91A33 Lighting Track Mount Black	AXIS M3024-LVE, AXIS M3025-VE, AXIS M3026-VE, AXIS M3027-PVE, AXIS M3037-PVE
<b>General</b>		
<b>Mounting</b>	<b>Compatible lighting track systems<sup>a</sup>:</b> Universal 3-circuit lighting track systems, for example: Nordic Aluminium GlobalTrac, Oktalite Power track, Eutrac, Zumtobel Linear trunking systems, for example: Zumtobel Tecton, Oktalite/Trilux C-line, Oktalite/Trilux E-line, Philips Maxos Fusion	<b>Maximum load</b> 1200 g (2.6 lb) <b>Environment</b> Indoor <b>Casing</b> Plastic Color: white NCS S 1002-B, black NCS S 9000-N <b>Compliance</b> RoHS, WEEE, CE, REACH <b>Sustainability</b> PVC free <b>Operating conditions</b> -10 °C to 40 °C (14 °F to 104 °F) Humidity 15–85% RH (non-condensing) <b>Storage conditions</b> -40 °C to 70 °C (-40 °F to 158 °F)
<b>Supported products</b>	<b>Directly compatible with:</b> AXIS M3044-V, AXIS M3045-V, AXIS M3045-WV, AXIS M3046-V, AXIS M3047-P, AXIS M3048-P, AXIS M3057-PLVE, AXIS M3058-PLVE, AXIS M20 Series, AXIS M31 Series, AXIS P32 Series, AXIS Companion Dome V, AXIS Companion Dome WV, AXIS Companion 360, AXIS Companion Eye L, AXIS Companion Eye LVE <b>AXIS T91A10 Mounting Kit, required for:</b> AXIS M1045-LW, AXIS M1065-L, AXIS M1065-LW, AXIS F8205/F8215 with AXIS F1005-E, AXIS F8205/F8215 with AXIS F1015, AXIS F8205/F8215 with AXIS P1280-E, AXIS T8331, AXIS T8331-E <b>AXIS T91A11 Stand White, required for:</b> AXIS M10 Series, AXIS M11 Series, AXIS Companion Cube L, AXIS Companion Cube LW <b>AXIS T91B21 Stand Black/White, required for:</b> AXIS M50 Series (excluding AXIS M50-V cameras), AXIS P13 Series, AXIS Q1615 Mk II, AXIS Q1635 <b>Stand 7 cm, required for:</b> AXIS M1025 <b>AXIS T94F01P Conduit Back Box, required for:</b>	<b>Approvals</b> Safety IEC/EN 60950-1 <b>Environment</b> IEC 60068-2-1, IEC 60068-2-2, IEC 60068-2-6, IEC 60068-2-14, IEC 60068-2-27, IEC 62262 <b>Dimensions</b> Height: 27.5 mm (1.1 in) ø 111.5 mm (4.4 in) <b>Weight</b> 58 g (0.13 lb) <b>Included accessories</b> Installation guide, mounting screws <b>Warranty</b> Axis 3-year warranty, see <a href="http://www.axis.com/warranty">www.axis.com/warranty</a>

a. If a lighting track is not listed, please cross-check track dimensions with AXIS T91A33 dimensions available on [axis.com](http://axis.com). Also note that track systems names may differ between countries.

**Environmental responsibility:**  
[www.axis.com/environmental-responsibility](http://www.axis.com/environmental-responsibility)