

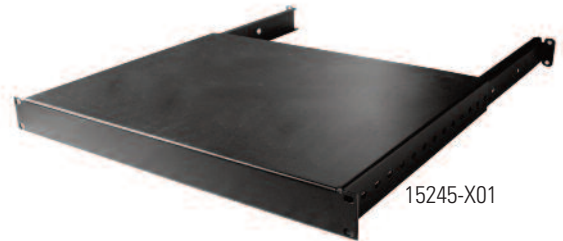
Product Cut Sheet

SOLID AND VENTED SHELVES

Supports heavy peripheral equipment. 1U x 19"W steel, shelf with adjustable depth rear mounting brackets with solid or vented support surface; 17.68"W (449.1 mm) . Supports 200 lb (90.7 kg) of equipment; includes assembly hardware.

| Shelves | | Shelf Depth in (mm) | Mounting Channel Depth in (mm) | Shipping Weight lb (kg) |
|-----------|-----------|---------------------|--------------------------------|-------------------------|
| Solid | Vented | | | |
| 15245-X01 | 15255-X01 | 13.84 (351.5) | 15.75 to 21.65 (400 to 550) | 10 (4.5) |
| 15245-X02 | 15255-X02 | 20.73 (526.5) | 22.64 to 28.54 (575 to 725) | 12 (5.4) |
| 15245-X03 | 15255-X03 | 27.62 (701.6) | 29.53 to 35.43 (750 to 900) | 15 (6.8) |
| 15245-X04 | 15255-X04 | 34.51 (876.6) | 36.42 to 42.32 (925 to 1075) | 18 (8.2) |

X=Color; 1=Gray, 2=Computer Beige, 7=Black, E=Glacier White



800-834-4969 in U.S. & Canada • www.chatsworth.com



©2013 Chatsworth Products, Inc. All rights reserved. CPI, CPI Passive Cooling, GlobalFrame, MegaFrame, Saf-T-Grip, Seismic Frame, SlimFrame, TeraFrame, Cube-IT Plus, Evolution, OnTrac, Velocity and QuadraRack are federally registered trademarks of Chatsworth Products. eConnect and Simply Efficient are trademarks of Chatsworth Products. All other trademarks belong to their respective companies. 6/13