

Station of RG-AirMetro Series Wireless Bridges for PTMP

DATASHEET

[Explore More](#)



Highlights

- High Performance with Cost-Effectiveness
- One-Touch Pairing
- Easy Site Survey Tool
- Alignment Tool
- Spectrum Scan and Link Optimization
- All in One Cloud Management

Highlight Features



RG-AirMetro Series Wireless Bridges

After pairing, the bridges support:

10 km

Up to 10 km
Wireless Transmission

32 PTMP

Up to 32 PTMP
Links



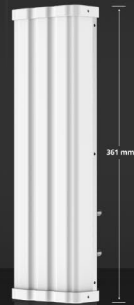
Easy Site Survey
Tool



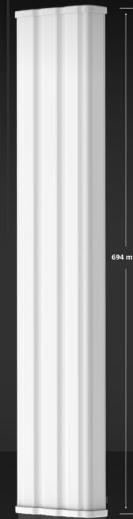
All-in-One Cloud
Management



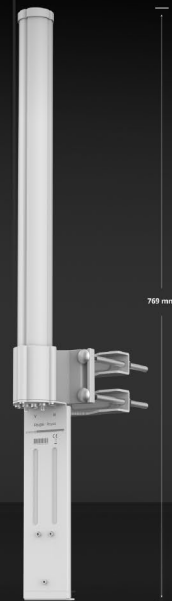
RG-AirMetro550G-B



RG-ANT16S-120



RG-ANT20S-90



RG-ANT13-360

/ Highlight Features

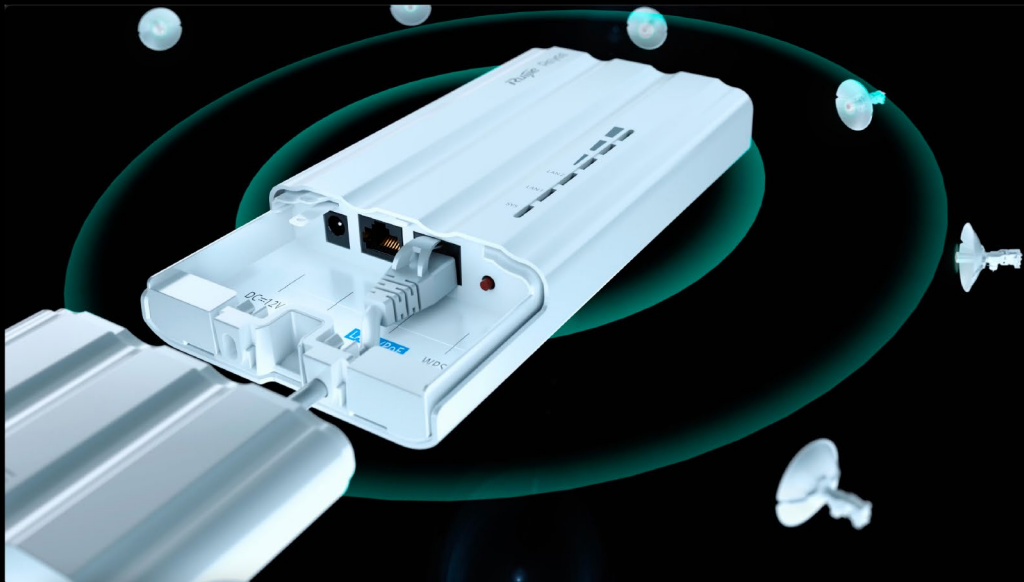
A Perfect Match for Different Devices and Scenarios



SMA
Connectors

Fast Pairing

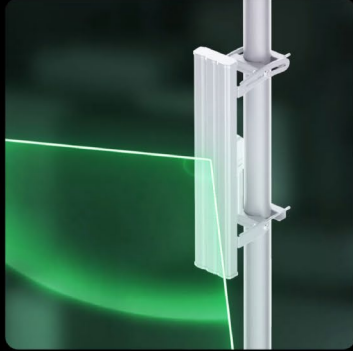
One-Touch Pairing All in 30 sec



Highlight Features

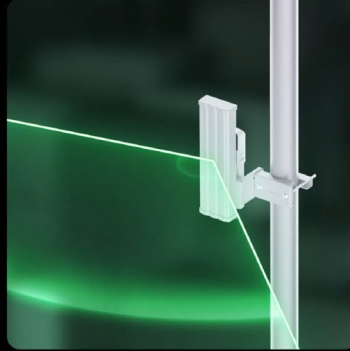
Antennas

Triple Devices, Beyond Triple Choices



RG-ANT20S-90

5 GHz, 20 dBi
H: 90°, V: 7°
10 km



RG-ANT16S-120

5 GHz, 16 dBi
H: 120°, V: 10°
5 km



RG-ANT13-360

5 GHz, 13 dBi
H: 360°, V: 7°
2 km

Still Stable

Fearless of Harsh Environment

IP55

IP55
Weatherproof



220.32 km/h
(137 mph)
Wind Survivability

6kV

6 kV
Surge Protection

24kV

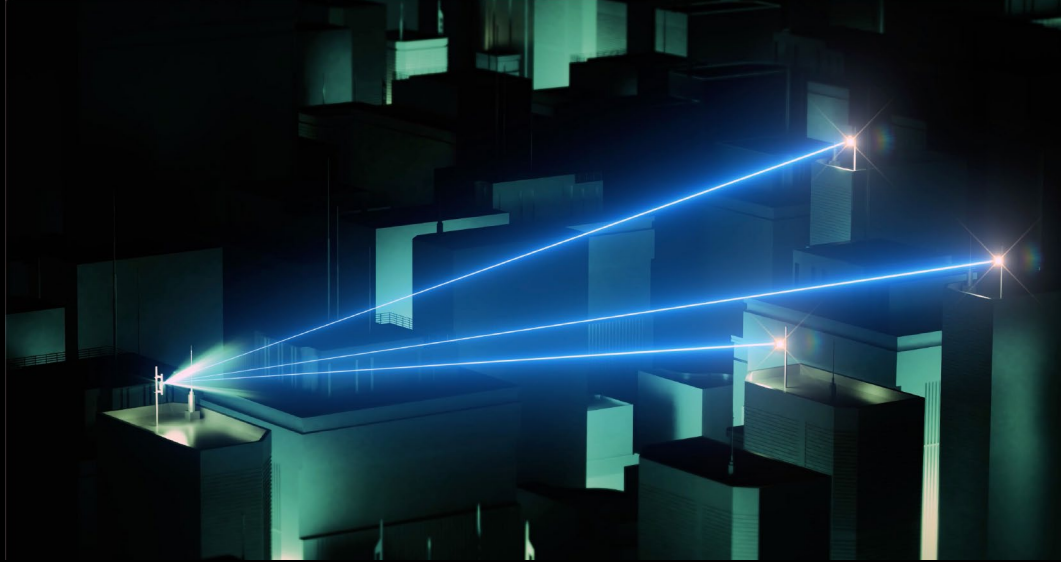
24 kV
Contact/ Air
ESD



Highlight Features

PTMP

Up to 32 PTMP Links



WISP

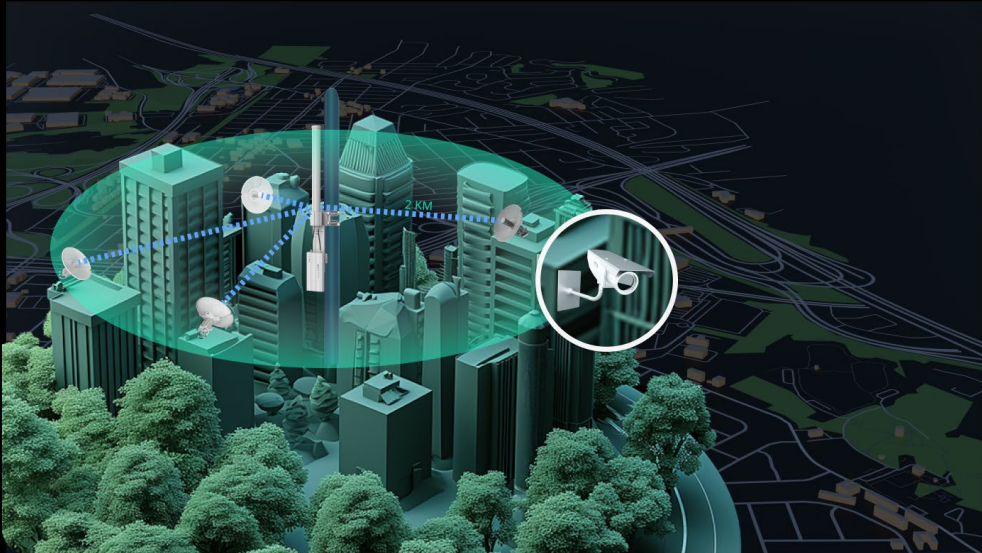
Extensive Transmission Without Fiber Connections



Highlight Features

CCTV

Affordable Excellence and Smooth Surveillance



AI Heatmap for Bridge

Your Real Outdoor Adventure Companion

The image displays the Ruijie Cloud interface for the AI Heatmap for Bridge. The interface is divided into several sections:

- Product List:** A table with columns for Brand, Product Type, Product Model, Product Photo, and Description. The table lists three Ruijie Bridge products.
- Export Format:** A section for exporting data, with options for Export, PDF, and Image.
- Mobile App:** A smartphone displaying the Ruijie Reyee App interface, showing a map with a heatmap overlay and various navigation controls.

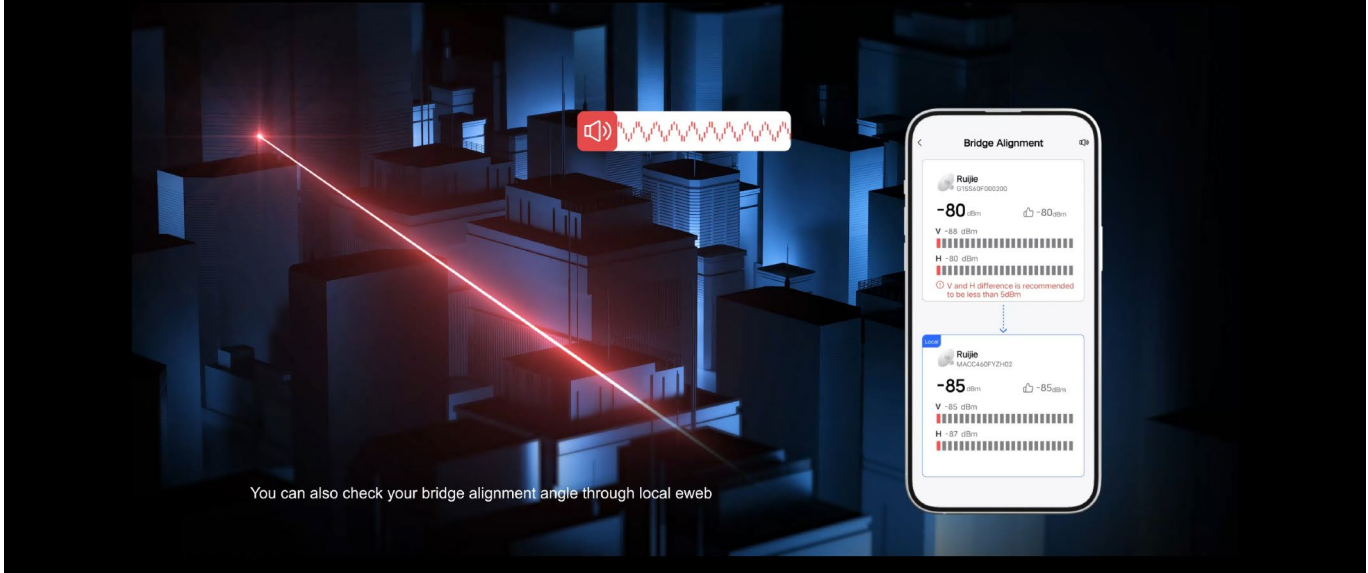
Brand	Product Type	Product Model	Product Photo	Description
Ruijie	Bridge	RG-ANT185-120		120° 7.5GHz dual-stream 2x2 MIMO-pole antenna
Ruijie	Bridge	RG-AirMesh-6000		Wireless bridge CPE, 802.11ac/11n, supports 11ac power of 19dBm (gain up to 23dB)
Ruijie	Bridge	RG-AirMesh-5500-B		Wireless bridge base station, 802.11ac/11n, IP55

Available on both Ruijie Cloud and Ruijie Reyee App

Highlight Features

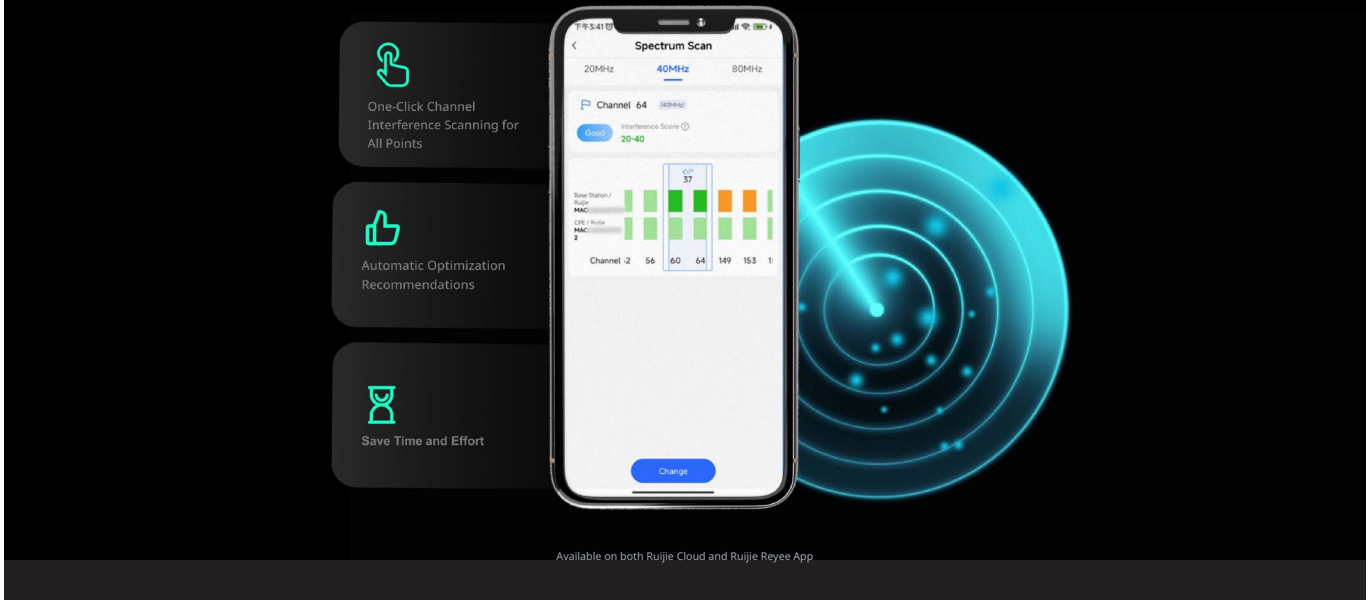
Alignment Tool

Your Big-Voice, Time-Saver Guide



Spectrum Scan and Link Optimization

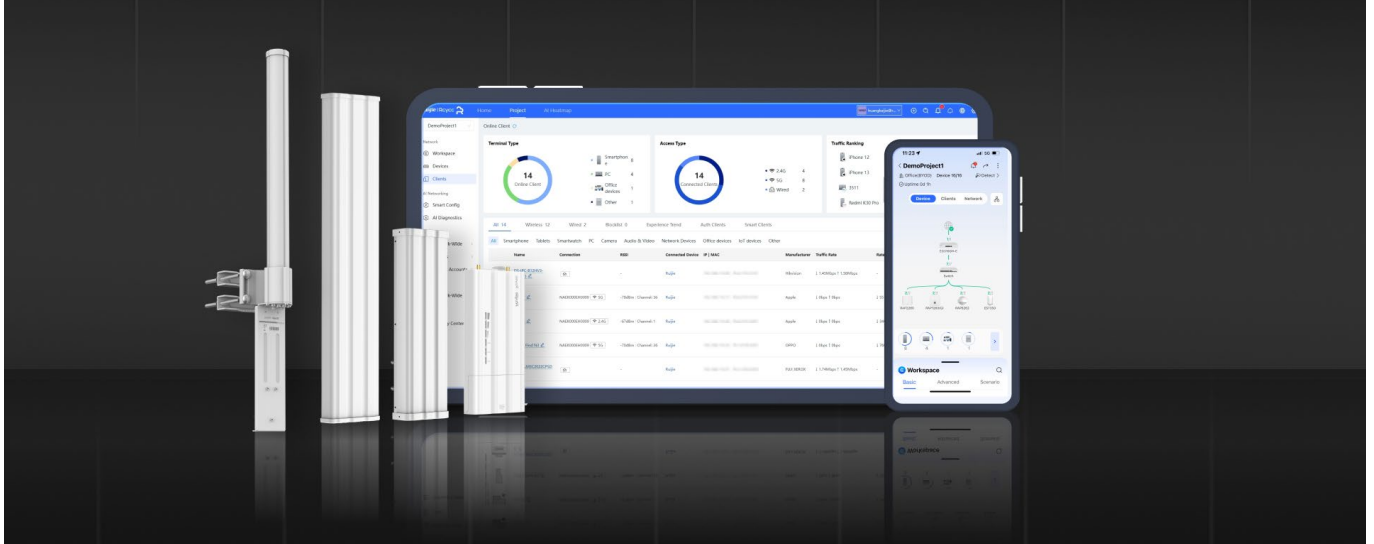
Thumbs-Up Guide



Highlight Features

Cloud: Make Your Business Easy

- Quick Setup
- All-in-one Cloud
- Monitoring based on Real, Complete Topology
- Identifying Issues by Auto-Alarm



Specifications

Model	RG-AirMetro550G-B	RG-ANT13-360	RG-ANT16S-120	RG-ANT20S-90
Hardware Features				
Radio Design	5 GHz dual-stream 2.4 GHz single-stream		N/A	
2.4 GHz Band	Yes	No	No	No
5 GHz Band	Yes	No	No	No
Protocol and Standard	5 GHz: 802.11ac/n/a 2.4 GHz: 802.11b/g/n	5.15 to 5.85 GHz	5.15 to 5.85 GHz	5.15 to 5.85 GHz
Wi-Fi 4/5/6/7	Wi-Fi 5			
Spatial Streams	5 GHz dual-stream, 2x2 MIMO 2.4 GHz single-stream			
2.4G Channel Width	Auto/20/40 MHz			
5G Channel Width	Auto/20/40/80 MHz			
Receiver Sensitivity	11a: -89 dBm (6 Mbps), -80 dBm (24Mbps), -76 dBm (36 Mbps), -71 dBm (54 Mbps); 11n: -83 dBm@MCS0, -65 dBm@MCS7, -83 dBm@MCS8, -65 dBm@MCS15; 11ac: -86 dBm (MCS0), -63 dBm (MCS9)		N/A	
Nominal Receive Sensitivity @20 MHz Channel	-91dBm (MCS0) TO -57dBm (MCS9)			
Nominal Receive Sensitivity @40 MHz Channel	-83dBm (MCS0) TO -57dBm (MCS9)			
Nominal Receive Sensitivity @80 MHz Channel	-76dBm (MCS0) TO -51dBm (MCS9)			

Model	RG-AirMetro550G-B	RG-ANT13-360	RG-ANT16S-120	RG-ANT20S-90
Modulation Levels (Adaptive)	MCS0(BPSK)to MCS9 (256QAM)			
Wi-Fi Protocols (2.4 GHz)	Wi-Fi 4 (IEEE 802.11b/g/n)			
Wi-Fi Protocols (5 GHz)	Wi-Fi 5 (IEEE 802.11ac)			
Wireless Data Rate	867 Mbps			
Wireless Data Rate (5 GHz)	867 Mbps			
Frequency Bands	2.4 GHz: 802.11b/g/n: 2.4000 GHz to 2.483 GHz 5 GHz: 802.11a/n/ac: 5.150 GHz to 5.350 GHz, 5.470 GHz to 5.725 GHz, 5.725 GHz to 5.850 GHz Note: Country-specific restrictions apply.		N/A	
2.4 GHz Max. Transmit Power	20 dBm			
5 GHz Max. Transmit Power	26 dBm			
Surge Protection	Common mode: ±6 kV Differential mode: ±2 kV			
Dimensions (W x D x H)	200 mm x 98.5 mm x 29 mm (7.87 in. x 3.88 in. x 1.14 in.) (without bracket)	521 mm x 120 mm x 82 mm (20.51 in. x 4.72 in. x 3.22 in.) (excluding mounting bracket)	361 mm x 110 mm x 48.5 mm (14.21 in. x 4.33 in. x 1.91 in.) (excluding mounting bracket)	694 mm x 139.9 mm x 48.9 mm (27.32 in. x 5.51 in. x 1.93 in.) (excluding mounting bracket)
Weight	0.68 kg	2.35 kg	2.5 kg	4.5 kg
Number of Fixed LAN Ports	2		N/A	
Max. LAN Port Rate	1000 Mbps	No	No	No
Number of 10/100/1000BASE-T Ports	2			
Reset	Yes		N/A	
Status LED	Yes			

Model	RG-AirMetro550G-B	RG-ANT13-360	RG-ANT16S-120	RG-ANT20S-90			
Power Supply	24 V passive PoE/12 V DC	N/A					
Local Power Supply	Yes						
PoE Out	No						
Supported PoE Standards	No Note: Passive PoE input.						
Antenna Shape	N/A	Cylindrical antenna	Panel antenna	Panel antenna			
Antenna Type	Built-in antenna (horizontal/vertical): 90°/7°, 120°/10°, 360°/7°	N/A					
Hardware Button	1 x reset button						
DC Power Connector Size	Inner Diameter: 2.10 ± 0.05 mm (0.08 ± 0.002 in.) Outer Diameter: 5.50 ± 0.05 mm (0.22 ± 0.002 in.) Depth: 9 mm (0.35 in.)						
DC Voltage/Current	12 V/1 A						
LEDs	1 x system LED 2 x port LEDs 3 x signal strength LEDs	N/A					
2.4 GHz Antenna Gain	3 dBi				No	No	No
5 GHz Antenna Gain	No				13 dBi	16 dBi	20 dBi
Power Consumption	<12W				N/A		
IP Rating	IP55	IP55	IP55	IP55			
Color	Standard: Elegant white	Standard: Elegant white	Standard: Elegant white	Standard: Elegant white			
Operating Temperature	Operating temperature: -30°C to +65°C (-22°F to +149°F) (-40°C to +80°C [-40°F to +176°F] in publicity materials)	Operating temperature: -40°C to +80°C (-40°F to +176°F)	Operating temperature: -40°C to +80°C (-40°F to +176°F)	Operating temperature: -40°C to +80°C (-40°F to +176°F)			
Storage Temperature	Storage temperature: -40°C to +85°C (-22°F to +185°F)	Storage temperature: -40°C to +85°C (-40°F to +185°F)	Storage temperature: -40°C to +85°C (-40°F to +185°F)	Storage temperature: -40°C to +85°C (-40°F to +185°F)			

Model	RG-AirMetro550G-B	RG-ANT13-360	RG-ANT16S-120	RG-ANT20S-90
Operating Humidity	Operating humidity: 5% to 95% RH (non-condensing)	Operating humidity: 5%-95% (non-condensing)	Operating humidity: 5%-95% (non-condensing)	Operating humidity: 5%-95% (non-condensing)
Storage Humidity	Storage humidity: 5% to 95% RH (non-condensing)	Storage humidity: 5%-95% (non-condensing)	Storage humidity: 5%-95% (non-condensing)	Storage humidity: 5%-95% (non-condensing)
MTBF	> 400000 hours	> 400000 hours	> 400000 hours	> 400000 hours
Working Distance	15 km	2 km	5 km	10 km
Bridging Performance	200 Mbps/1 km (HT40) 180 Mbps/3 km (HT40) 100 Mbps/5 km (HT40) (Compared with competing products)			
RSSI (dBm)	-60/1 km -68/3 km -75/5 km (Compared with competing products; antenna gain 13 dBi or higher)			
Throughput & Camera Limits: 3 MP	35/1 km 30/3 km 16/5 km			
Throughput & Camera Limits: 4 to 5 MP	20/1 km 16/3 km 10/5 km			
Throughput & Camera Limits: 6 to 7 MP	15/1 km 12/3 km 6/5 km			
Throughput & Camera Limits: 7 to 8 MP	10/1 km 8/3 km 5/5 km			
Management Radio	2.412G~2.472GHz			
Number of PtMP Links	32			
ESD Protection	Tolerance:±24 k Contact/ Air			

Model	RG-AirMetro550G-B	RG-ANT13-360	RG-ANT16S-120	RG-ANT20S-90
Certification	CE	N/A		
Software Features				
Operating Mode	Base Station/CPE			
Channel Spacing	20 MHz			
TDMA	Fixed Mode/Flexible Mode			
WLAN Security	WPA2-PSK			
Management SSID	@Ruijie-bxxxx			
SSID Hiding	Yes			
Spectrum Scan	Yes			
Antenna Alignment	Yes			
One-Touch Pairing	Yes			
WMM	Yes			
Storm Control	Yes			
VLAN Packet Transmit	Yes			
DHCP Server	Yes			
DHCP Client	Yes			N/A
Network Diagnostics	Ping/TraceRoute/Dns			
Time & Date	Yes			
Firmware Upgrade	Yes			
Backup/Restore	Yes			
Cloud Management	Yes			
Power Configuration	Yes			
Country/Region Code	Yes			
Remote Restart	Yes			
SON	Self-organizing Networking with Bridges			
SNMP	Yes			
Link Aggregation	No			
Throughput & Camera Limits	Reference performance recommendation table			

Model	RG-AirMetro550G-B	RG-ANT13-360	RG-ANT16S-120	RG-ANT20S-90
Ping	Yes			
Traceroute	Yes		N/A	
AI Heatmap	Yes			

\

Package Contents

Model	RG-AirMetro550G-B	RG-ANT13-360	RG-ANT16S-120	RG-ANT20S-90
Wireless Bridge/Antenna	1	1	1	1
PoE Injector	1	N/A	N/A	N/A
DC Power Adapter	0	0	0	0
Mounting Bracket	0	N/A	N/A	N/A
Gross Weight	0.68Kg	2.35Kg	2.5Kg	4.5Kg
Package Dimensions (W x D x H)	200 mm x 98.5 mm x 29 mm (7.87 in. x 3.88 in. x 1.14 in.) (without bracket)	905*155*115 mm	430*170*150mm	750*195*165mm

Ruijie | Reyce

 **Redefine your easy network**

Copyright ©2000-2024 Ruijie Networks Co., Ltd. All rights reserved.

No part of this document may be reproduced or transmitted in any form or any means without prior written consent of Ruijie Networks Co., Ltd.

Notice

This content is applicable only to regions outside the China mainland. Ruijie Networks Co., Ltd. reserves the right to interpret this content.

The information contained herein is subject to change without notice. Nothing herein should be construed as constituting an additional warranty. Ruijie Networks Co., Ltd. shall not be liable for technical or editorial errors or omissions contained herein.



Ruijie Networks Co., Ltd.

Official Website: <https://Reyce.Ruijie.com>