

BioEntry R2

Compact Fingerprint Reader



| BioEntry R2 | Suprema BioEntry R2 is a compact fingerprint reader exclusively designed for centralized access control systems. Packed in a slim, million-type design, BioEntry R2 provides high-definition fingerprint image capture, minutiae extraction as well as dual-frequency multi RF card reading capability. Combined with Suprema's intelligent biometric controller, the CoreStation, BioEntry R2 completes biometrics-driven access control system with enhanced simplicity and level of security of centralized system topology.

BioEntry R2

Compact Fingerprint Reader

Features



Multi RFID card reading

- LF(125kHz), HF(13.56MHz) dual-band
- Reads all primary card types (EM, MIFARE, MIFARE Plus, DESFire/EV1, FeliCa, NFC)



Mobile Card reading

- Support NFC mobile card with BioStar 2 Mobile App



Field-proven fingerprint technology

- Latest Suprema fingerprint algorithm
- High-precision OP5 optical sensor



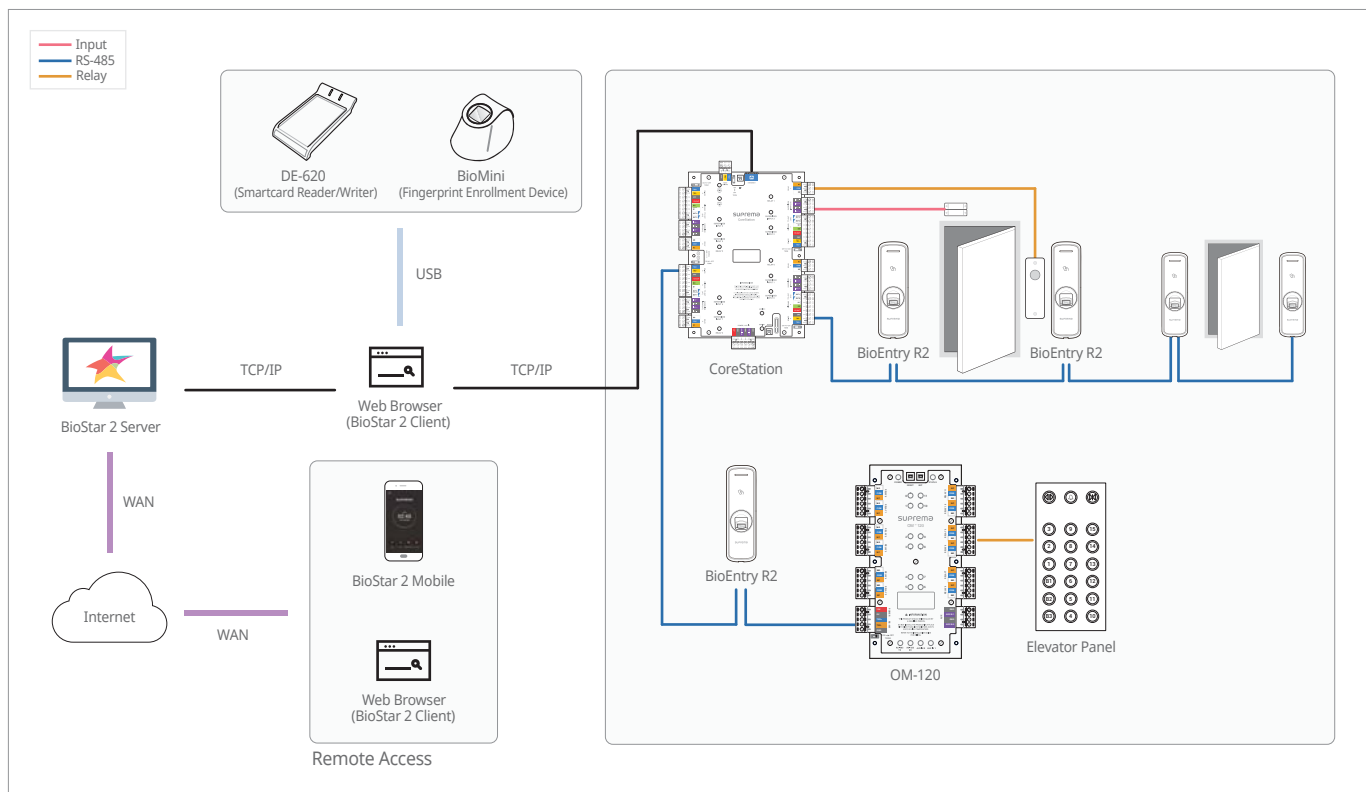
Standardized communication

- Open Supervised Device Protocol (OSDP)

Specifications

Biometric	Fingerprint
Sensor Type	Optical Sensor (OP6)
Template	SUPREMA / ISO 19794-2 / ANSI 378
Extractor / Matcher	MINEX certified and compliant
RF Option	125kHz EM & 13.56MHz MIFARE, MIFARE Plus, DESFire/EV1, FeliCa, NFC
CPU	1.0 GHz
Memory	32MB Flash + 32MB RAM
LED	Multi-Color
Sound	Multi-tone Buzzer
RS-485	1ch Slave, OSDP V2.1.6
Tamper	Supported
Power	DC 12V
Operating Temperature	-20°C ~ 50°C
Operating Humidity	0% ~ 80%, non-condensing
Dimensions (WxHxD, mm)	50 x 164 x 37.5
Weight	158g
Certificates	CE, FCC, KC, RoHS, REACH, WEEE

System Configurations



suprema
BIOMETRICS & SECURITY

Suprema Inc.

17F Parkview Tower, 248, Jeongjail-ro, Bundang-gu, Seongnam-si, Gyeonggi-do, 13554, Rep. of KOREA

Tel: +82 31 783 4502 | Fax: +82 31 783 4503 | Inquiry: sales@supremainc.com | www.supremainc.com

©2017 Suprema Inc. Suprema and identifying product names and numbers herein are registered trademarks of Suprema, Inc. All non-Suprema brands and product names are trademarks or registered trademarks of their respective companies. Product appearance, build status and/or specifications are subject to change without notice.
[AHL-BER2-171023-02-EN]