

# BioLite N2

Outdoor IP Fingerprint Terminal



**BioLite N2** Suprema's 2nd generation outdoor fingerprint terminal that offers comprehensive access control and time attendance features based on Suprema's latest biometric technology and security platform. BioLite N2 provides class-leading performance and security by featuring Suprema's latest fingerprint algorithm coupled with the world's best fingerprint sensor. Packed in a rugged IP67 housing, BioLite N2 brings added flexibility in system design with its multi-class RFID reading technology.

# BioLite N2

## Outdoor IP Fingerprint Terminal

### Features



- Best-in-class Performance**
- Latest Suprema fingerprint algorithm
  - Powerful 1.2 GHz CPU



- Multi RFID Card Reading**
- LF(125kHz), HF(13.56MHz) dual band
  - Reads all card types including Mobile Card (NFC and BLE)



- Advanced Accuracy & Security**
- High-precision OP6 optical sensor



- IP67 Certified Dust & Water Protection**
- Ideal for harsh environment and outdoor installation



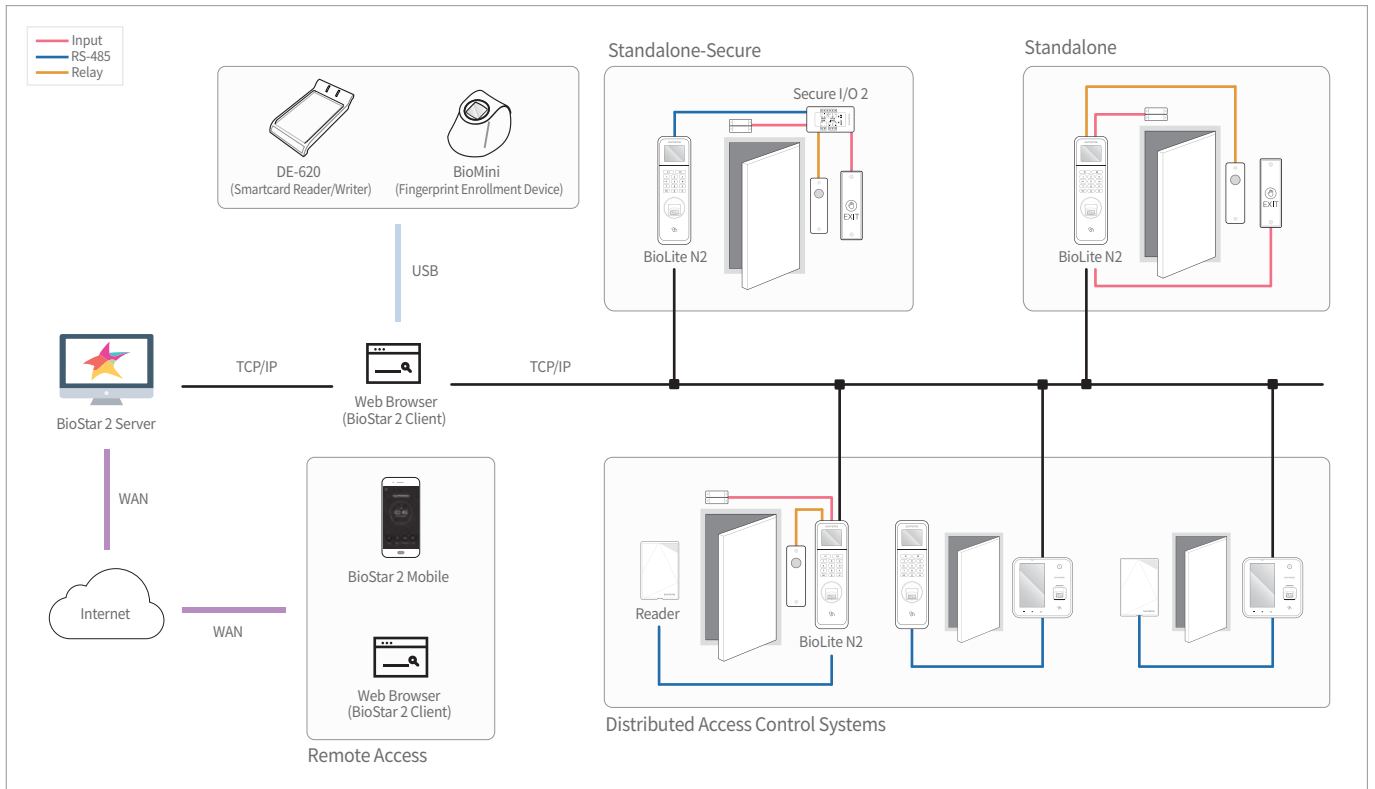
- Full Time Attendance Features**
- Colour LCD with Keypad for time attendance functionality

### Specifications

Biometric		Fingerprint	
Sensor Type		Optical Sensor (OP6)	
Template		SUPREMA / ISO 19794-2 / ANSI 378	
Extractor / Matcher		MINEX certified and compliant	
RF Option		BLN2-ODB	BLN2-OAB
		125kHz EM & 13.56MHz MIFARE, MIFARE Plus, DESFire/EV1 & 2.4GHz BLE	125kHz EM, HID Prox & 13.56MHz MIFARE, MIFARE Plus, DESFire/EV1, FeliCa, iCLASS SE/SR, NFC & 2.4GHz BLE
CPU		1.2 GHz	
Memory		4GB Flash + 64MB RAM	
Max. User		10,000	
Max. Template		20,000*	
Max. Logs		1,000,000	
LCD		1.77" colour LCD	
Sound		16-bit Hi-Fi	
Ethernet		10/100 Mbps, auto MDI/MDI-X	
RS-485		1ch Host or Slave (Selectable)	
Wiegand		1ch Input or Output (Selectable)	
TTL		2ch Input	
Relay		1 Relay	
Ingress Protection		IP67	
Tamper		Supported	
Power		DC 12V	
Operating Temperature		-20°C ~ 50 °C	
Operating Humidity		0% ~ 80%, non-condensing	
Dimensions (WxHxD,mm)		58 x 190 x 44	
Certificates		CE, FCC, KC, RoHS, REACH, WEEE	

\* Two templates per finger

### System Configurations



### Suprema - AFRICA

108 Eleventh Street, Parkmore, Sandton - SOUTH AFRICA

Tel: +27 11 787 3894 | +27 86 552 0819 | enquiry@suprema.co.za | www.suprema.co.za

©2018 Suprema Inc. Suprema and identifying product names and numbers herein are registered trademarks of Suprema, Inc. All non-Suprema brands and product names are trademarks or registered trademarks of their respective companies. Product appearance, build status and/or specifications are subject to change without notice. [AHL-BLN2-180403-04-EN]