

Wireless upload of FlexScan FS300 results for remote reporting using TRM 3.0

On Android Device **1** Enable Bluetooth

From Settings, go to Bluetooth Enable Bluetooth Make your mobile device visible

On FS300 **2** Enable Bluetooth and initiate pairing

Go to Settings Tap Bluetooth Enable Bluetooth - ; Note FS300 name

On FS300 **2** (continue): initiate pairing

Initiate pairing Scan for device

3 Pair FS300 to Android device with FlexScan App installed

On FS300 On FlexScan App On FS300

Tap your mobile device to select it Confirm passkey Tap Done

On FS300 **4** Verify paired Android added & selected in 'Previously Connected'

Go Back to Bluetooth screen Display Previously connected Verify your device added to 'Previously Connected' list and selected (star is filled)

On Android Device **5** Launch App

Launch FlexScan App

On FlexScan App **6** Connect FlexScan App to FS300 and log in to aeRosLink

Tap Bluetooth Tap on your FS300 name to connect Note FS300 status -> 'connected' Tap Back Arrow Tap Wifi Log in to aeRosLink All set!

On FS300

Press Home to return to Home screen; Proceed to Step 7

Note: If pairing fails, repeat steps 1 to 6.

7 Auto Save & Send OR manually select and transfer test results from FS300 through FlexScan App to aeRosLink

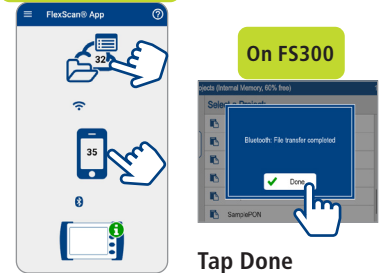
On FS300 Choice I: Enable Auto Save & Send for subsequent tests to auto-transfer results to aeRosLink

Enabled Auto Save & Send. As subsequent tests complete, results are automatically sent to paired device.



Go to Projects Navigate and tap test result Tap Menu Tap Save As Enable Auto Save/Send

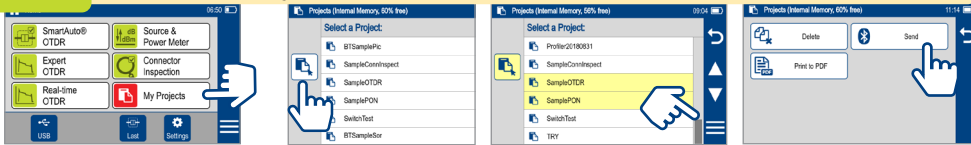
On FlexScan App



Tap Done

App indicates number of transferred files

On FS300 Choice II: Manually select and transfer test results - file(s) or folder(s) to aeRosLink



Display Projects

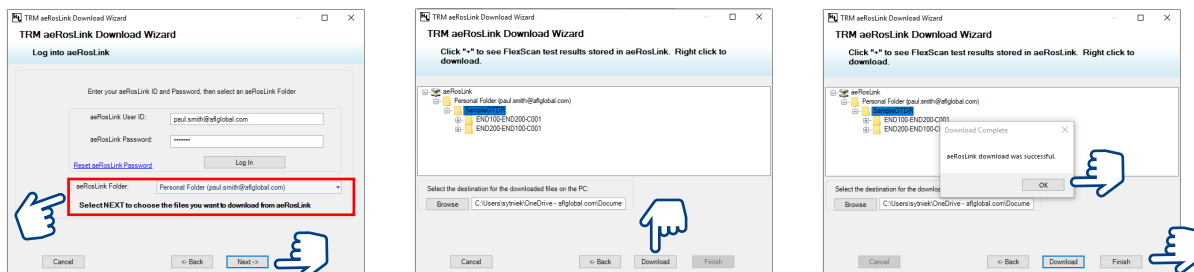
- Touch and Hold to select a test result; Or Touch "Select Files" icon, then touch files or folders to be sent
- Touch 3-bar Menu, then touch Send to transfer selected data

On TRM

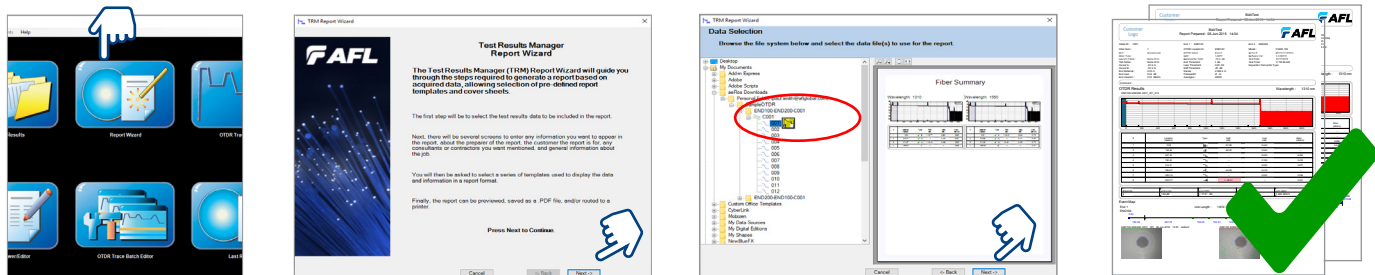
8 Download results from aeRoLink to TRM and use Report Wizard to generate reports



Launch TRM and open aeRosLink Download Wizard Start Download Wizard Log In to aeRosLink



Select 'Personal' folder; tap Next Select files and start download When done, click OK then Finish



Launch Report Wizard Start Wizard Navigate and select test results; Follow Wizard to generate reports View generated reports