

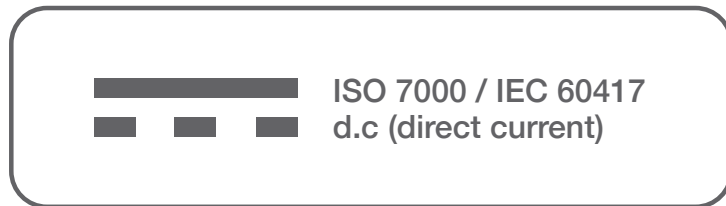
# O20

## SPECIFICATION MANUAL



# Glossary of terms

---



<b>dB</b>	Decibel
<b>dBm</b>	Decibel milliwatts
<b>FibreIRS™</b>	Fibre Integrated Reception Systems
<b>GTU</b>	Gateway Termination Unit
<b>HH</b>	Horizontal High
<b>HL</b>	Horizontal Low
<b>LED</b>	Light Emitting Diode
<b>LNB</b>	Low Noise Block
<b>mA</b>	milliamps
<b>ODU</b>	OutDoor Unit
<b>OTx</b>	Optical Transmitter
<b>PSU</b>	Power Supply Unit
<b>RF</b>	Radio Frequency
<b>VH</b>	Radio Frequency
<b>VL</b>	Radio Frequency

# Introduction

---

The purpose of this guide is to enable the successful installation of the Global Invacom FibreIRS system, utilising the O2O converter.

## This guide assumes that:

- A site survey has been completed; the location of the dish has been chosen and the dish has been installed.
- The location for all O2O's has been selected. This should be in a clean dry indoor environment.
- The OTx has been installed with the WideBand LNB mounted with suitable fixings or that a fibre optic LNB / ODU32 has been installed.
- Passive Optical Network (PON) has been planned and installed correctly; using Global Invacom approved optical splitters.
- Approved optical cables have been installed either using Global Invacom pre-terminated optical patch cables or un-terminated cable, which has been successfully site terminated.
- All optical connectors have been cleaned prior to making connection and, where required, Global Invacom barrel adaptors have been used.



# Connecting the O2O

---

The O2O has been designed to be used in conjunction with either the OTx, ODU32 or the fibre optic LNB to increase the number of subscribers that can be connected to a single dish. Please refer to diagram typical topology for example system.

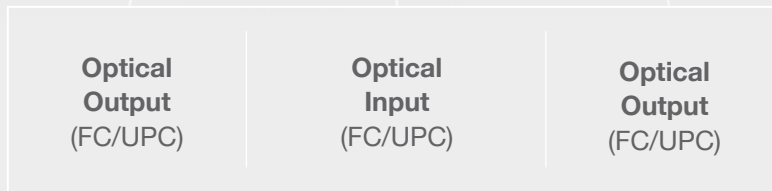
## Fibre Connection

- Clean the input fibre's optical connector and check the optical power using a suitable optical power meter. Optical power in to the O2O must be between  $-3\text{dBm}$  and  $-12\text{dBm}$ . Use an optical attenuator if connected directly to an OTx, ODU32 or optical LNB.
- Clean the optical connector and make a connection to the optical input of the O2O, ensuring the keyway is aligned.
- Repeat procedure for all optical outputs used.
- Optical output power should be measured on each output and be  $+7\text{dBm}$  ( $0.5\text{dB}$ ) is recommended.

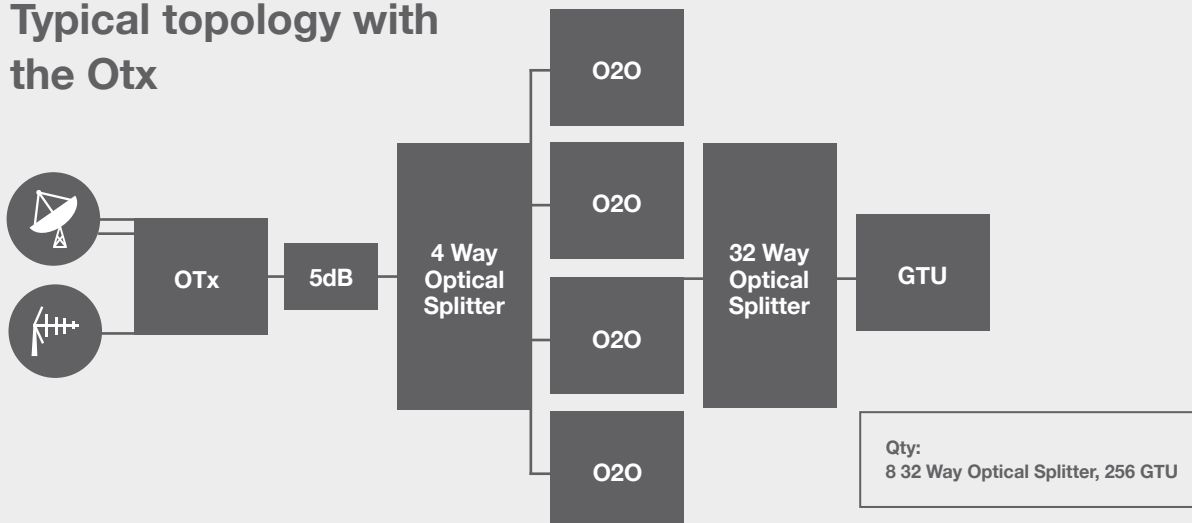
## Powering

- The O2O can be directly powered on the F connector power input using a 20V PSU (DVE DSA-40CA-19 200120) with the Jack to F adapter.
- The mains adapter is the disconnect device for the unit. Please ensure it is easily accessible.
- LED on side of unit is to indicate correct powering of unit. The LED should be a constant green.

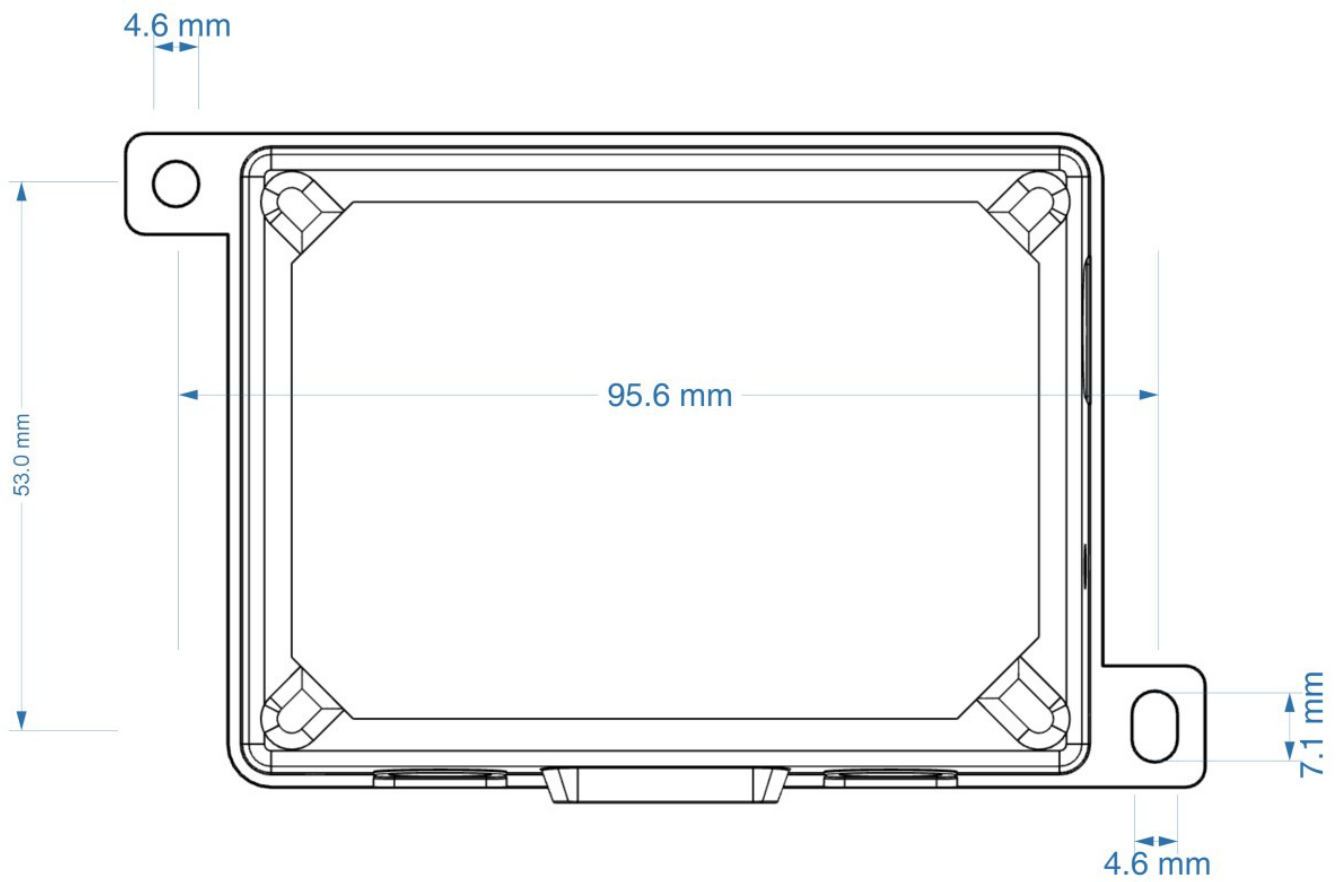
# O2O Connections



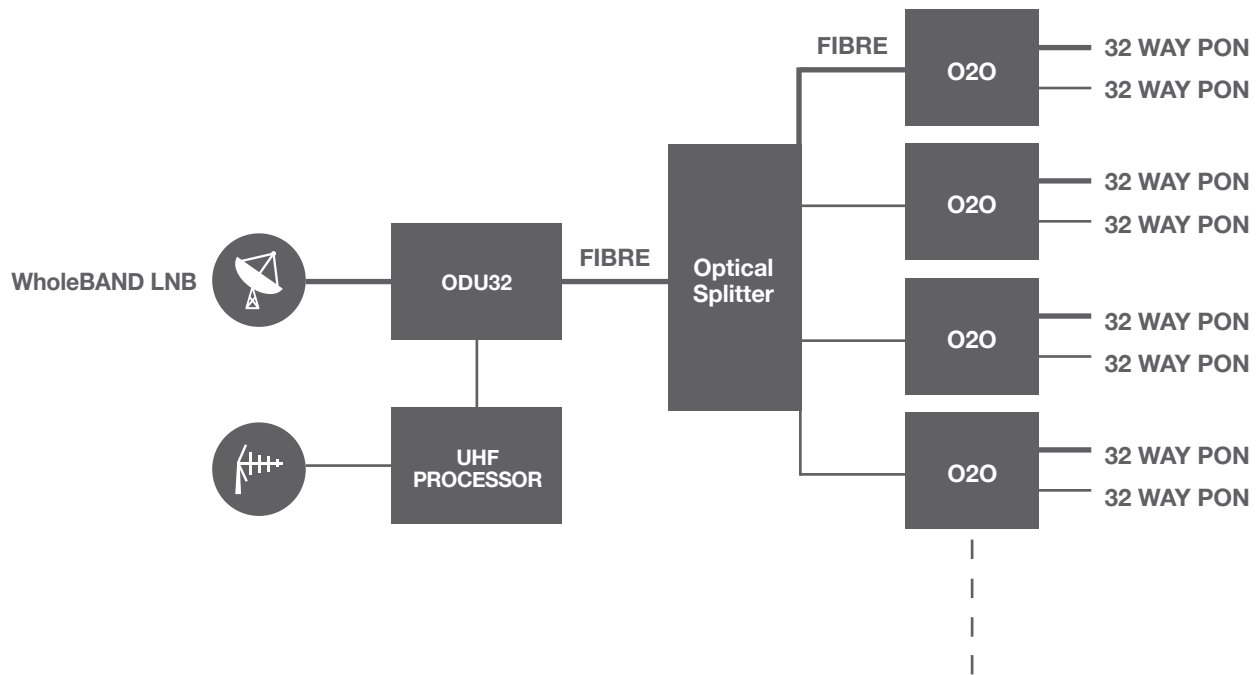
## Typical topology with the Otx



# Mounting Dimensions



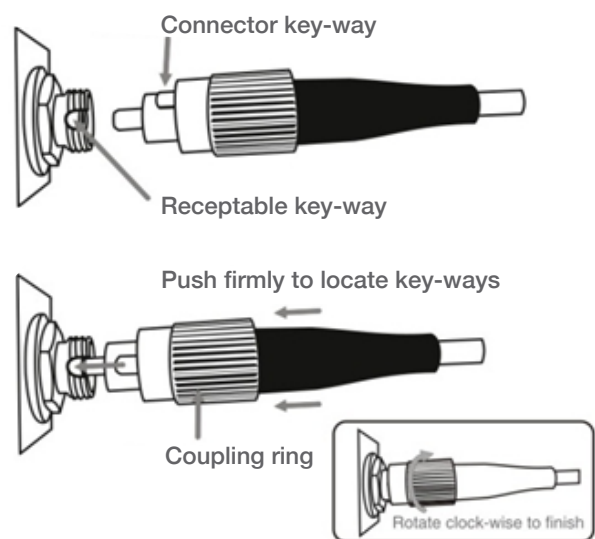
# Typical topology with ODU32



**Always ensure the end of the fibre is clean before commencing.**

- Align the **key-way** on the FC-UPC Connector, with the **key-way** on the fibre receptacle. Push the connector firmly into the socket.
- Ensure the **key-ways** are firmly located before rotating the coupling ring clock-wise onto the receptable (insert picture).

**Note: Failure to follow these instructions correctly will result in attenuation**

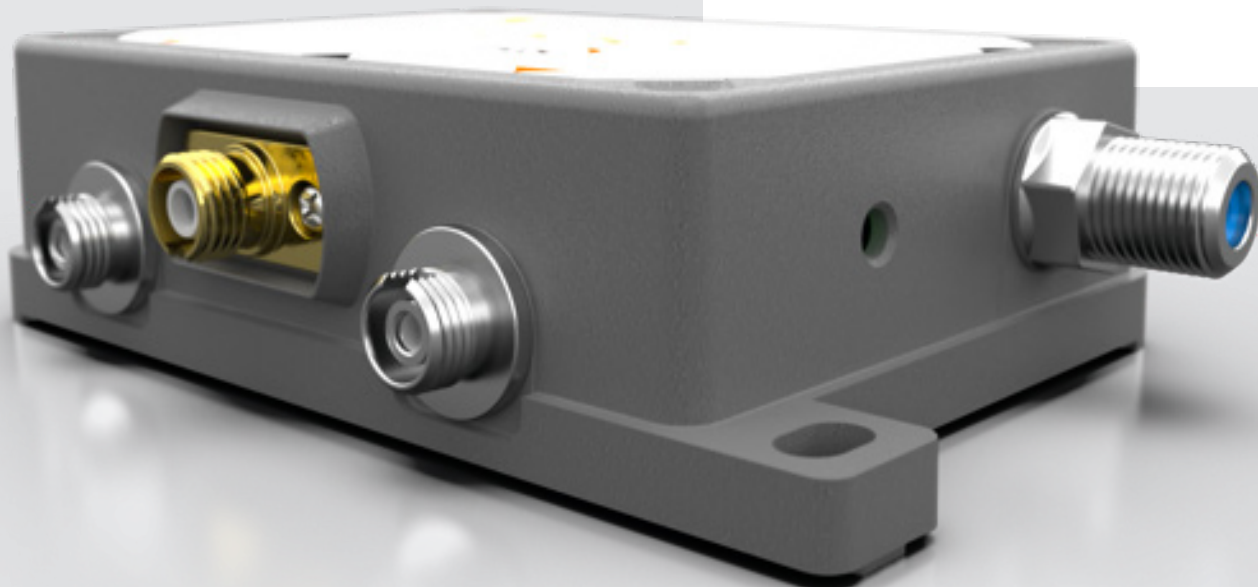


Part No:

**D000411**

Alternate Part No:

**XXXXXXXXXX**



### Waste Electrical and Electronic Equipment (WEEE)

Global Invacom Ltd recognises its responsibilities and obligations under all current National and European legislation and regulations and is totally committed to and in support of compliance with the European Union Directives on Waste, Electrical and Electronic Equipment (WEEE). We are also committed to meeting our importer responsibilities and obligations, as defined in the scope of the Directives, for those products that we import into the U.K. market place.

All of our suppliers are required to ensure that all products, (that fall within the scope of the Directives), are marked with the “Do Not Dispose of in Household Waste” symbol as prescribed in the WEEE Directive.

Global Invacom Ltd has an obligation to ensure the appropriate steps are taken for the recovery and recycling of WEEE from its customers. To meet this obligation we ask customers to contact the Customer service Department (+44 (0)1438 310510) sales@globalinvacom.com once the product has reached the end of its life. Alternatively the product can be disposed of at a designated collection point for the recycling of waste electrical and electronic equipment.



**www.globalinvacom.com Email: sales@globalinvacom.com**

Global Invacom cannot be held responsible for damage caused to equipment during, or following the Installation of the product. For best results always have satellite accessories installed by a professional Installer. Global Invacom reserve the right to change or amend products without prior notice.

**Copyright Global Invacom Ltd 2021 PRN: WEE/KF0056TR PCS: B2B Compliance Ltd**

**Global Invacom Ltd. Freeman House, John Roberts Business Park, Pean Hill, Canterbury, Kent CT5 3BJ**