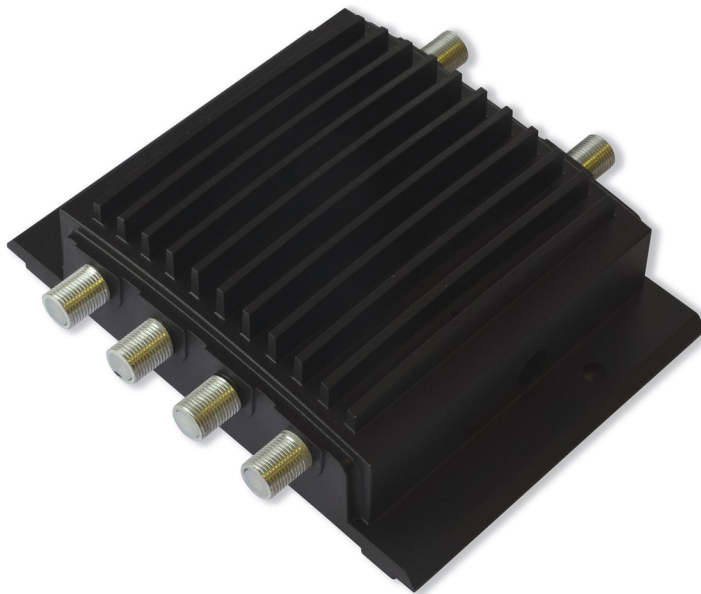
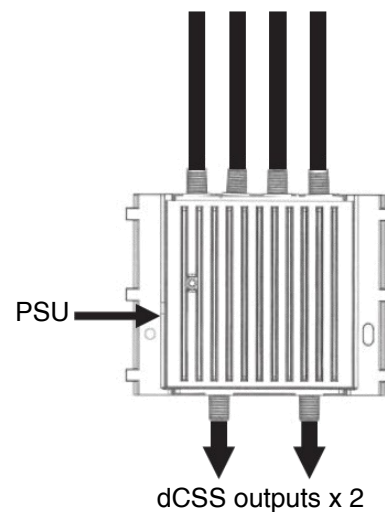


- Supports SKY Q, Analogue SCR, Legacy, dCSS
- EN50494/EN50607 comms
- Discreet stylised design
- Compatible with all traditional multiswitches

The dCSS adapter converts 4 standard IRS feeds to 2 dCSS outputs. Terrestrial signals are overlaid onto both output ports. One LED indicator allows the user to monitor the status of the unit. Able to work in legacy, analogue SCR (aSCR) and digital SCR (dSCR) modes.



Connections to  
SwitchBlade/GTU/Multiswitch



## Technical Specifications

### Product Part No.

dCSS Adapter	D000363
--------------	---------

### Inputs (Electrical)

Parameter	Min	Max	Notes
Input 1 RF frequency range (MHz)	88	1950	
Input 2 RF frequency range (MHz)	950	1950	
Input 3 RF frequency range (MHz)	1100	2150	
Input 4 RF frequency range (MHz)	1100	2150	
Impedance	75Ω		
Nominal input level	75dBμV		

Output (Electrical)			
Parameter	Min	Max	Notes
Nominal impedance	75Ω		
Return loss	10dB		
Gain variation across band		6dB	
Nominal output level	80dBμV		

Control signals (Legacy only)			
Vertical select voltage	11.5V	14.0V	13V nominal
Horizontal select voltage	16V	19V	18V nominal
Low / High band	0/22KHz tone		

DC specification		
Input voltage	20V	
Current consumption	430mA max	
Max supply current (inputs total)	500mA	
Max supply current (inputs per port)	250mA	

Connectors	
Input	F x 4
Output	F x 2
Power supply	2.1mm Jack

Environmental Specification	
Operating Temperature	-20°C to +50°C
Storage temperature	-40°C to +70°C

Standards	
Cenelec	EN 50607
Cenelec	EN 50494

Optical cabling	
Fibre type	Single mode
Standard	GI - approved G657a

Dimensions	
Size (W x H x D)	127mm x 118mm x 38mm
Weight	302g (unit only)

**Global Invacom will only support systems that are installed using  
FibreIRS™ approved fibre cabling & system components**

Note: Specifications subject to change without notice