

DS-6900UDI Series Decoder

Features and Functions



Professional and Reliable

- DS-6901UDI provides HDMI, VGA, and BNC output interfaces.
- DS-6904UDI, DS-6908UDI, DS-6910UDI, DS-6912UDI, DS-6916UDI provide HDMI (adaptable to DVI-D) and BNC output interfaces.
- Up to 4K (3840 × 2160@30Hz) via HDMI output interfaces (only for even interface).
- Up to 8-ch decoding at 24 MP resolution (DS-6916UDI).
- H.265+/H.265, H.264+/H.264, Hik264, MPEG4 and MJPEG video compression.
- PS, RTP, TS, ES, HIK encapsulation formats.
- Three encoding levels: baseline, main, and high-profile.
- G.722, G711A, G726, G711U, MPEG2-L2, and AAC audio compression.
- Two decoding modes: active decoding and passive decoding.
- Remote video files' decoding output.
- Supports two-way audio via client software.
- Supports window opening and window roaming.
- Supports multi-screen control with PC installed with RSC server.
- Gets stream and decodes via URL and RTSP from encoding devices.
- Displays the decoded video stream on the video wall by directly linking cameras or by stream media forwarding.
- You can configure what the video wall shows when decoding ends and streaming fails via the Web browser and client software.
- Configurable LED width and height parameters when the LED is connected.
- Regular and irregular virtual screen configurable to display multiple signal sources and get rid of the restriction of physical screen.
- Accessible by 2.4 MP DeepinView camera.
- Accessible by thermal network camera and you can view the temperature measurement, dynamic fire source detection, ship detection and VCA information in live view and playback.
- You can enable or disable the smart information for the thermal network camera.
- Remote PTZ control via transparent channel.
- Two-way audio.
- Port aggregation technology (Ethernet Channel).



DS-6901/6904/6908UDI

Specifications

Model		DS-6901UDI	DS-6904UDI	DS-6908UDI
Video/Audio input	VGA and DVI-I input	/	WSXGA: 1680×1050/60Hz WXGA: 1440×900/60Hz WXGA: 1280×800/60Hz, 1366×768/60Hz, 1080p: 1920 × 1080@50/60Hz UXGA: 1600 × 1200@60Hz XVGA: 1280 × 960@60Hz 720p: 1280 × 720@50Hz/60Hz SXGA: 1280 × 1024@60Hz XGA: 1024 × 768@60Hz	
Video/Audio output	HDMI output	1-ch	4-ch	8-ch
		4K: 3840 × 2160@30Hz (for odd interface only) 1080p: 1920 × 1080@50/60Hz WSXGA: 1680×1050/60Hz UXGA: 1600 × 1200@60Hz (for odd interface only) 720p: 1280 × 720@50Hz/60Hz SXGA: 1280 × 1024@60Hz XGA: 1024 × 768@60Hz		
	VGA output	1-ch	/	/
		1080p: 1920 × 1080@50/60Hz WSXGA: 1680×1050/60Hz SXGA: 1280 × 1024@60Hz 720p: 1280 × 720@50Hz/60Hz XGA: 1024 × 768@60Hz		
BNC output	1-ch	2-ch, 1 DB 15	4-ch, 1 DB 15	
Audio/ Video decoding	Decoding resolution	Up to 12MP		
	Decoding channel	16-ch	32-ch	64-ch
	Decoding capability	24MP@30fps: 1-ch 12MP@20fps: 2-ch 8MP@30fps: 4-ch 5MP@30fps: 6-ch 3MP@30fps: 10-ch 1080p@30fps: 16-ch	24MP@30fps: 2-ch 12MP@20fps:4-ch 8MP@30fps: 8-ch 5MP@30fps: 12-ch 3MP@30fps: 20-ch 1080p@30fps: 32-ch	24MP@30fps: 6-ch 12MP@20fps:8-ch 8MP@30fps: 16-ch 5MP@30fps: 24-ch 3MP@30fps: 40-ch 1080p@30fps: 64-ch
	Split screen	1/4/6/8/9/12/16	1/4/6/8/9/12/16/25	1/4/6/8/9/12/16/25/36
External interface	Network interface	1, 10/100/1000 Mbps self-adaptive	2, 10/100/1000 Mbps self-adaptive management network interface	2, 10/100/1000 Mbps self-adaptive

		Ethernet interface	Ethernet interface 16, 10M/100Mbps self-adaptive Ethernet interface	
	Serial interface	1 RS-232 (RJ45), 1 RS-485		
	Two-way audio in	1-ch, 3.5 mm connector (2.0 Vp-p, 1 K Ω)		
	Two-way audio out	1-ch, 3.5 mm connector (2.0 Vp-p, 1 K Ω)		
	Audio output	1-ch	4-ch, 1 DB 15	8-ch, 1 DB 15
	Alarm in	8-ch		
	Alarm out	8-ch		
General	Power supply	12 VDC	220 VAC	
	Power consumption	≤ 15 W	≤ 70 W	
	Working temperature	-10 °C to +55 °C (14 °F to 131 °F)		
	Working humidity	10% to 90%		
	Dimensions (W × D × H)	220 × 148 × 45 mm (8.66 × 5.83 × 1.77 inch)	440 × 311 × 44.5 mm (17.32 × 12.24 × 1.75 inch)	
	Weight	≤ 1.2 kg (2.65 lb)	≤ 5.2 kg (11.4 lb)	

DS-6910/6912/6916UDI

Model		DS-6910UDI	DS-6912UDI	DS-6916UDI
Video/Audio input	VGA and DVI-I input	WSXGA: 1680×1050/60Hz WXGA: 1440×900/60Hz WXGA: 1280×800/60Hz, 1366×768/60Hz, 1080p: 1920 × 1080@50/60Hz UXGA: 1600 × 1200@60Hz XVGA: 1280 × 960@60Hz 720p: 1280 × 720@50Hz/60Hz SXGA: 1280 × 1024@60Hz XGA: 1024 × 768@60Hz		
	HDMI output	10-ch	12-ch	16-ch
Video/Audio output	HDMI output	4K: 3840 × 2160@30Hz (for odd interface only) 1080p: 1920 × 1080@50/60Hz WSXGA: 1680×1050/60Hz UXGA: 1600 × 1200@60Hz (for odd interface only) 720p: 1280 × 720@50Hz/60Hz SXGA: 1280 × 1024@60Hz XGA: 1024 × 768@60Hz		
	BNC output	5-ch, 2 DB 15	6-ch, 2 DB 15	8-ch, 2 DB 15
Audio/ Video decoding	Decoding resolution	Up to 12MP		
	Decoding channel	80-ch	96-ch	128-ch
	Decoding capability	24MP@30fps: 5-ch 12MP@20fps: 10-ch 8MP@30fps: 20-ch 5MP@30fps: 30-ch 3MP@30fps: 50-ch 1080p@30fps: 80-ch	24MP@30fps: 6-ch 12MP@20fps: 12-ch 8MP@30fps: 24-ch 5MP@30fps: 36-ch 3MP@30fps: 60-ch 1080p@30fps: 96-ch	24MP@30fps: 8-ch 12MP@20fps: 16-ch 8MP@30fps: 32-ch 5MP@30fps: 48-ch 3MP@30fps: 80-ch 1080p@30fps/3 Mbps: 128-ch
	Split screen	1/4/6/8/9/12/16/25/36		
External interface	Network interface	2, 10/100/1000 Mbps self-adaptive management network interface 2, 10/100/1000 Mbps self-adaptive Ethernet interface 16, 10M/100 Mbps self-adaptive Ethernet interface		
	Serial interface	1 RS-232 (RJ45), 1 RS-485		
	Two-way audio in	1-ch, 3.5 mm connector (2.0 Vp-p, 1 KΩ)		
	Two-way audio out	1-ch, 3.5 mm connector (2.0 Vp-p, 1 KΩ)		
	Audio output	10-ch, 2 DB 15	12-ch, 2DB 15	16-ch, 2 DB 15
	Alarm input	8		

	Alarm out	8
General	Power supply	100 to 240 VAC
	Power consumption	≤ 108 W
	Working temperature	-10 °C to +55 °C (14 °F to 131 °F)
	Working humidity	10% to 90%
	Dimensions (W × D × H)	440 × 311 × 80 mm (17.32 × 12.24 × 3.15 inch)
	Weight	≤ 6.4 kg (14.11 lb)

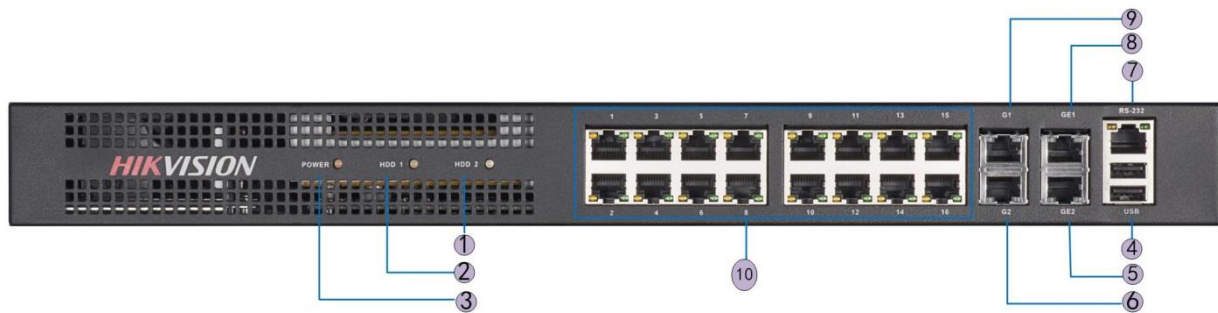
Physical Interfaces

DS-6901UDI Front Panel and Rear Panel



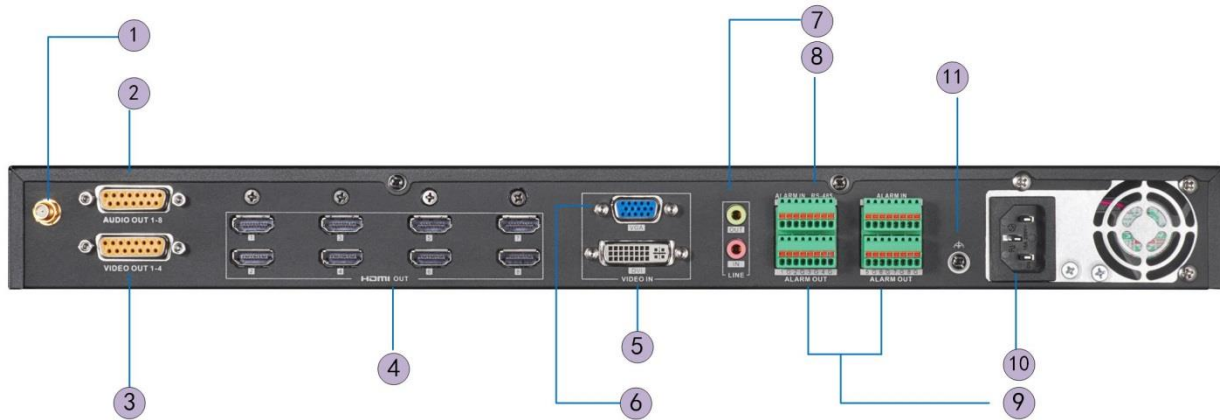
Index	Description	Index	Description
1	Network connection LED indicator	8	Line input/output
2	Power LED indicator	9	RS-232 interface
3	Data transmitting/receiving status LED indicator	10	Alarm input/output
4	HDMI video output	11	LAN 10/100/1000 Mbps Ethernet interface
5	VGA video output	12	RS-485 interface
6	Audio out	13	Power supply (12 VDC)
7	BNC video output	14	GND (Ground)

DS-6904UDI/6908UDI Front Panel



Index	Description	Index	Description
1	Power indicator	6	LAN 10/100/1000 Mbps Ethernet interface 2
2	HDD 1 indicator (reserved)	7	RS-232 interface
3	HDD 2 indicator (reserved)	8	Local management network interface 1
4	USB 2.0	9	LAN 10/100/1000 Mbps Ethernet interface 1
5	Local management network interface 2	10	LAN 10/100 Mbps Ethernet interface

DS-6908UDI Rear Panel

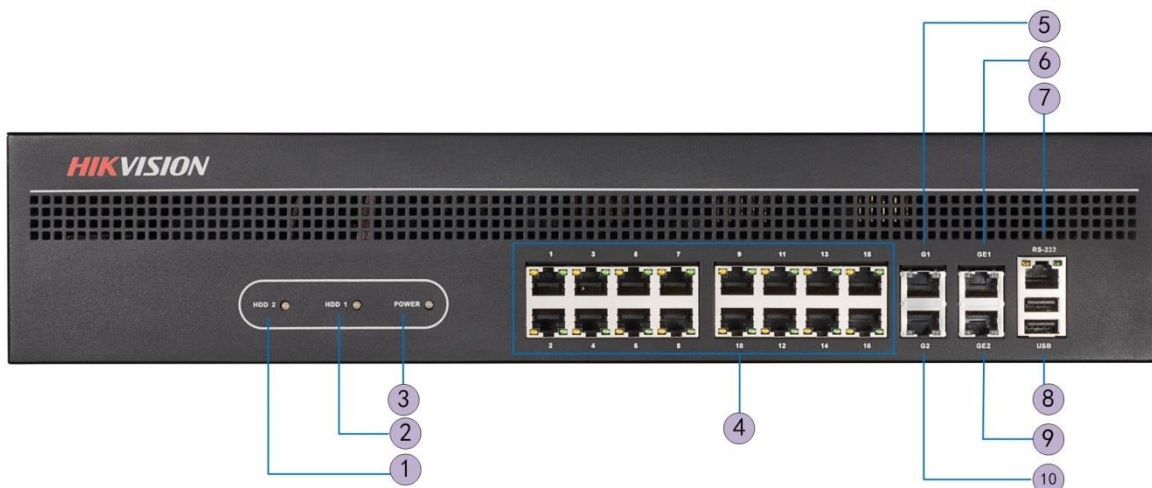


Index	Description	Index	Description
1	Wi-Fi	7	Line input/output
2	Audio out	8	RS-485 interface
3	Video out	9	Alarm input/output
4	HDMI video out	10	Power
5	DVI video input	11	GND
6	VGA video input		



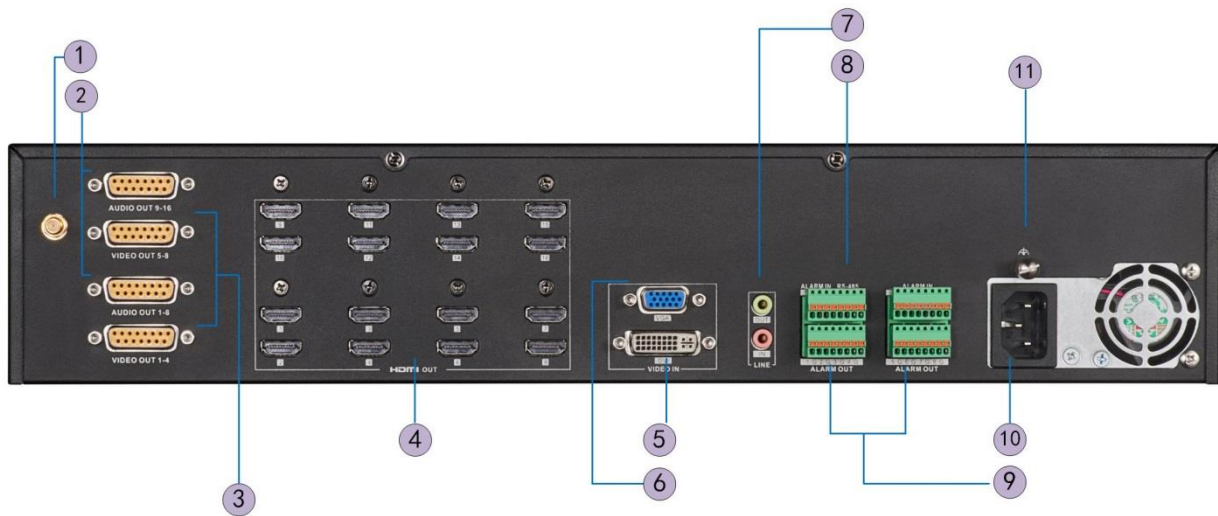
DS-6904UDI provides 4-ch HDMI output interfaces and other interfaces are the same with DS-6908UDI.

DS-6910UDI/6912UDI Front Panel



Index	Description	Index	Description
1	HDD 1 indicator (reserved)	6	Local management network interface 1
2	HDD 2 indicator (reserved)	7	RS-232 interface
3	Power indicator	8	USB 2.0
4	LAN 10/100Mbps Ethernet interface	9	Local management network interface 2
5	LAN 10/100/1000 Mbps Ethernet interface 1	10	LAN 10/100/1000 Mbps Ethernet interface 2

DS-6916UDI Rear Panel



Index	Description	Index	Description
1	Wi-Fi	7	Line input/output
2	Audio out	8	RS-485 interface
3	Video out	9	Alarm input/output
4	HDMI video output	10	Power
5	DVI video input	11	GND
6	VGA video output		

Distributed by



NOTE

DS-6910UDI provides 10 HDMI output interfaces, DS-6912UDI provides 12 HDMI output interfaces and other interfaces are the same with DS-6916UDI.

HIKVISION®

Headquarters

No.555 Qianmo Road, Binjiang District,
Hangzhou 310051, China
T +86-571-8807-5998
overseasbusiness@hikvision.com

Available Models

DS-6901UDI, DS-6904UDI, DS-6908UDI, DS-6910UDI, DS-6912UDI,
DS-6916UDI

Hikvision USA
T +1-909-895-0400
sales.usa@hikvision.com

Hikvision Australia
T +61-2-8599-4233
salesau@hikvision.com

Hikvision India
T +91-22-28469900
sales@pramahikvision.com

Hikvision Canada
T +1-866-200-6690
sales.canada@hikvision.com

Hikvision Thailand
T +662-275-9949
sales.thailand@hikvision.com

Hikvision Europe
T +31-23-5542770
sales.eu@hikvision.com

Hikvision Italy
T +39-0438-6902
info.it@hikvision.com

Hikvision Brazil
T +55 11 3318-0050
Latam.support@hikvision.com

Hikvision Turkey
T +90 [216]521 7070- 7074
sales.tr@hikvision.com

Hikvision Malaysia
T +601-7652-2413
sales.my@hikvision.com

Hikvision UK & Ireland
T +01628-902140
sales.uk@hikvision.com

Hikvision South Africa
Tet: +27 (10) 0351172
sale.africa@hikvision.com

Hikvision France
T +33(0)1-85-330-450
info.fr@hikvision.com

Hikvision Kazakhstan
T +7-727-9730667
nikia.panfilov@hikvision.ru

Hikvision Vietnam
T +84-974270888
sales.vt@hikvision.com

Hikvision UAE
T +971-4-4432090
salesme@hikvision.com

Hikvision Singapore
T +65-6684-4718
sg@hikvision.com

Hikvision Spain
T +34-91-737-16-55
info.es@hikvision.com

Hikvision Tashkent
T +99-87-1238-9438
uzb@hikvision.ru

Hikvision Hong Kong
T +852-2151-1761
info.hk@hikvision.com

Hikvision Russia
T +7-495-669-67-99
saleru@hikvision.com

Hikvision Korea
T +82-(0)31-731-8817
sales.korea@hikvision.com

Hikvision Poland
T +48-22-460-01-50
info.pl@hikvision.com

Hikvision Indonesia
T +62-21-2933759
Sales.Indonesia@hikvision.com

Hikvision Colombia
sales.colombia@hikvision.com