



IDEAL NETWORKS

NavITEK NT (Plus/Pro)





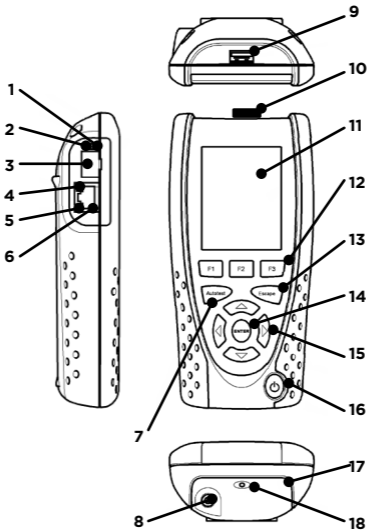
Quick Reference Guide
151835 Issue 3

© IDEAL INDUSTRIES Ltd 2016

A subsidiary of IDEAL INDUSTRIES INC.



IDEAL INDUSTRIES, INC.

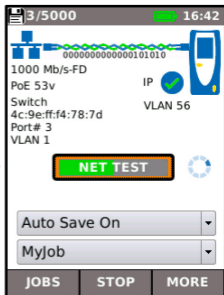


- 1 Optical link LED (Pro only)
- 2 Optical activity LED (Pro only)
- 3 Optical port (SFP) (Pro only)
- 4 Ethernet LED
- 5 Activity LED
- 6 Cable socket
- 7 Autotest button
- 8 DC in connector
- 9 USB socket
- 10 Wi-Fi adapter
- 11 Display
- 12 Function buttons
- 13 Escape button
- 14 ENTER button
- 15 Cursor buttons
- 16 Power button
- 17 Battery module
- 18 Charging indicator LED

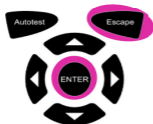
Charging Indicator LED (18)	Status
Green	Charging
Off	Charging complete
Flashing	Not charging

Three Ways to Navigate

A



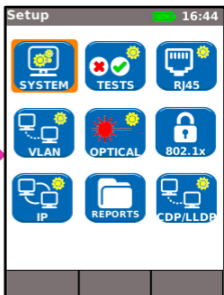
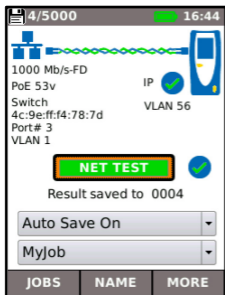
B



Escape - returns to previous screen

ENTER - accepts selection

C



Job Setup

4/5000 13:40

Ready to test
Press Autotest

Auto Save On

MyJob

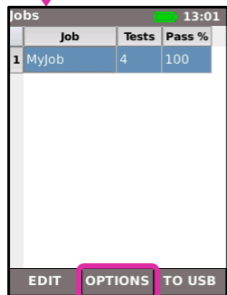
JOB NAME MORE



jobs 13:01

	Job	Tests	Pass %
1	MyJob	4	100

EDIT **OPTION** TO USB



New Job 13:00

Job NewJob

Info 1 Site

Info 2 Building

Info 3 Floor

Info 4 Room

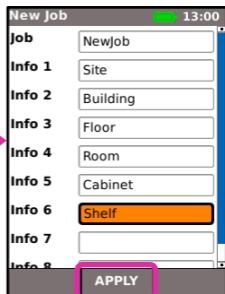
Info 5 Cabinet

Info 6 Shelf

Info 7

Info 8

APPLY



4/5000 13:40

Ready to test
Press Autotest

Auto Save On

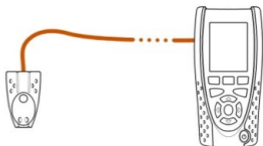
NewJob

JOB NAME MORE



Cable Testing

MORE
SETUP



Test 14:39

Cable Type **4-Pair 568B**

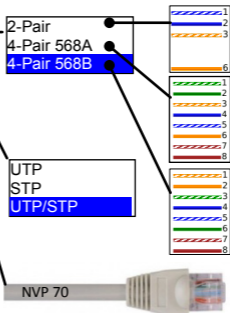
Shield Type UTP/STP

Use Custom NVP

Custom NVP (%) 70

1 2 3 4 5 6 7 8 S

APPLY



2/5000 18:32

01

Wiremap

Auto Save On

Myjob

JOB'S STOP MORE

Wiremap 18:32

STRAIGHT

4-Pair 568B UTP/STP

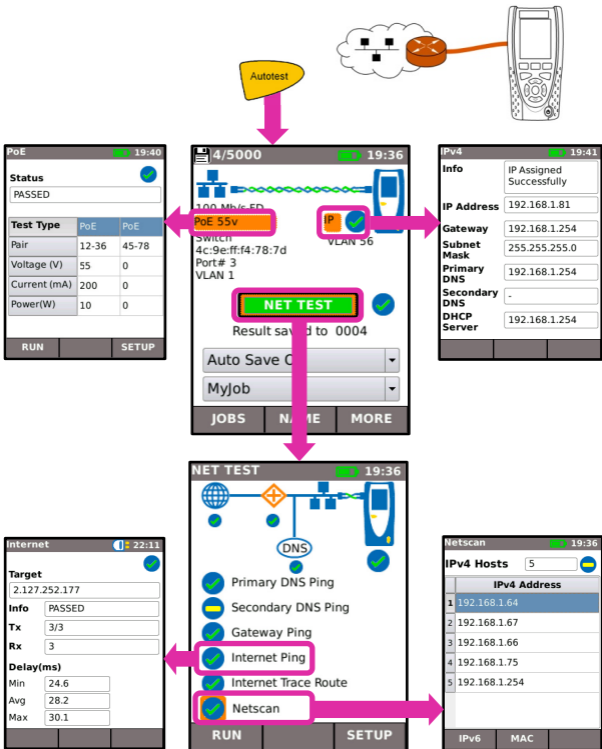
1 2 3 4 5 6 7 8 S

1 5m
2 5m
3 5m
4 5m
5 5m
6 5m
7 4m
8 4m
S S

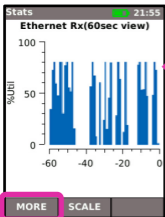
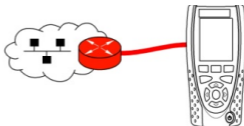
4m

RUN SETUP

Network Testing over Copper



Network Testing over Fiber (Pro only)



4/5000 19:36

Opt 1000 Mb/s
Rx Pwr -4.13 dB
J0:23:47:cb:3b:3f
ProCurve 2910al-24G-P
Port# 1
VLAN -

NET TEST

result saved to 0004

Save On

More

SETUP TESTS

Optical 12:13

Status

Available

Vendor

AVAGO

Part No.

AFBR-57LSAPZ

Rx Pwr (dBm)

-4.13

Tx Pwr (dBm)

-5.11

VLAN 00:59

Max Rx Bandwidth (Mb/s)

743.504

Detected VLAN IDs

20, 35

VLAN ID

50

Change VLAN

20

MORE APPLY

19:40

System Name: ProCurve
2910al-24G-PoE Switch
System Description: ProCurve
J9146A 2910al-24G-PoE Switch
IP Address: -
Port Address:
00:23:47:cb:3b:3f
Port Description: 1
Capabilities: B
VLAN: -

Tests 02:32

PING4 PING6

LOOP BLINK

RESET SAVE SETUP

Port 18:59

	Port
Speed	100 Mb/s-FD
Duplex	Full
MDI/MDIX	MDI
Signal Lvl	Normal
Polarity	Normal

MORE

Ping4 03:30

Target

2.127.237.172

Info

PASSED

Tx

3/3

Rx

3

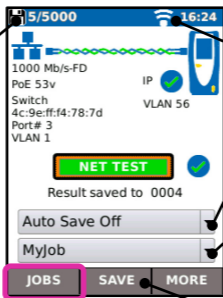
Delay(ms)

Min 29.7
Avg 30.1
Max 30.3

RUN SETUP

Test Reports

5 tests are saved /
memory capacity
is 5000 tests



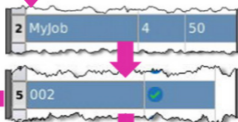
Indicates Wi-Fi
is enabled

Select result
saving mode

Select current
Job

Save the result
manually when
Auto Save is Off

View
result



Select job

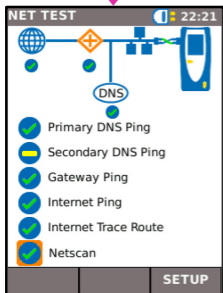
Select result



OR Save
report to
USB

OR Smartphone
downloads reports using
IDEAL AnyWARE™
app. for Android™ /
Apple

TO USB



Apple is a trademark of Apple Inc., registered in the
U.S. and other countries.

Android is a trademark of Google Inc.

Menu Map

