



# OTDR II

Tier-2 Optical Time Domain Reflectometer for Multimode and Single-mode Fibre Cabling

# OTDR II

Tier-2 Optical Time Domain Reflectometer for Multimode and Single-mode Fibre Cabling

The OTDR II is the first tablet inspired OTDR that is handy, lightweight and rugged enough for any environment. With a 7-inch outdoor enhanced touchscreen, the most efficient hand held display in the industry, it delivers an unprecedented user experience. Its intuitive user interface including onboard manual ensures a fast learning curve. Plus, its new and improved OTDR platform offers icon-based functions, instant boot-up, automatic macrobend finders as well as improved auto and real-time modes.

## The handheld OTDR... reinvented.

The OTDR II is finally bringing the iOLM, an intelligent OTDR-based application, to the handheld market. This advanced software turns even the most complex trace analysis into a simple, one-touch task. The iOLM feature removes the need for analysis of complicated OTDR traces. However, the traces are available on the reports and PC software if required. For traditional OTDR users an OTDR II trace option is available to view and analyse traces on the tester.

The amazing 12-hour battery life will never let a technician down, and the plug-and-play hardware options, like the power meter and the USB video probe, make every technician's job easier. Unlike traditional OTDRs, OTDR II does not require specific launch cords which makes testing more cost effective and user friendly.

## The entry-level solution designed for all your testing needs

The OTDR II/iOLM features a dynamic range of 36 dB in single-mode and 29 dB in multimode, as well as industry-leading dead zones. This ensures efficient testing of closely spaced events such as patch cords in data centres, or patch panels in central offices (COs). The OTDR II is optimised for point-to-point testing of any access network, and is suitable for testing through 1x32 splitters.



## Get the best out of your data post-processing

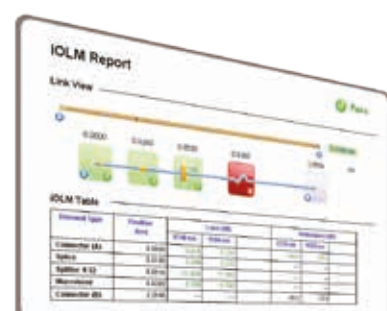
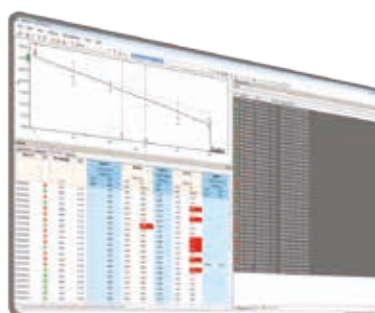
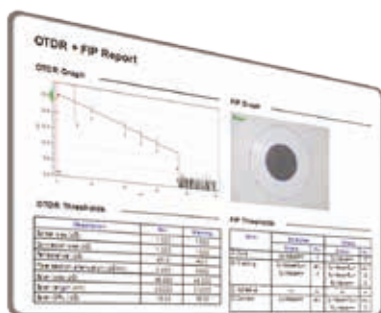
The FastReporter2 basic software included as standard allows users to create typical results of single measurements. The optional full license FastReporter2 is the perfect complement to your OTDR II, and can be used to combine multiple test results of the OTDR II and fibre probe into detailed PDF documentation.

Designed for off-line analysis, FastReporter2 offers reliable data and report management in a user-friendly

environment. A 30-day trial version of the full license FastReporter2 is included.

Alternatively you can use the onboard reporting tool to create comprehensive PDF documentation.

For further details of the difference between the FastReporter2 basic software and the full licence of FastReporter2 software, please visit our website.

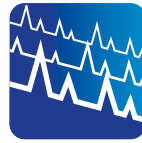


# iOLM - removing the complexity from OTDR testing

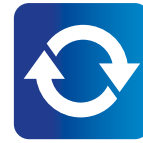
**OTDR testing comes with many challenges...**



Wrong OTDR traces



Countless traces to analyse



Repeating the same job twice



Complex instrument training/support

**In response to these challenges, IDEAL Networks is providing a better way to test fibre optics:**

The intelligent Optical Link Mapper (iOLM) turns complicated graphs into an easy to read diagram displaying all events along the link with pass/fail status for each event. The iOLM is an OTDR-based application designed to simplify OTDR testing by eliminating the need to configure parameters, and/or analyse and interpret multiple complex OTDR traces. Its advanced algorithms dynamically define the testing parameters, as well as the number of acquisitions that best fit the network under test. By correlating multiple pulse widths on multiple wavelengths, the iOLM locates and identifies faults with maximum resolution – all at the push of a single button.

## How does it work?

Turning traditional OTDR testing into clear, automated, first-time-right results for technicians of any skill level.

Dynamic multipulse acquisition



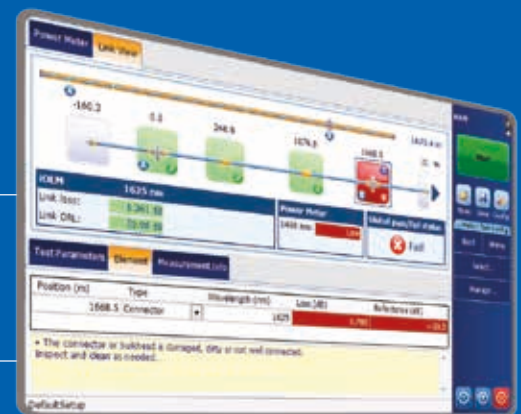
Intelligent trace analysis



All results combined into a single link view



Comprehensive diagnosis



Patent protection applies to the intelligent Optical Link Mapper, including its proprietary measurement software.

## Visual Fault Locator (VFL)

The plug-and-play VFL easily identifies breaks, bends, faulty connectors and splices, in addition to other causes of signal loss.

This basic, yet essential troubleshooting tool should be part of every field technician's toolbox and comes with the standard unit. The VFL visually locates and detects faults over distances of up to 5 km by creating a bright-red glow at the exact location of the fault on single-mode or multimode fibres.

## Optical Power Meter and VFL option

A high-level power meter (GeX) that can measure up to 27 dBm, the highest in the industry. This is essential for hybrid fibre-coaxial (HFC) networks or high-power signals. If used with an auto-lambda/auto-switching compatible light source, the power meter automatically synchronises on the same wavelength, thus avoiding any risk of mismatched measurement.

Installation is quick and easy, and can be performed by the user without the need for any software update. Simply exchange the VFL board with the new optical power meter and VFL board.

- Seven standard calibrated wavelengths

# Fibre connector inspection and certification

– the essential first step before any OTDR testing

Taking the time to properly inspect a fibre optic connector using an IDEAL Networks fibre inspection probe can prevent a host of issues from arising further down the line, thus saving you time, money and trouble.

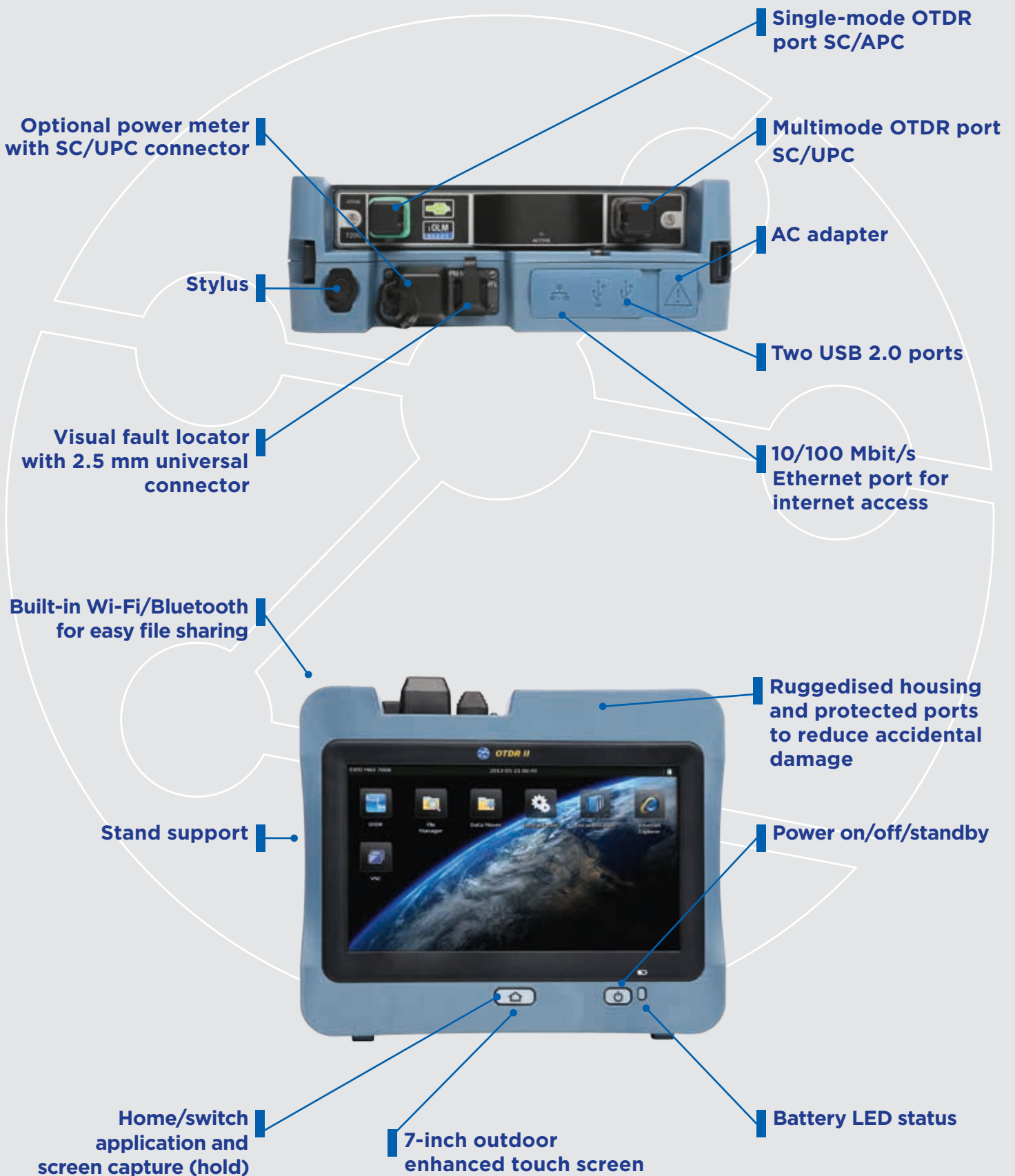


## Did you know that the connector of your OTDR II/iOLM is also critical?

The presence of a dirty connector at an OTDR port or launch cable can negatively impact your test results, and even cause permanent damage during mating. Therefore, it is critical to regularly inspect these connectors to ensure that they are free of any contamination. Making inspection the first step of your OTDR best practices will maximise the performances of your OTDR and your efficiency.

Features	USB Wired
	Semi-Automated <b>R230002</b>
<b>Three magnification levels (100x, 200x and 400x)</b>	✓
<b>Image capture</b>	✓
<b>Five-megapixel CMOS capturing device</b>	✓
<b>Automatic fibre image-centreing function</b>	✓
<b>Onboard pass/fail analysis</b>	✓
<b>Pass/fail LED indicator</b>	✓

# OTDR II



# OTDR II

## Tier-2 Optical Time Domain Reflectometer for Multimode and Single-mode Fibre Cabling



### Ordering Information

Part No.	Kit Contents
<b>R230000</b>	<b>OTDR II</b> - Quad OTDR with IOLM, ICERT (certification to international standards), SC adapters (multimode: SC/UPC, single-mode: SC/APC), visual fault locator, power supply, battery, carrying case

For further adapter options, please visit our website.

### Optional Accessories

Part No.	Description
<b>R230002</b>	Fibre inspection probe (100x, 200x & 400x), universal 2.5mm adapter tips and soft pouch
<b>R230050</b>	OTDR II - visual fault locator and power meter option for multimode and single-mode, SC adapters
<b>R230051</b>	FastReporter2 PC software - full licence
<b>SOFT2300TDR</b>	OTDR II trace option

For a full list of optional accessories, please visit our website.

### Basic Specifications

Display:	178 mm (7 inch) outdoor-enhanced touchscreen, 800 x 480 TFT
Interfaces:	Two USB 2.0 ports, RJ-45 LAN 10/100 Mbit/s
Wavelength (nm) <sup>a</sup> :	850/1300/1310/1550
Dynamic range (dB) <sup>b</sup> :	27/29/36/35
Event dead zone (m) <sup>c</sup> :	Multimode: 0.5 / Single-mode: 0.7
Attenuation dead zone (m) <sup>c and d</sup> :	Multimode: 2.5 / Single-mode: 3
Distance range (km):	0.1 to 260 for SM / 0.1 to 40 for MM
Pulse width (ns):	Multimode: 3 to 1 000 / Single-mode 3 to 20 000
Size (H x W x D):	166 mm x 200 mm x 68 mm (6 9/16 in x 7 7/8 in x 2 3/4 in)
Weight (with battery):	1.5 kg (3.3 lb)
<b>Built-In Power Meter (GeX - optional <sup>e</sup>)</b>	
Calibrated wavelengths (nm):	850, 1300, 1310, 1490, 1550, 1625, 1650
Power range (dBm) <sup>f</sup> :	27 to -50
<b>Visual Fault Locator (VFL)</b>	
Laser, 650 nm:	± 10 nm

#### Notes

- Typical
- Typical dynamic range with longest pulse and three-minute averaging at SNR = 1.
- Typical, for reflectance below -55 dB, using a 3-ns pulse.
- Attenuation dead zone at 1310 nm is 4.5 m typical with reflectance below -45 dB
- At 23 °C ± 1 °C, 1550 nm and FC connector. With modules in idle mode. Battery operated after 20-minute warm-up.
- Typical.

For detailed specifications, please visit our website.



IDEAL INDUSTRIES NETWORKS DIVISION  
 Unit 3, Europa Court, Europa Boulevard, Warrington,  
 Cheshire, WA5 7TN, UK.  
 Tel. +44 (0)1925 444 446 | Fax. +44 (0)1925 445501  
 uksales@idealnwd.com



A subsidiary of  
 IDEAL INDUSTRIES INC.



Specification subject to change  
 without notice. E&OE  
 © IDEAL Networks 2016  
 BROTRDRII0816V1.0-UK