



# See the whole picture to keep it all safe

## Product highlights

### Designed for medium-sized installations

Supports **unrestricted numbers of cameras** so you can connect any camera model and any number

Supports **unrestricted numbers of recording servers** so you can spread the installation across multiple buildings

Supports **master/slave set-up** so you can transparently view recordings from multiple servers from a single place

Easily add new users using **Microsoft Active Directory**

### Respond to incidents quickly

**Multi-layer, interactive maps** provide a complete overview of the entire system with camera locations

Camera locations and **live preview** video displayed directly on the map for quick investigations

Monitor, manage and resolve incidents quickly with **Alarm Manager**

Easily document events as they happen with **advanced video search tools**

Actively monitor entry points and communicate with people at gates with **two-way audio support**

### Access anytime, anywhere

**Three free clients** provides access on-site, off-site and on the go

**XProtect Smart Client** is a powerful interface for daily operations with sophisticated tools for finding and exporting evidence material

**Milestone Mobile** gives ultimate peace of mind with access to the system from anywhere

With **push notifications** sent directly to your mobile, you always know when something needs your attention

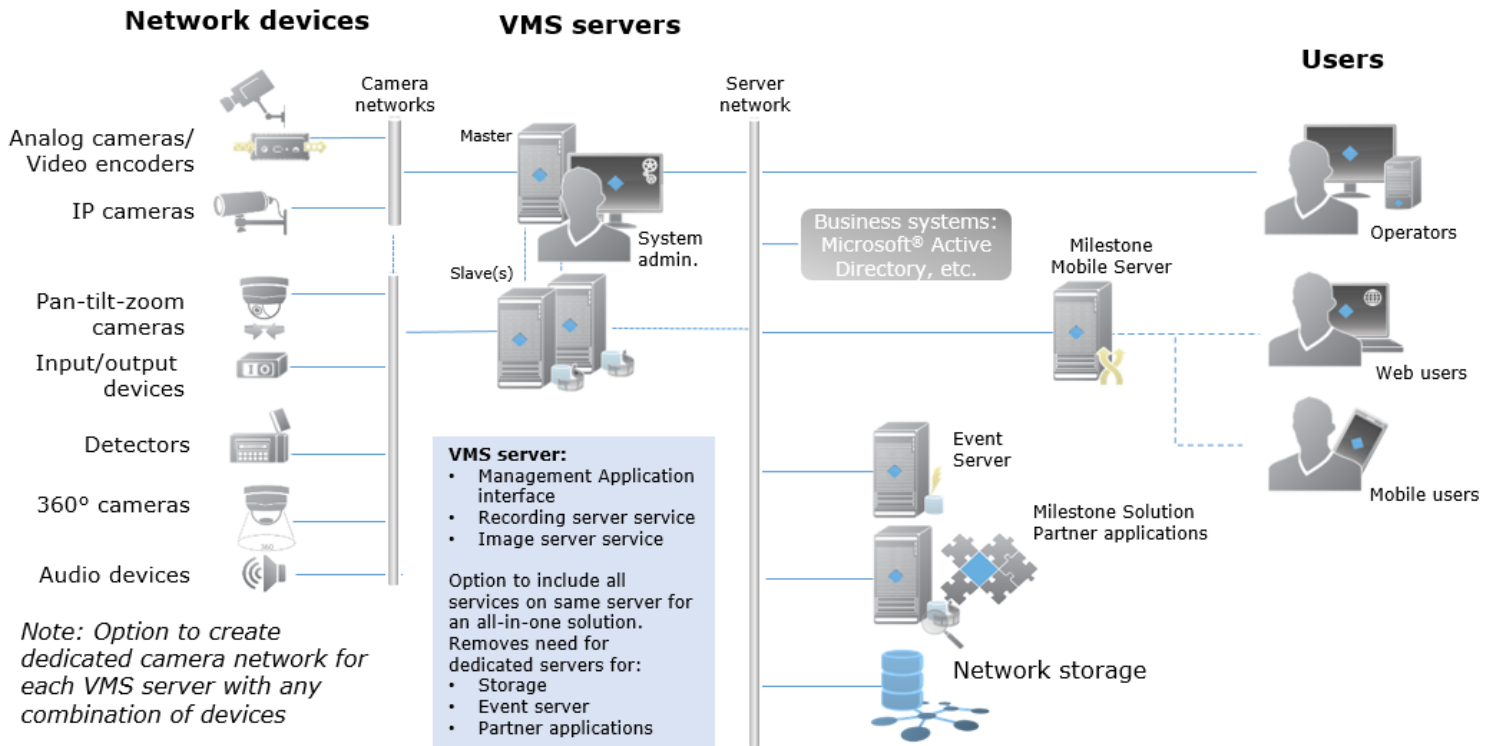
**XProtect Web Client** enables you to connect anywhere through browsers

# XProtect Professional

## Ordering information

SKU	Description
XPPBL	XProtect Professional Base License
XPPCL	XProtect Professional Device License
YXPPCL	1-year Care Plus for device license

## System diagram



### MANAGEMENT APPLICATION

A single management interface provides a single point of access to Recording Servers, Mobile server and Event server. System configuration wizards help add cameras, configure video and recording, adjust motion detection and configure multiple users.

### MOBILE SERVER

Runs as a dedicated service allowing it to be installed with an existing installation or on dedicated hardware for more demanding installations.

### EVENT SERVER

Provides advanced multi-layered maps giving operators interactive access and control of the complete surveillance system. It hosts features for the alarm function and any third-party solution plug-ins.

## Specifications

General	Detail
Type of deployment	Multi-site
Licensing	Perpetual
Max number of cameras	Unrestricted
Max number of cameras per server	320
Max number of recording servers	Unrestricted
Max number of users	Unrestricted
Customer Dashboard	Yes, with Care Plus
Multiple video export format	Yes
Supports all XProtect Clients	Yes
Alarm Manager	Yes
Map function	Yes
Push notification	Yes, with Care Plus
Smart Start set up wizards	Yes

Scalability	Detail
Milestone Interconnect	Remote site
Microsoft Active Directory	Yes
Supports third-party system integration	Yes
Supports XProtect Add-on products	Yes
Cyber security	Detail
Secure HTTPS camera connectivity	Yes
Digital signature on video export	Yes
Disablement of re-exporting	Yes
Dual authorization	Yes

For detailed specifications, please visit [milestonesys.com](http://milestonesys.com)