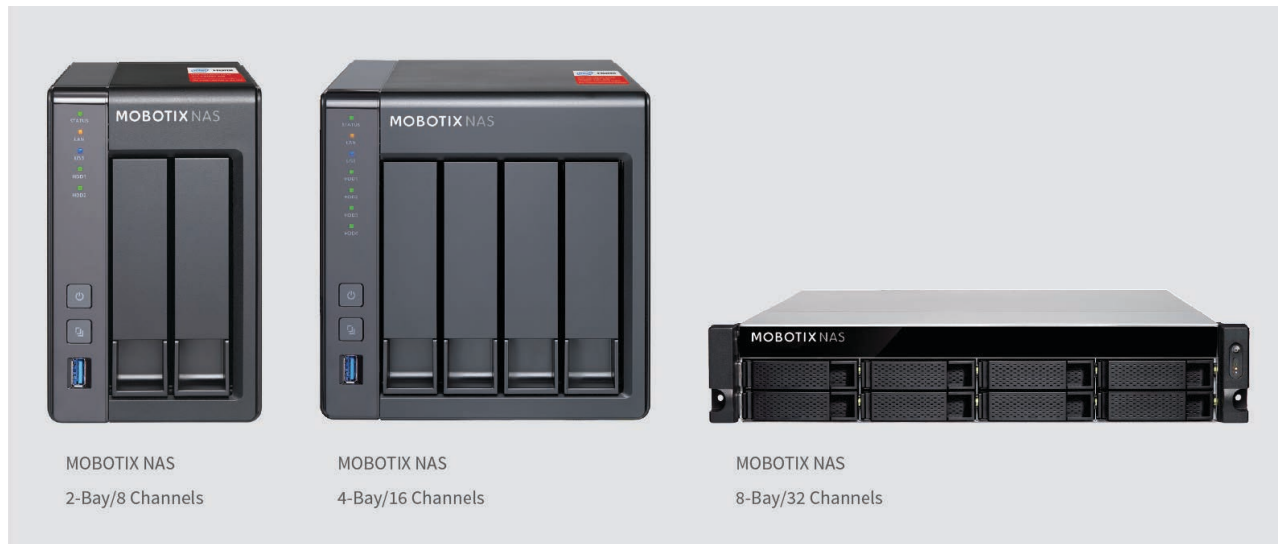


# Installation Guide:

## How to set up a MOBOTIX NAS - MxManagementCenter System



**Important:** This document describes the installation of the following MOBOTIX NAS models:

Product Name	Item Number	Product Label
MOBOTIX NAS 2-Bay/8 Channels	Mx-S-NAS2a-8	251 G
MOBOTIX NAS 4-Bay/16 Channels	Mx-S-NAS4A-16	451 G
MOBOTIX NAS 8-Bay/32 Channels	Mx-S-NAS8A-32	873u G

**Minimum requirements for the software versions:**

- MOBOTIX NAS: Mx-NAS2-4A-4.3.4.0735, Mx-NAS8A-4.3.4.0735, ContainerStation 1.7.2.2502, QVRProServer 1.2.0.0 (see Quick Installer of the MOBOTIX NAS)
- MOBOTIX MOVE: SD1A → MB20181025RS, BC1A/VD1A → MB20181025RS
- MxMC: 2.0

**IMPORTANT:** We recommend updating all involved products to the latest software versions. The relevant software versions for MxMC, MOBOTIX NAS and MOBOTIX MOVE cameras are available for download on our website:

<https://www.mobotix.com/en/support/download-center/software-downloads>

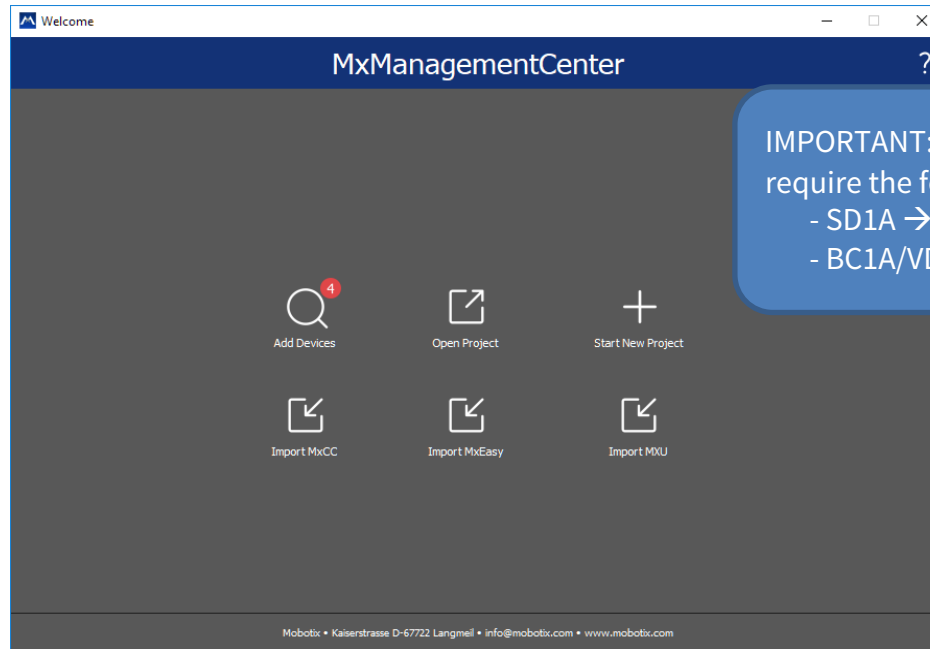
**Video Tutorial:** Additional information is available under the following link:

<https://www.mobotix.com/en/support/download-center/documentation/video-tutorials>

**HDD reference list:** The list is available under the following link:

<https://www.mobotix.com/en/support/download-center/documentation/white-lists>

1. Start the **Welcome Wizard** by clicking in the menu bar on **File > Welcome**.



2. Click on **Add Devices**. Then select the desired ONVIF S compliant cameras to be added to MxMC.  
**Note:** It can take up to 10 minutes for an ONVIF camera to be found. As an alternative, you can add the cameras manually to the camera list by clicking the "+" button in the control bar.
3. Enter the access data. This requires the access data of an ONVIF administrator user. For MOBOTIX MOVE cameras, the GUI admin is also the ONVIF admin. For other models, such as Axis, there are separate roles for GUI Admin and ONVIF Administrator.

MxManagementCenter [Beta]

### Configuration - MOBOTIX MOVE

#### Preferences

**MOBOTIX NAS** +

Name:

The name of this path is displayed in the camera management when choosing a recording server.

Type:

Local: Uses a folder or a connected network drive on this computer.  
Network Share: Directly accesses a shared folder on a different computer.  
MOBOTIX NAS: Directly accesses a shared folder on a MOBOTIX NAS.  
MOBOTIX NAS (ONVIF): Accesses ONVIF recordings on a MOBOTIX NAS.

File Server (IP):  Port:   Use SSL

IP address or DNS name of the file server.

User Name:

Password:

Access data for the file server.

<http://10.0.0.254:8080>

Test Server Settings:

1. Type: MOBOTIX NAS (ONVIF)
2. IP of the MOBOTIX NAS
3. User Name and Password
4. Click on the “Test” button
5. Click on the “Apply” button

6. Clicking on the link opens a browser window with the configuration interface of the MOBOTIX NAS.



1. Select Recording Storage
2. Create a Recording Space

Recording Storage

## Recording Storage

Overview

Recording Space

Recording Management

Rebuild Recording Index

Advanced Settings

Recording File Explorer

### Recording Space

Specify where to save recorded videos and how many days QVR Pro records normal and event streams.




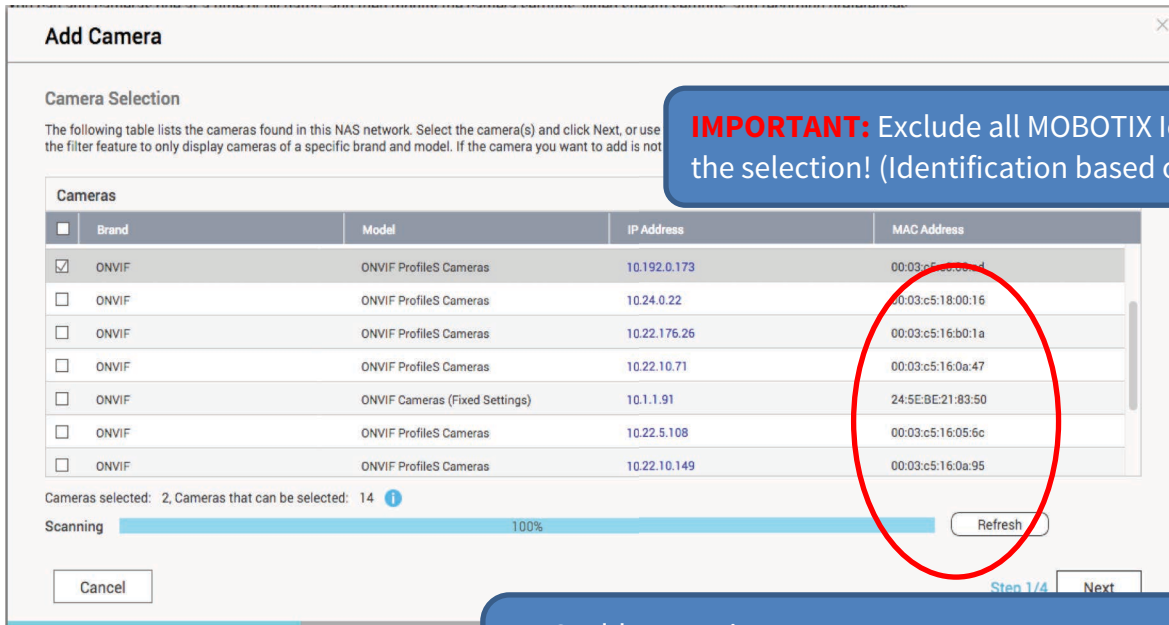
Available NAS storage: **129.00 GB**

Note: To manage the storage space, go to [\[Storage Manager\]](#).

Set the maximum possible size for all recording spaces and leave the overwrite threshold at its default value (95%).

**NOTE:** Wait until the recording space is fully allocated, do **NOT reboot the MOBOTIX NAS** or add cameras before this task is finished!

1. After the recording spaces have been allocated completely, open the **Camera Settings** in QVR Pro. 
2. QVR Pro (Recorder Software) is only suitable for ONVIF cameras. To use the full functionality of Premium MOBOTIX IoT cameras (such as SD card failover and MxPEG+), MxFFS with buffered archives must be used. Therefore, make sure that no MOBOTIX IoT cameras have been selected. You can recognize MOBOTIX IoT cameras by their MAC address. If MOBOTIX IoT cameras have also been selected, deactivate them.



**IMPORTANT:** Exclude all MOBOTIX IoT cameras from the selection! (Identification based on the MAC Address)

Brand	Model	IP Address	MAC Address
<input checked="" type="checkbox"/>	ONVIF ProfileS Cameras	10.192.0.173	00:03:c5:16:0a:47
<input type="checkbox"/>	ONVIF ProfileS Cameras	10.24.0.22	00:03:c5:18:00:16
<input type="checkbox"/>	ONVIF ProfileS Cameras	10.22.176.26	00:03:c5:16:b0:1a
<input type="checkbox"/>	ONVIF ProfileS Cameras	10.22.10.71	00:03:c5:16:0a:47
<input type="checkbox"/>	ONVIF Cameras (Fixed Settings)	10.1.1.91	24:5E:BE:21:83:50
<input type="checkbox"/>	ONVIF ProfileS Cameras	10.22.5.108	00:03:c5:16:05:5c
<input type="checkbox"/>	ONVIF ProfileS Cameras	10.22.10.149	00:03:c5:16:0a:95

Cameras selected: 2, Cameras that can be selected: 14

Scanning 100% Refresh

Cancel Step 1/4 Next

MAC address assignment:

MOBOTIX IoT cameras: 00:03:C5.16.XX.XX

MOBOTIX MOVE cameras : 00:03.C5.C0.XX.XX

## Step 4 – Add Camera (2)

- In the next window, check whether MOBOTIX NAS has recognized the desired camera brand and IP address. Continue by adding any missing camera data, such as:

**Name:** Enter a unique description; the name is used in QVR Pro only.


**Account / Password:** The access data must correspond to an ONVIF admin user for ONVIF S cameras.

**Add Camera**


**Edit Camera Selection**

The following table lists the cameras selected in Step 1. From here, you can edit the camera connection information or manually add other cameras. batch editing tasks such as deleting, logging in, and testing.

Selected Cameras

<input type="checkbox"/>	Preview	Name	Brand	Model	IP Address	Port	RTSP Port	Account	
<input type="checkbox"/>		ONVIF_ONVIF	ONVIF	ONVIF Pr	10.1.6.14	80	554		<input type="button" value="Test"/>

ONVIF ProfileS Cameras

Cameras selected: 1 , Cameras that can be selected: 11 

Step 2/4

- 1. Name:** Enter unique description
- 2. Enter Account and Password**
- 3. Click the Test button** for each camera

4. In the next step of the wizard you define the recording settings (normal = continuous recording, event recording = event controlled).

**Note:** When the camera is added, two profiles (MxHiQuality for HiRes and MxLoQuality for LoRes) are automatically created in MxMC. The values set in MxMC for MxHiQuality are automatically transferred to the MOBOTIX NAS.

**Add Camera** [Close]

Profile setting MxHiQuality

Recording Settings	Recording Streams
<input checked="" type="checkbox"/> Enable Recording	<input checked="" type="checkbox"/> MxHiQuality [All Day] + [Edit] [Delete]
Normal Recording	<input type="checkbox"/> MxHiQuality
Event Recording [Edit] [Info]	<input type="checkbox"/> MxHiQuality
<input type="checkbox"/> Enable audio recording on this camera	<input checked="" type="radio"/> Stream1 [All Day] + [Edit] [Delete]
<input type="checkbox"/> Edge Recording Recovery [Info]	<input checked="" type="radio"/> MxHiQuality [All Day] + [Edit] [Delete]
<input type="checkbox"/> Enable Autosnap [Edit]	

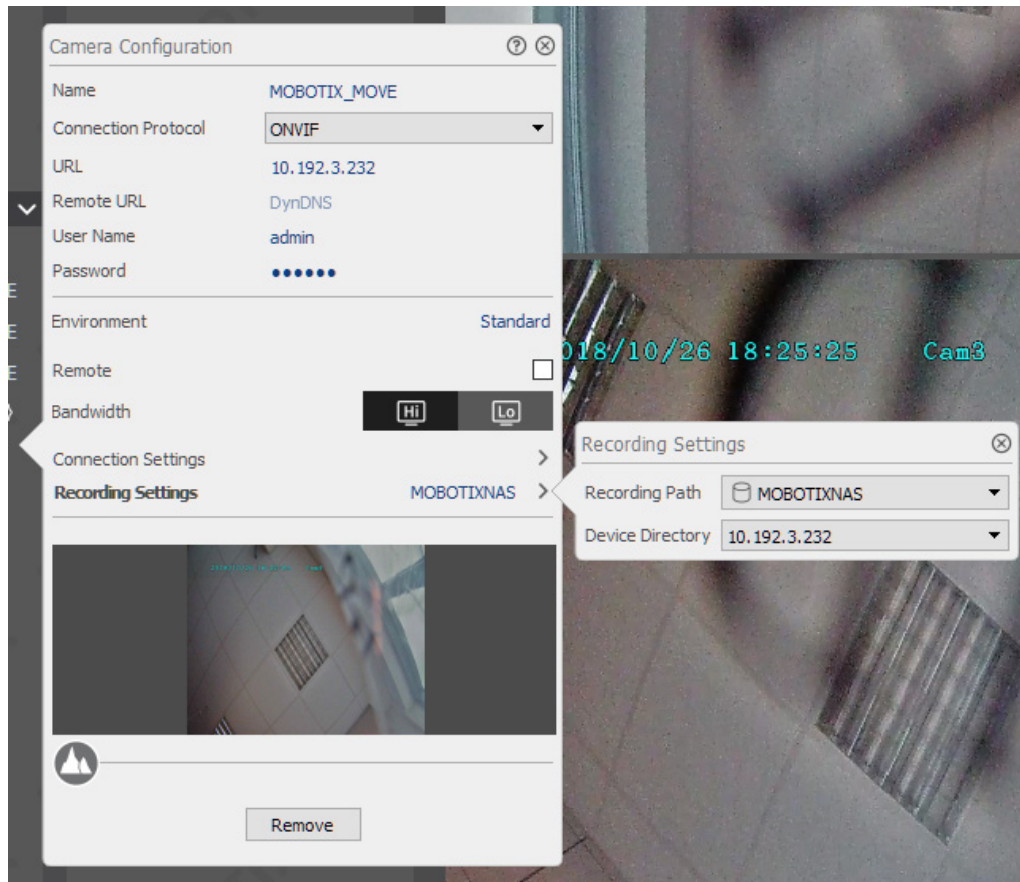
The parallel operation of "Normal Recording" and "Event Recording" is currently not supported. "Normal operation" is recommended for PTZ cameras.

Cancel [Step 3/4] Back Next



1. Finish and then close the wizard.
2. In the Camera Settings window, check that all cameras have been added to the QVR Pro software.
3. Wait some time (~5 min) until the MOBOTIX NAS has connected to the new cameras.

1. In the **Recording Settings** of the MxManagementCenter, select the corresponding **Recording Path** (MOBOTIX NAS). Then make sure that the correct camera IP is specified under **Device Directory**.



2. Now, the camera recordings can be played back via MxManagementCenter.

---

BeyondHumanVision

**MOBOTIX**

MOBOTIX AG  
Kaiserstrasse  
67722 Langmeil  
Germany

+49 6302 9816-0  
info@mobotix.com  
www.mobotix.com

MOBOTIX, the MOBOTIX Logo, MxControlCenter, MxEasy, MxPEG, MxDisplay and MxActivitySensor are trademarks of MOBOTIX AG registered in the European Union, the U.S.A. and in other countries • Subject to change without notice • MOBOTIX do not assume any liability for technical or editorial errors or omissions contained herein • All rights reserved • © MOBOTIX AG