

FAMILY BROCHURE

Elevate DCR Series

Contents

Introduction	3
Elevate Data Centre Rack key features	6
Dimensions	10
Construction	11
Frame	11
Roof	12
Door	13
Airflow Management features	14
Cable Management options	15
Maximum PDU Installation Space	16
DCR 600 mm wide with Airflow Management Pack	18
DCR 800 mm wide with Airflow Management Pack	20
Specification	22
Accessories	24

Elevate Data Centre Rack (DCR series)

The Elevate DCR series forms part of a wider range of passive cabling, rack and containment solutions designed to meet the demands of the high availability, energy efficient, data centre and high-power compute environments.

This brochure aims to introduce the DCR series range, its features and benefits. You will find further details on our website, through your local sales representative or distributor, or better still, come and view the racks at either our London or Birmingham showrooms.

Elevate DCR offers a range of size options, colour choices, multiple airflow and cable management features. These are paired with high load-bearing capacity and an aesthetically attractive design, all supported by an extended 25-year warranty programme when installed with Elevate cabling.

The DCR rack is available in two basic configuration options:

- ✓ DCR Server, where there is no front finger cable management and the front 19" profiles are set at their most forward position.
- ✓ DCR Network, which includes front finger cable management and sets the front 19" profiles further back to accommodate these.

Both designs now feature new-style box baffles with vertical brushes, which can be blanked off with 2U blanking panels or used to host additional equipment.

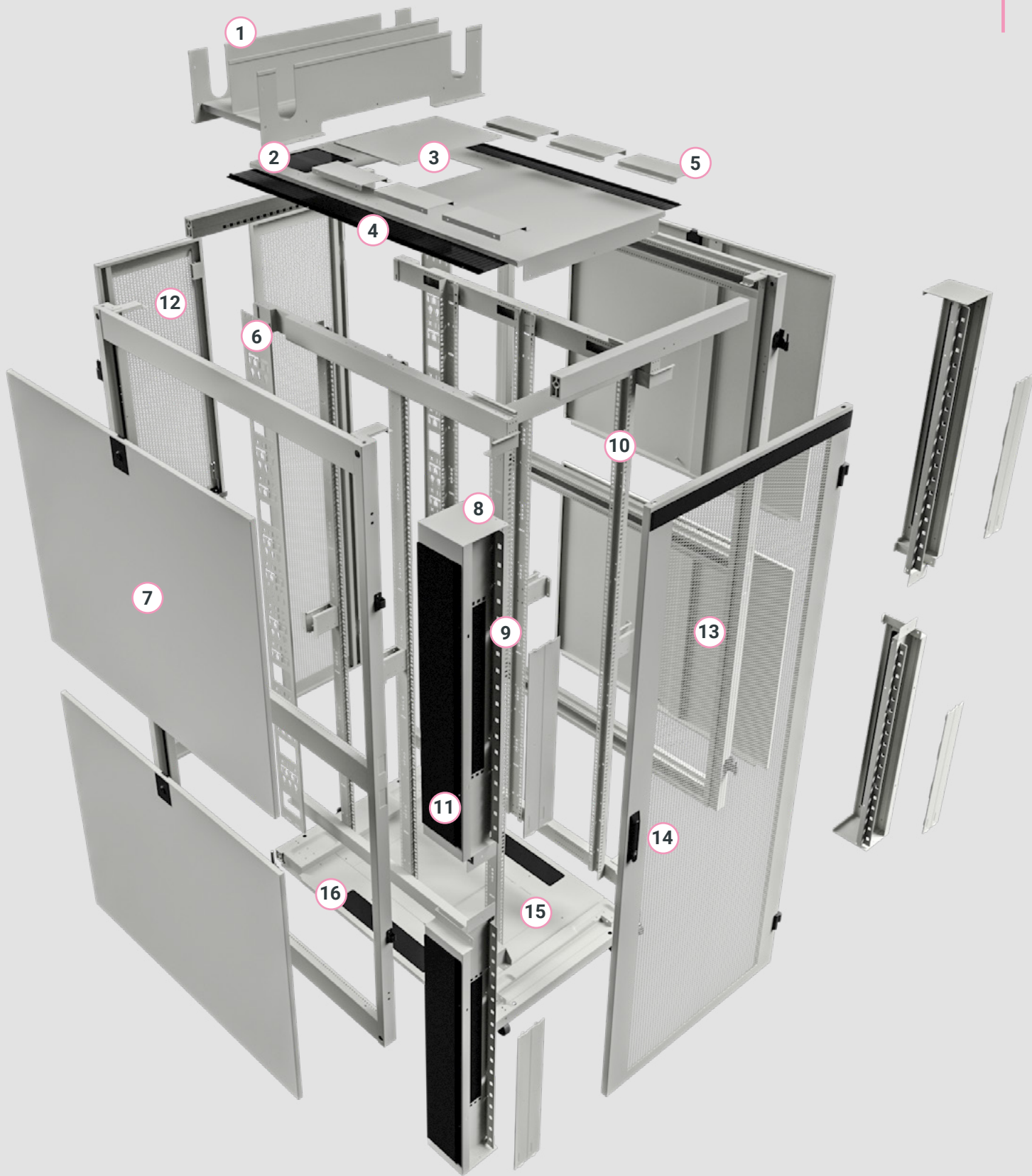
In developing the Elevate brand, we have considered not only the application and mission-critical nature of the DC/HPC market, but also the need to support clients with a highly flexible and responsive supply chain. Our UK assembly enables fast lead times throughout EMEA, customisable configurations, and is matched with sustainable packaging and delivery options. We bring the future faster.

To directly complement the DCR series, the Elevate solution includes hot and cold aisle containment. Through our technology partner nVent, we also offer advanced liquid cooling and high-density intelligent in-rack power distribution units.

Elevate DCR Server Rack Key Features

1. Roof Raceway Options
2. Roof Cable Entry for 64A and 125A PDUs
3. Fan Tray Blanking Plate
4. Roof Cable Entry 32A
5. Roof Blanking Plates - optional
6. PDU Cable Tray
7. Plain Side Panels
8. New box style baffles provide complete seal around 19" profiles with adjustable front baffle plate. No finger management on Server variant (VDPN).
9. Box style baffles feature 2U front brushes cutout, blanked using 2U - 19" panels
10. Adjustable 19" Profiles sitting near the front
11. Side Brushes Blanked
12. 80% Perforated Double Doors
13. 80% Perforated Single Doors
14. Optional Electronic Handles
15. Flexible Base Entry Options
16. Brush Cable Entry in Floor Sides

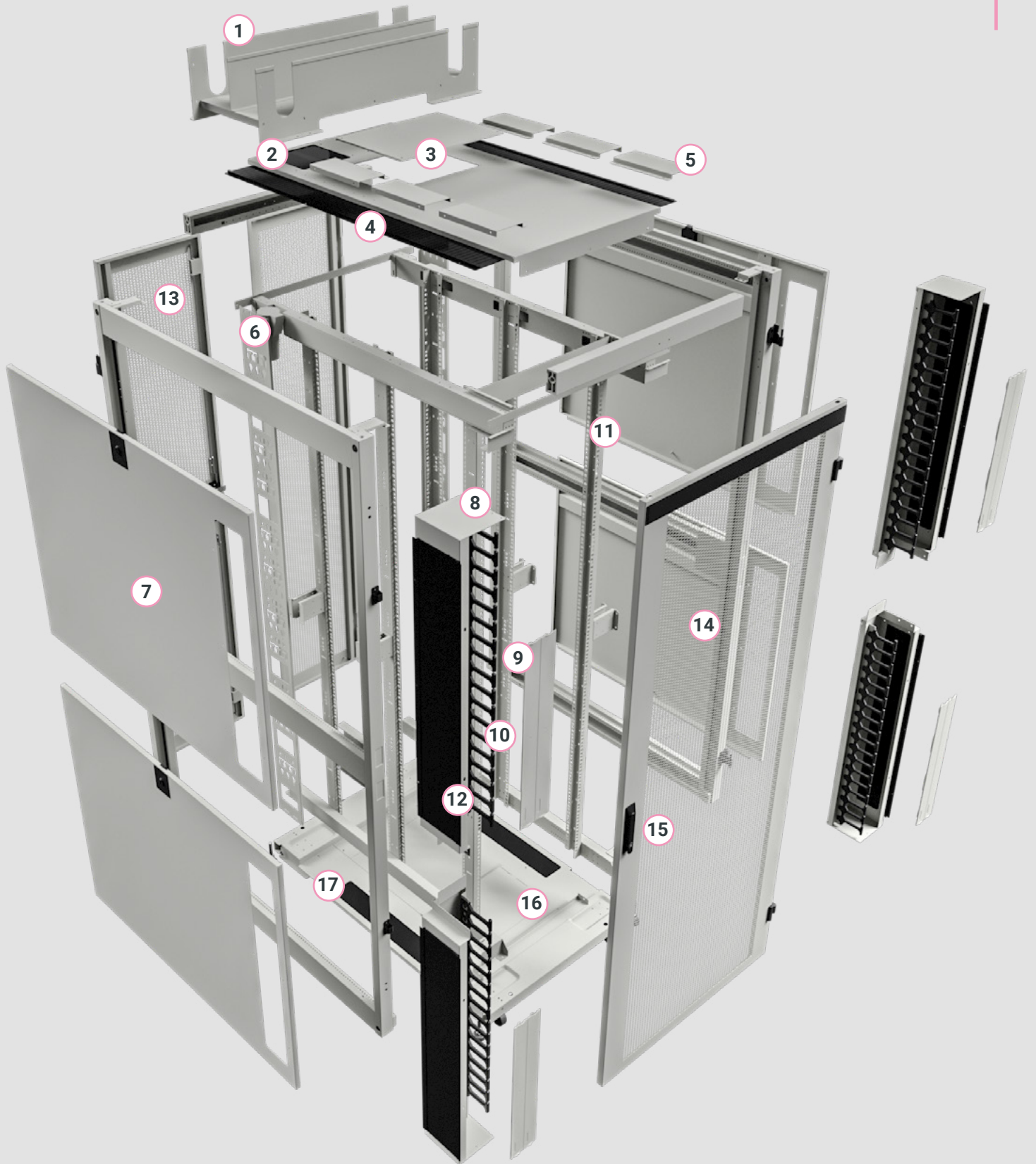
Depth: 1000mm / 1200mm / 1400mm



Elevate DCR Network Rack Key Features

1. Roof Raceway Options
2. Roof Cable Entry for 64A and 125A PDUs
3. Fan Tray Blanking Plate
4. Roof Cable Entry 32A
5. Roof Blanking Plates - optional
6. PDU Cable Tray
7. Side Panels with Brushes Cutout
8. New style airflow management seal around 19" profiles with adjustable front baffle plate. Finger management on Network variant (VDBF)
9. New airflow management with 2U front brushes cutout, which can be blanked using 19" panels
10. Finger Cable Management
11. Adjustable 19" Profiles set further back
12. Side Brushes part of Baffle
13. 80% Perforated Double Doors
14. 80% Perforated Single Doors
15. Optional Electronic Handles
16. Flexible Base Entry Options
17. Brush Cable Entry in Floor Sides

Depth: 1000mm / 1200mm / 1400mm



Data Centre Racks - DCR Series

With this portfolio of pre-configured racks, we cover a wide range of applications to serve most common data centre needs. Combined with a range of accessories, these racks can be further tailored to the client's requirements.

The Elevate Advantage

UK assembly and QA, with stocked specifications typically available for next-day delivery

Optimal airflow management for better energy and equipment performance comes as standard

Compatible with Elevate aisle containment and nVent RDHx and HD intelligent power distribution

Highly customisable to client specification, with short design and lead times

Optional electronic handles are also available for MiFare card access control and remote monitoring.

25-year product warranty as standard when installed with Elevate cabling solutions



DCR Series, 600mm and 800mm wide with airflow management kits included as standard.

Product code no. to be created by adding to Product Base Code, i.e.:

546-47812-VDBF-WH = 47U Rack, 800 mm wide, 1200 mm Deep, Single Vented Front Door, Double Vented Rear Doors, Both Side Panels fitted, Front Finger Cable Management, Colour RAL 9003



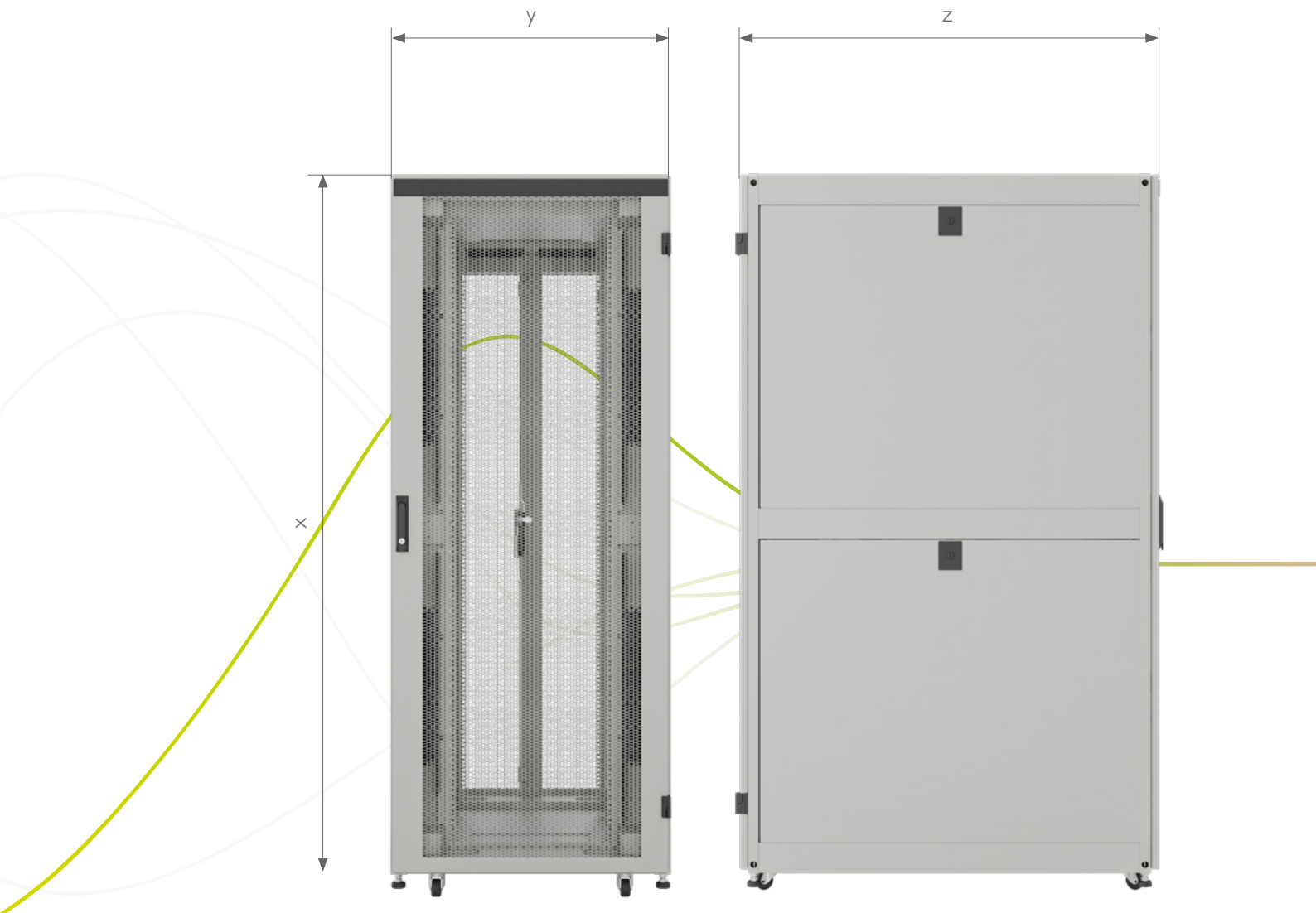
RAL 9003

RAL 9004

Product Base: 546	Height Options			Width Options				Depth Options		Front Door 80% Per- forated	Rear Door 80% Per- forated	Side Panels		Cable Manage- ment		Colour	
	-42	-47	-52	6	8	10	12	14	V (single)	D (double)	B	P	F	N	-BK	-WH	
Part Code:	-42	-47	-52	6	8	10	12	14	V (single)	D (double)	B	P	F	N	-BK	-WH	
Height (U)	42	47	52														
Dimensions (mm)	2000	2220	2440	600	800	1000	1200	1400									
Front door									Single								
Rear door										Double							
Side Panel											Both sides	Plain side panels					
Front Cable Management													Finger	None			
RAL																9004 9003	
Max. load	1500kg when mounted on jacking feet, 2000kg when mounted directly on to floor																
Handles	Standard mechanical swing handle																
Roof layout	Front to back brush strips, both sides, Fan Tray option																
Side Panel Type	Brush Strips included at front edge of panel. Plain side panels for Server model.																
Air Flow Management	Full kit included around 19" profiles																
Castors and Jacking Feet	Included as standard																
Cable Trays	135 mm wide, both sides at the rear																

Dimensions

The standard dimensions in which the DCR series are available are shown below.



x - height: 2000mm (42U), 2220mm (47U), 2440 (52U)

y - width: 600mm, 800mm

z - depth: 1000mm, 1200mm, 1400mm

Construction

DCR - Server Model

- ✓ Front 19" profiles sit further forward
- ✓ No finger management
- ✓ Plain side panels
- ✓ Baffle plate sits near front of rack
- ✓ Baffles now feature 2U size cutouts
- ✓ 2U size cutouts blanked using 101-594, or can be used for extra patch panels or light switches

DCR - Network Model

- ✓ Front 19" profiles sit further back
- ✓ Baffle plate sits further back
- ✓ Includes finger management
- ✓ 2U size cutouts can be blanked using 101-594
- ✓ Brushes can also be removed and equipment installed



Frame

The DCR frame is built around a robust steel construction chassis, providing strong support to the main 19" rails and capable of handling up to 2000 kg of static load when racks are mounted directly onto the floor.

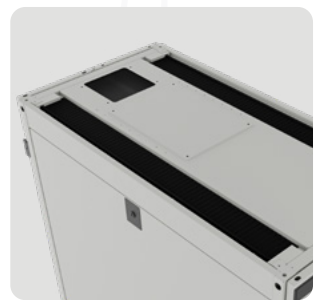
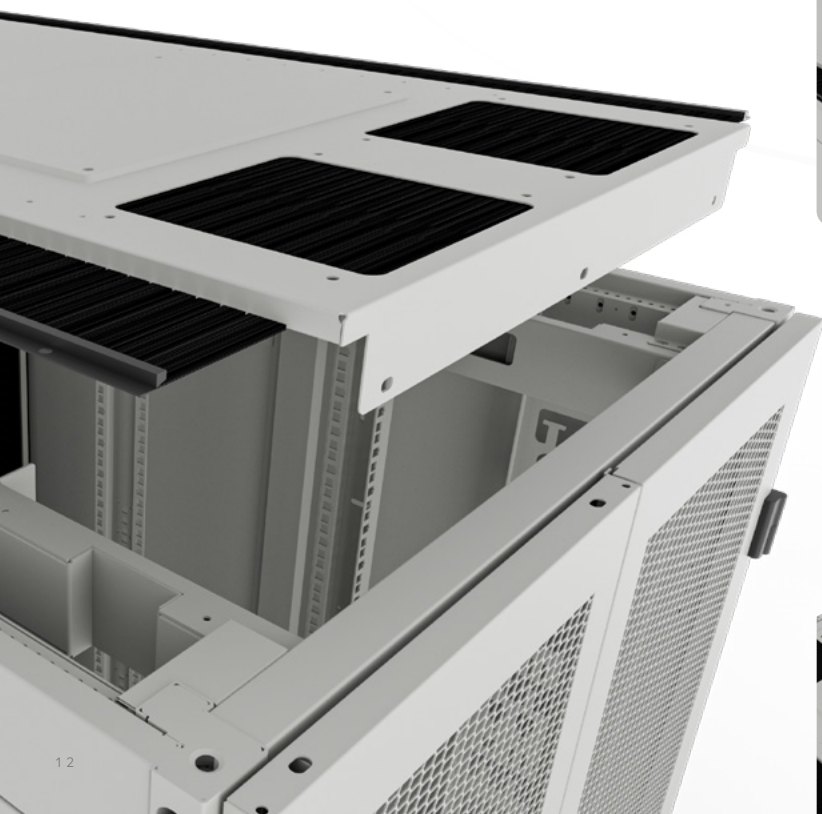
Flexibility is a key feature, with adjustable mounting rail profiles on both the front and rear of the rack, clearly marked for easy positioning. Standard rack profile holes accept M6 cage nuts, which can be quickly installed at any required location.

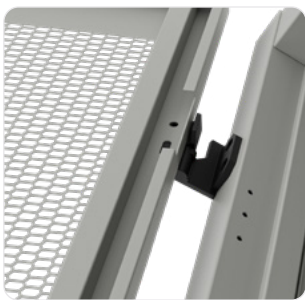
Airflow management baffles are connected to the front profiles and supplied in set positions, tailored to the Server and Network models. Each rack also comes equipped with positioning castors and jacking feet as standard, ensuring stability and ease of installation.

Features

Roof

- ✓ Extra cut-out in the middle for cable management (high-volume), brushes or fan-unit
- ✓ Optional 200mm roof inserts available
- ✓ Optimal accessibility for cabling
- ✓ Improved roof access for 16A, 32A and 64A EN60309 Commando plugs
- ✓ Optional accessories for Roof Raceway channels





Door

- ✓ Toolless door removal and installation
- ✓ Clean and minimalistic design
- ✓ High level perforation at 80%
- ✓ Multipoint point locking as standard
- ✓ Option to upgrade to electronic smart lock with Southco or Tanlock
- ✓ Door reversible (left/right hinged)
- ✓ Door can open 165° in case of bayed racks
- ✓ Door can open 260° in case of stand-alone racks

Airflow Management Features Included

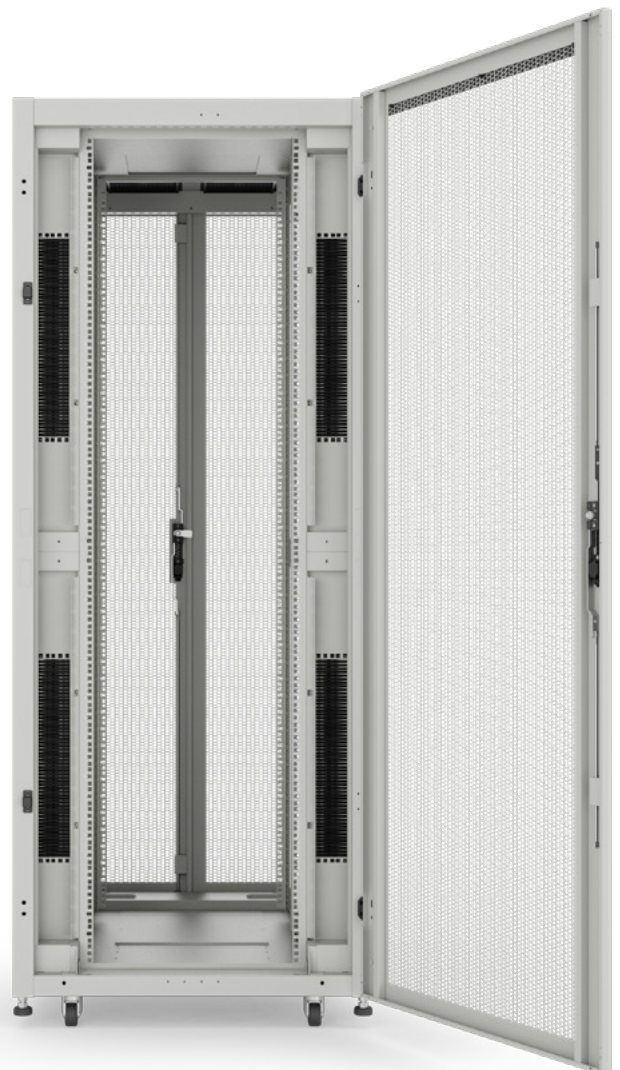
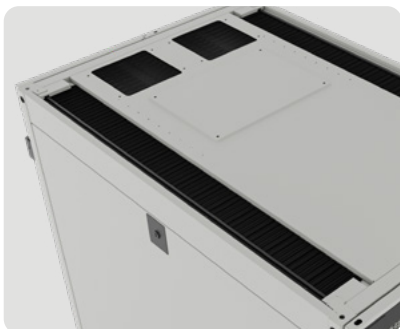
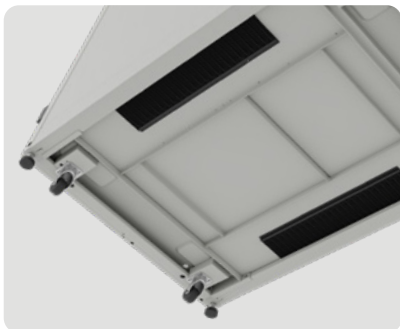
Airflow management baffles are a key design feature of the Elevate DCR series, providing effective control of airflow to ensure cold air is directed through active equipment in the rack.

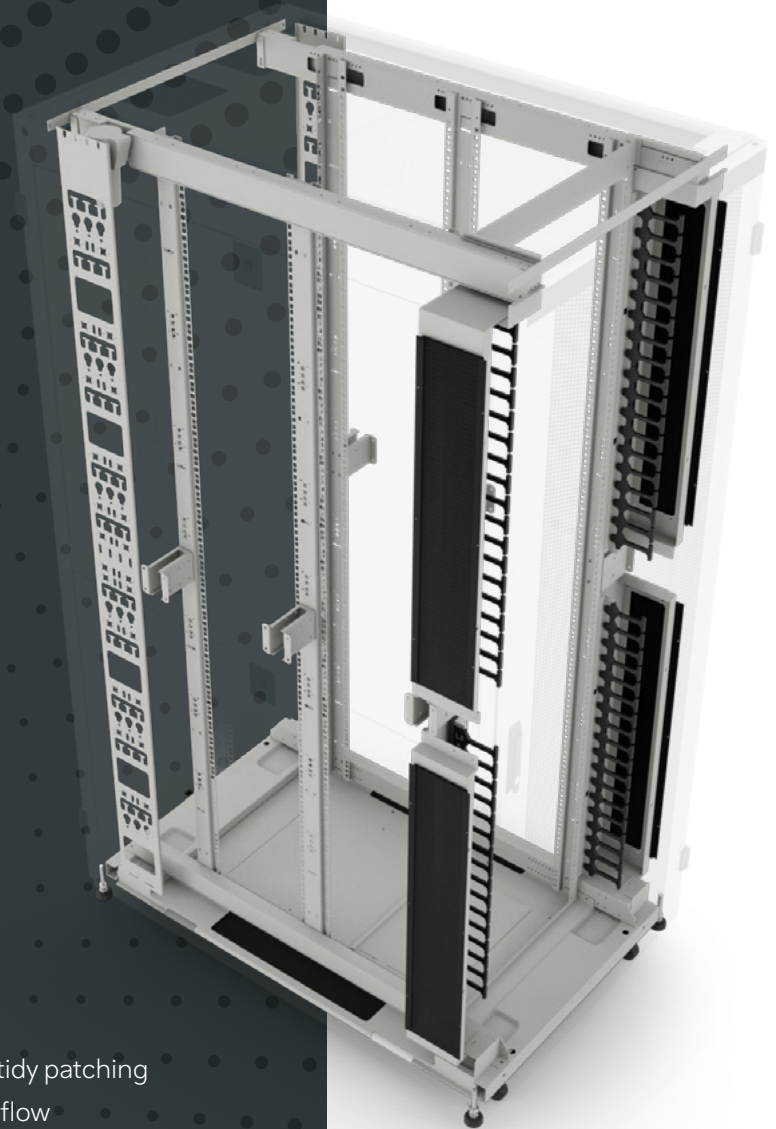
These baffles are attached to the 19" profiles and move in tandem with any adjustments made to the profile positions, maintaining consistent airflow alignment. Upper and lower baffle plates help create a complete seal around installed equipment, while any unused space can be filled with 19" blanking panels.

On the Network Model, vertical finger cable management is fitted to each baffle plate. The centre brush cutout is now 2U in size and features overlapping high-density brushes, allowing cables to pass through while improving aesthetics and reducing airflow disruption caused by installed cabling.

On the Server Model, if the openings are not required, they can be blanked using part number 101-594 or used for lightweight equipment such as patch panels.

- ✓ Design ensures an effective barrier to cold airflow
- ✓ Improves efficiency by guiding cold air through active equipment
- ✓ Fully adjustable to suit customer rack configurations





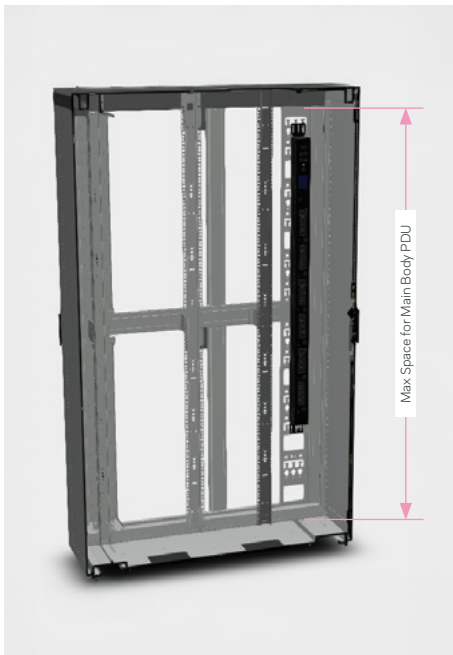
Cable Management Options

- ✓ Finger cable management allows for tidy patching and helps minimise interruption to airflow
- ✓ Provides cable management from top to bottom of the rack
- ✓ Supports cabling fed through baffle brush openings or side panel openings
- ✓ PDU cable tray at rear supports cable management into the rack

Models may differ slightly from final products



Maximum PDU Installation Space

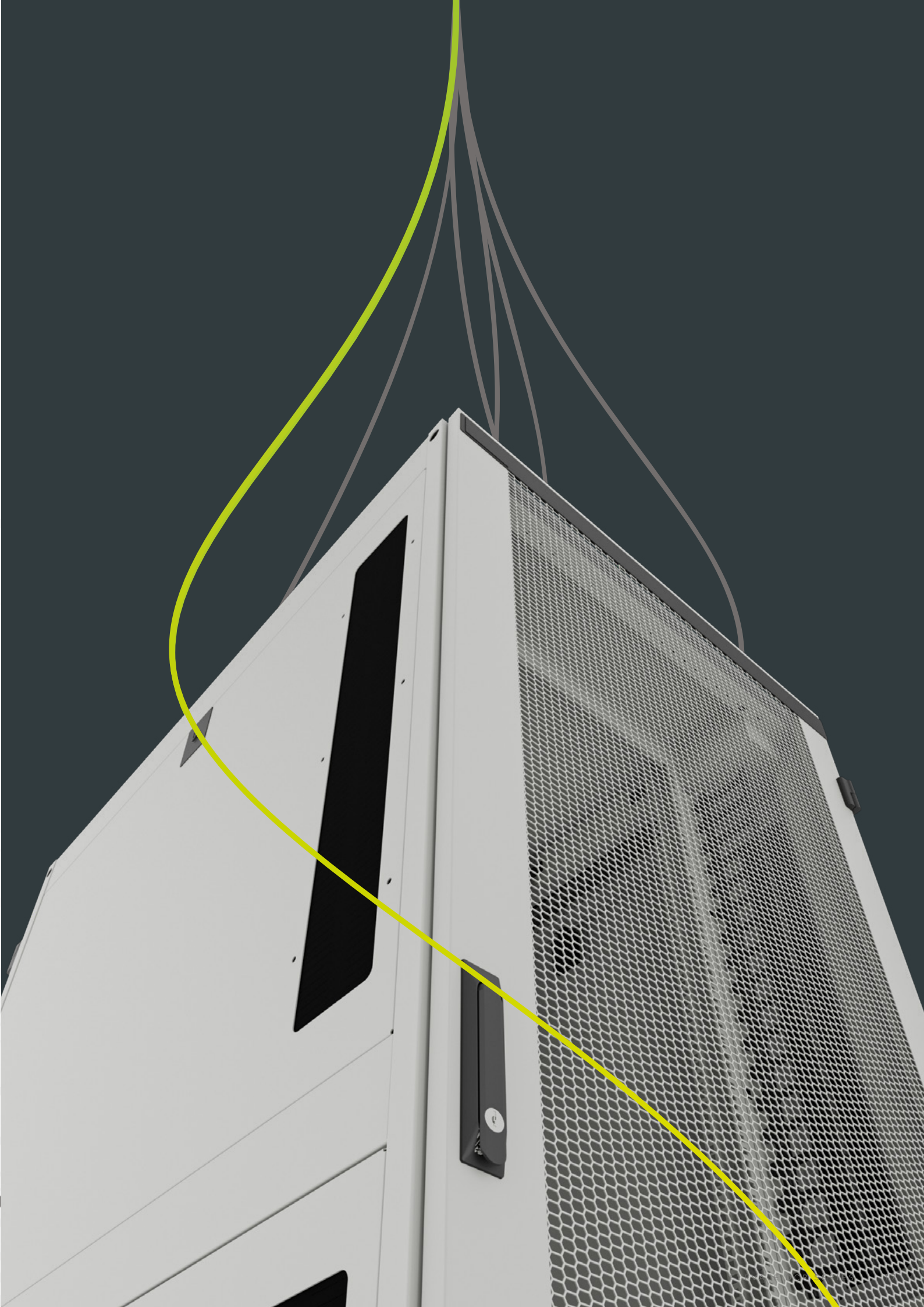


As power requirements within racks continue to increase, modern PDUs are becoming longer in overall length, which can present challenges during installation. Elevate DCR racks are designed to accommodate these demands, with defined maximum internal space allowances for the main body of the PDU based on rack height.

DCR Series - PDU Heights

Rack U Height	Available PDU Space
42	1800 mm
47	2020 mm
52	2240 mm





DCR Series, 600 mm wide - Network Model

Stand-alone rack Signal White RAL 9003	546-42610-VDBF-WH 546-47610-VDBF-WH 546-52610-VDBF-WH	546-42612-VDBF-WH 546-47612-VDBF-WH 546-52612-VDBF-WH	546-42614-VDBF-WH 546-47614-VDBF-WH 546-52614-VDBF-WH
Stand-alone rack Signal Black RAL 9004	546-42610-VDBF-BK 546-47610-VDBF-BK 546-52610-VDBF-BK	546-42612-VDBF-BK 546-47612-VDBF-BK 546-52612-VDBF-BK	546-42614-VDBF-BK 546-47614-VDBF-BK 546-52614-VDBF-BK
Height (U)	42 / 47 / 52	42 / 47 / 52	42 / 47 / 52
Height (mm)	2000, 2220, 2440	2000, 2220, 2440	2000, 2220, 2440
Width (mm)	600	600	600
Depth (mm)	1000	1200	1400
Front Door	80% perforated single	80% perforated single	80% perforated single
Rear Door	80% perforated double	80% perforated double	80% perforated double
Max Load (static)	2000kg*	2000kg*	2000kg*
Security	3-point locking	3-point locking	3-point locking
Roof Layout	2 side long brush strips	2 side long brush strips	2 side long brush strips
19-inch Profiles	4 pieces coloured to rack	4 pieces coloured to rack	4 pieces coloured to rack
Castors and Feet	Included as standard	Included as standard	Included as standard
Delivered with the Rack	M6 x 20 Cage nuts & screws	M6 x 20 Cage nuts & screws	M6 x 20 Cage nuts & screws
Cable Management	Yes	Yes	Yes
Side Panels	Brushes	Brushes	Brushes

*Where Castors and Jacking feet not used





DCR Series, 600 mm wide - Server Model

Stand-alone rack Signal White RAL 9003	546-42610-VDPN-WH 546-47610-VDPN-WH 546-52610-VDPN-WH	546-42612-VDPN-WH 546-47612-VDPN-WH 546-52612-VDPN-WH	546-42614-VDPN-WH 546-47614-VDPN-WH 546-52614-VDPN-WH
Stand-alone rack Signal Black RAL 9004	546-42610-VDPN-BK 546-47610-VDPN-BK 546-52610-VDPN-BK	546-42612-VDPN-BK 546-47612-VDPN-BK 546-52612-VDPN-BK	546-42614-VDPN-BK 546-47614-VDPN-BK 546-52614-VDPN-BK
Height (U)	42 / 47 / 52	42 / 47 / 52	42 / 47 / 52
Height (mm)	2000, 2220, 2440	2000, 2220, 2440	2000, 2220, 2440
Width (mm)	600	600	600
Depth (mm)	1000	1200	1400
Front Door	80% perforated single	80% perforated single	80% perforated single
Rear Door	80% perforated double	80% perforated double	80% perforated double
Max Load (static)	2000kg*	2000kg*	2000kg*
Security	3-point locking	3-point locking	3-point locking
Roof Layout	2 side long brush strips	2 side long brush strips	2 side long brush strips
19-inch Profiles	4 pieces coloured to rack	4 pieces coloured to rack	4 pieces coloured to rack
Castors and Feet	Included as standard	Included as standard	Included as standard
Delivered with the Rack	M6 x 20 Cage nuts & screws	M6 x 20 Cage nuts & screws	M6 x 20 Cage nuts & screws
Cable Management	No	No	No
Side Panels	Plain	Plain	Plain

*Where Castors and Jacking feet not used

DCR Series, 800 mm wide - Network Model

Stand-alone rack Signal White RAL 9003	546-42810-VDBF-WH 546-47810-VDBF-WH 546-52810-VDBF-WH	546-42812-VDBF-WH 546-47812-VDBF-WH 546-52812-VDBF-WH	546-42814-VDBF-WH 546-47814-VDBF-WH 546-52814-VDBF-WH
Stand-alone rack Signal Black RAL 9004	546-42810-VDBF-BK 546-47810-VDBF-BK 546-52810-VDBF-BK	546-42812-VDBF-BK 546-47812-VDBF-BK 546-52812-VDBF-BK	546-42814-VDBF-BK 546-47814-VDBF-BK 546-52814-VDBF-BK
Height (U)	42 / 47 / 52	42 / 47 / 52	42 / 47 / 52
Height (mm)	2000, 2220, 2440	2000, 2220, 2440	2000, 2220, 2440
Width (mm)	600	600	600
Depth (mm)	1000	1200	1400
Front Door	80% perforated single	80% perforated single	80% perforated single
Rear Door	80% perforated double	80% perforated double	80% perforated double
Max Load (static)	2000kg*	2000kg*	2000kg*
Security	3-point locking	3-point locking	3-point locking
Roof Layout	2 side long brush strips	2 side long brush strips	2 side long brush strips
19-inch Profiles	4 pieces coloured to rack	4 pieces coloured to rack	4 pieces coloured to rack
Castors and Feet	Included as standard	Included as standard	Included as standard
Delivered with the Rack	M6 x 20 Cage nuts & screws	M6 x 20 Cage nuts & screws	M6 x 20 Cage nuts & screws
Cable Management	Yes	Yes	Yes
Side Panels	Brushes	Brushes	Brushes

*Where Castors and Jacking feet not used





DCR Series, 800 mm wide - Server Model

Stand-alone rack Signal White RAL 9003	546-42810-VDPN-WH 546-47810-VDPN-WH 546-52810-VDPN-WH	546-42812-VDPN-WH 546-47812-VDPN-WH 546-52812-VDPN-WH	546-42814-VDPN-WH 546-47814-VDPN-WH 546-52814-VDPN-WH
Stand-alone rack Signal Black RAL 9004	546-42810-VDPN-BK 546-47810-VDPN-BK 546-52810-VDPN-BK	546-42812-VDPN-BK 546-47812-VDPN-BK 546-52812-VDPN-BK	546-42814-VDPN-BK 546-47814-VDPN-BK 546-52814-VDPN-BK
Height (U)	42 / 47 / 52	42 / 47 / 52	42 / 47 / 52
Height (mm)	2000, 2220, 2440	2000, 2220, 2440	2000, 2220, 2440
Width (mm)	600	600	600
Depth (mm)	1000	1200	1400
Front Door	80% perforated single	80% perforated single	80% perforated single
Rear Door	80% perforated double	80% perforated double	80% perforated double
Max Load (static)	2000kg*	2000kg*	2000kg*
Security	3-point locking	3-point locking	3-point locking
Roof Layout	2 side long brush strips	2 side long brush strips	2 side long brush strips
19-inch Profiles	4 pieces coloured to rack	4 pieces coloured to rack	4 pieces coloured to rack
Castors and Feet	Included as standard	Included as standard	Included as standard
Delivered with the Rack	M6 x 20 Cage nuts & screws	M6 x 20 Cage nuts & screws	M6 x 20 Cage nuts & screws
Cable Management	No	No	No
Side Panels	Plain	Plain	Plain

*Where Castors and Jacking feet not used

Specification

The Elevate DCR Series are perfectly suited for the installation of high-density compute, networking, cabling and storage equipment.

Dimensions	Height (U)	42 / 47 / 52
	Height (mm)	2000, 2220 or 2440
	Width (mm)	600 or 800
	Depth (mm)	1000, 1200 or 1400
General	Colour	RAL 9003 White, 9004 Black
	Static Load capacity (kg)	1500 or 2000 if direct to floor
	Earthing	Use 544-006 Kit
	IP grade	IP20
	Standards	IEC-60297-2, ANSI/EIA RS310-D
Interior	19 Inch profiles	4 pcs, 2mm Steel, Powder coated
	Adjustability Depth	Fully adjustable with depth indicators
	U Marking	Bi-directional sequential marking
	Position Front Profiles	Network Model: 174mm to front Server Model: 82mm to front
	Position Rear Profiles (1000D)	Default at 532mm Max, 600w 532mm, 800w 732mm
	Position Rear Profiles (1200D)	Default at 732mm, max 972mm
Frame	Material	Steel Frame
	Finishing	Powder Coated
Front/rear closure	Front Door	80% perforated single front door
	Rear Door	80% perforated double rear door
	Security	2-point front locking, 3-point rear locking with cylinder lock
	Material	Steel
	Finishing	Powder Coated
	Hinges	Reversable hinges
Side Panel	Features	Quick slam latch, cable brushes, or plain
	Finishing	Powder Coated
Roof	Features	Side length 90mm brush strips
	Finishing	Powder Coated
	Accessories	Fan Tray, Cable Raceway, Brush Strip covers



Accessories



INCLUDED

Castors and Transport Castors

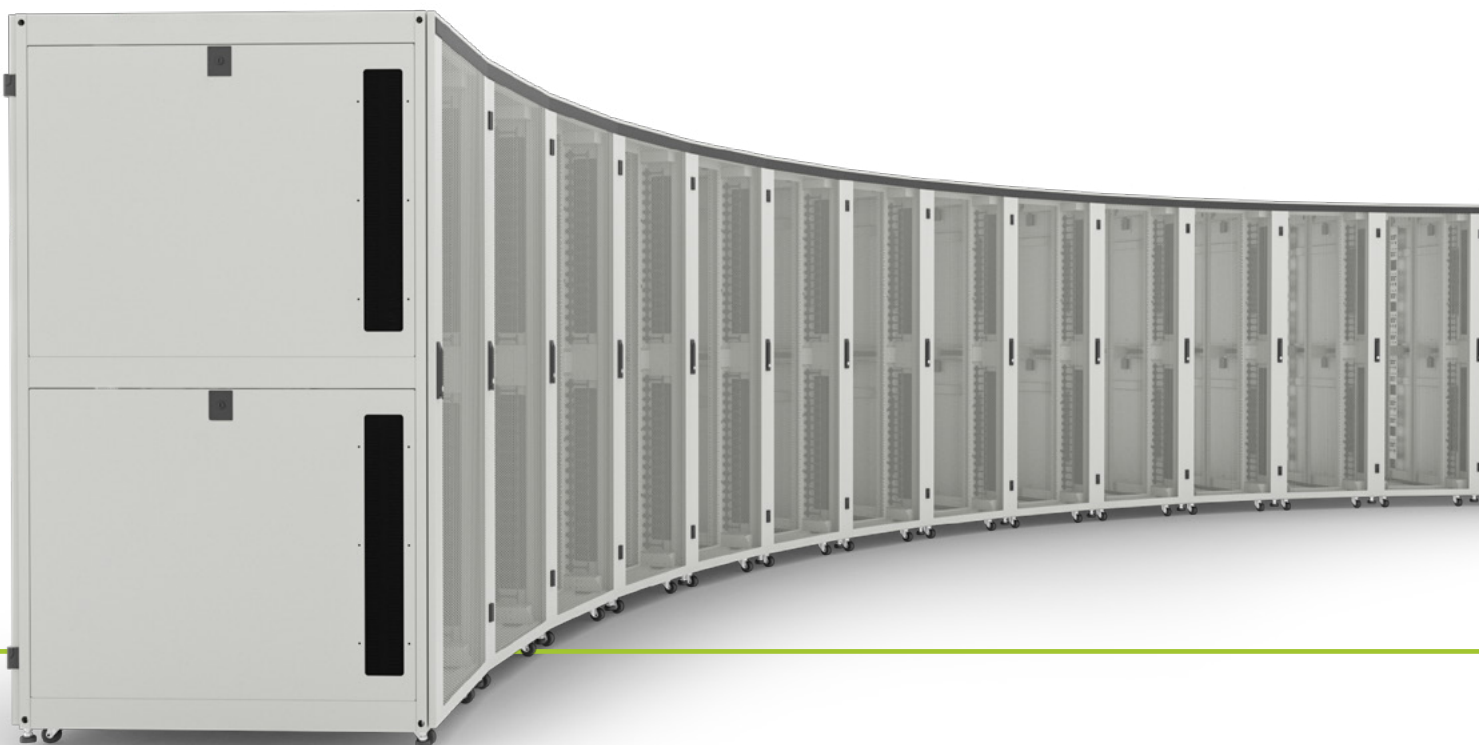
Castors are included with the rack to allow easy manoeuvring and positioning prior to full installation. The front two wheels are lockable for stability once in place.



INCLUDED

Baying Kits

Baying kits, included with the racks, are required to connect racks together. These external connector plates screw onto the outsides of the structural uprights. For secure installation, make at least two connections on both the front and back planes.





OPTIONAL

Earth Rails

The Earth Bar kit, supplied with isolation mounts, is designed to mount either onto the vertical mounting angle or the side of the rack. It provides an easy way to ensure all active equipment is properly grounded. The kit supports 1U rack mounting or flexible positioning anywhere on the rack and can be used with part number EBL20 clamps.



OPTIONAL

Tool-Free Quick-Fix Blanking for Airflow Management

The front plate creates an airtight seal on the 19-inch surface and has been designed for quick, tool-free installation. A special plastic connector secures the plate between the 19-inch profiles, allowing it to be fitted in seconds without any tools.



OPTIONAL

Electronic Handles

An electronic handle and lock kit is available for the DCR series. This upgrade uses the H3-EM-66-100 Southco Lock with a 3-point locking swing-style handle and fits to the existing rods supplied with the rack, both front and back.

Elevate Aisle Containment



nVent Cooling



ELEVATE

Future Faster

elevate@excel-networking.com

elevate.excel-networking.com