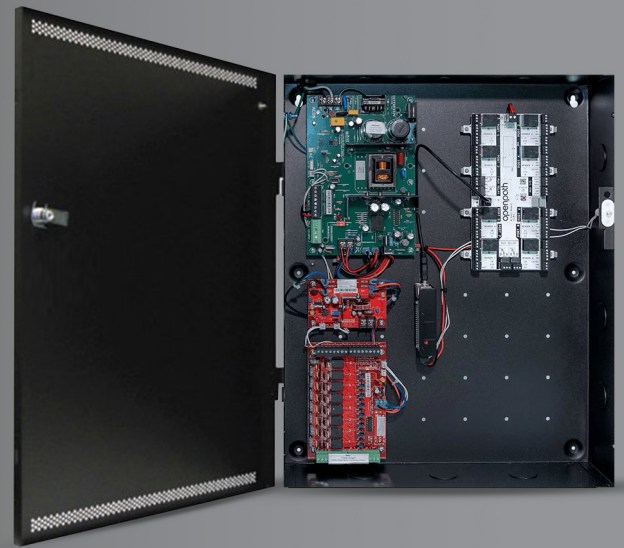


# AVIGILON™

## 12/24V 8-DOOR CORE SERIES SMART HUB

EXPANDABLE ACCESS CONTROL FOR THE MODERN WORKPLACE



Smart Hubs are shipped unassembled. Some hardware may show the Openpath logo.

### SYS-8ENT-DVE2

Seamlessly expand your access control with our modular Core Series Smart Hub that features configurable inputs, encryption at every level and powerful, cloud-based management to enable secure, dynamic access control for any facility. The Smart Hub connects to expansion boards that include ports for 8 Avigilon Smart Readers, Request to Exit (REX) inputs, and Contact Sensors. It uses RS-485 wiring to connect to the Smart Readers and is powered by a built-in 12/24VDC power supply.



#### CLOUDSYNC OFFLINE FUNCTIONALITY

CloudSync is our offline-first technology, which allows the system to operate even if your internet connection goes down.



#### PREMIUM HARDWARE FOR BEST PERFORMANCE

The Smart Hub features a future-proof Access Control Core that securely makes all entry decisions. It features a 12/24VDC power supply and expansion boards.



#### EASY MANAGEMENT WITH SMART MONITORING

Network and device monitoring systems built in to ensure a smooth experience for our users, with remote diagnostic and troubleshooting capabilities to resolve any issues with ease.



#### 100% REMOTE CLOUD MANAGEMENT

Do more with less by securely and easily connecting to the cloud for remote system management, diagnostics, and communication.



#### HASSLE-FREE INSTALLATION

Plug-and-play design allows for easy expansion, customization and mounting, with interoperability to integrate with physical on-premise systems and logical software-based systems.



#### LIFETIME WARRANTY

Take advantage of the peace of mind knowing that Avigilon stands behind its access control hardware with a lifetime warranty, guaranteeing the ultimate quality for your security solution.

For more information, visit [avigilon.com/access-control/12-24v-8-door-core-series-smart-hub](https://avigilon.com/access-control/12-24v-8-door-core-series-smart-hub).

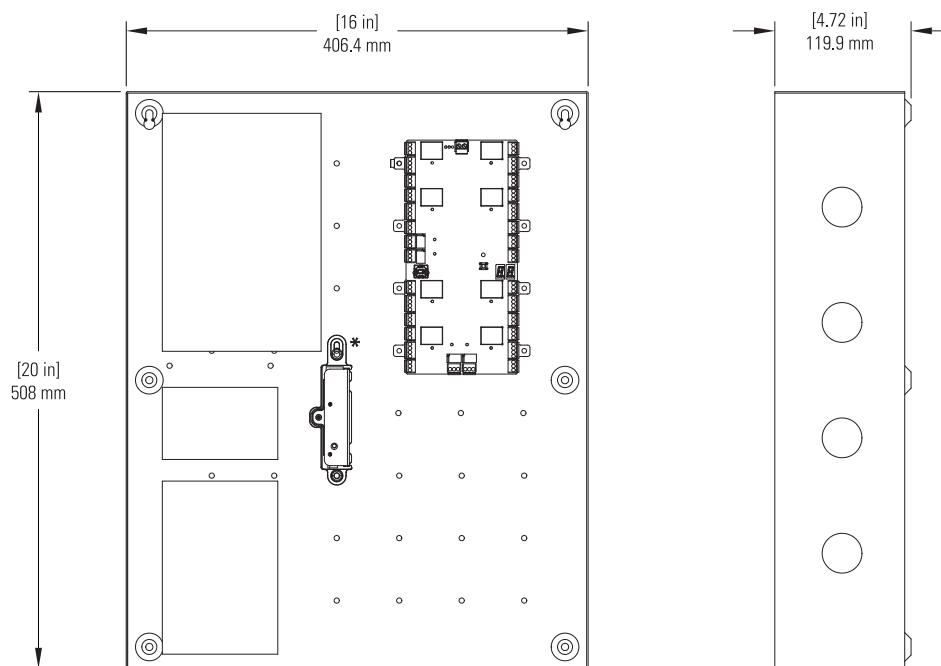
# SPECIFICATIONS

## SYSTEM

Access Control	Up to 8 Avigilon Smart Readers
Door Relays	8 relays, 5A @ 24VDC (resistive)
Auxiliary Relays	4 relays, 1A @ 24VDC 4 auxiliary relays and 4 configurable auxiliary I/O pins provide extra inputs and outputs, and allow additional sensors or Wiegand devices
Avigilon Readers	Up to 8 Avigilon Smart Readers Uses industry standard RS-485 signaling to communicate with Avigilon readers over standard wiring
Communication Ports	10/100/1000 baseT Ethernet; USB port
REX and Contact Sensors	8 REX and 8 contact sensor inputs with EOL monitoring, nominal 5VDC, 1kohm to each input
Auxiliary I/O	4 input/output lines with EOL monitoring
Power Supply	Up to 4A@12V and 2A@24V available for locking hardware
Backup Battery	Use two 12VDC sealed lead acid (SLA) or gel cell batteries in series (not included)

## MECHANICAL

### Dimensions



\* Use of mounting bracket is optional

Weight	Approx. 10 lbs (4.5 kg)
Power Supply	LifeSafety Power® E2 enclosure pre-installed with 24V FPV6 Power Supply, C8 Power Control Module, and B100 Secondary Voltage Module
Wiring	Uses RS-485 wiring to connect to the Avigilon Smart Readers EOL monitoring with single or double termination on all REX, Contact, and Auxiliary inputs supported with user-installed 1k resistors

## ELECTRICAL

Operating Voltage 120VAC, 208/230VAC with cuttable jumper

Operating Current 3.7Amps max.

## ENVIRONMENTAL

Operating Temperature 0°C to 50°C (32°F to 122°F)

Operating Humidity 5% to 85% relative, non-condensing

## CERTIFICATIONS

CE, IC, FCC, RCM, UL294

# ORDERING INFORMATION

PART NUMBER	DESCRIPTION
-------------	-------------

SYS-8ENT-DVE2	12/24V 8-Door Core Series Smart Hub - E2 Enclosure Shipped separately: Avigilon Access Control Core (OP-CR-ACC), Avigilon 8-Port Board (OP-EX-8E)
---------------	--

# SUPPORT

For more information, visit [avigilon.com](https://www.avigilon.com) or [sales@avigilon.com](mailto:sales@avigilon.com) for product support.



AVIGILON