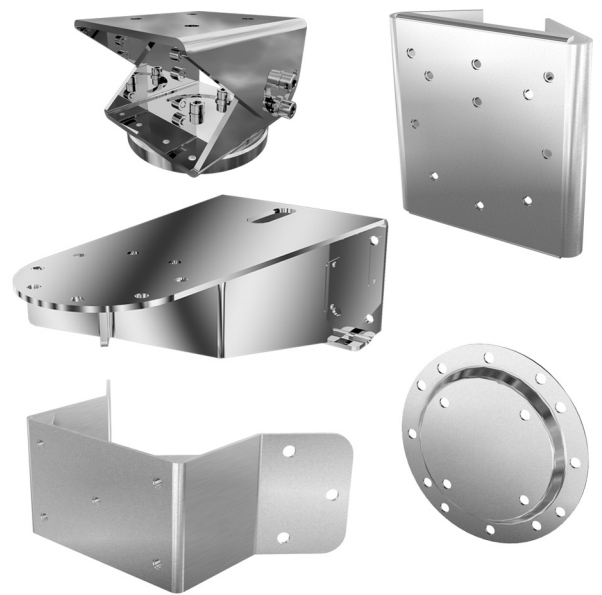




ExSite Enhanced Series Mounts



**WXM200
CMXM200
PAXM200**

**PXM200
AXM200**

Important Safety Instructions

1. Read these instructions.
2. Keep these instructions.
3. Heed all warnings.
4. Follow all instructions.
5. Use only with the cart, stand, tripod, bracket, or table specified by the manufacturer, or sold with the apparatus. When a cart is used, use caution when moving the cart/apparatus combination to avoid injury from tip-over.
6. Installation should be done only by qualified personnel and conform to all local codes.
7. Unless the unit is specifically marked as a NEMA Type 3, 3R, 3S, 4, 4X, 6, or 6P enclosure, it is designed for indoor use only and it must not be installed where exposed to rain and moisture.
8. Use only installation methods and materials capable of supporting four times the maximum specified load.
9. Use stainless steel hardware to fasten the mount to outdoor surfaces.

CAUTION: These servicing instructions are for use by qualified service personnel only. To reduce the risk of electric shock do not perform any servicing other than that contained in the operating instructions unless you are qualified to do so.

CAUTION: Danger of explosion if battery is incorrectly replaced. Replace only with the same or equivalent type. Dispose of used batteries according to the instructions provided by the battery manufacturer.

Only use replacement parts recommended by Pelco.

The product and/or manual may bear the following marks:



This symbol indicates that dangerous voltage constituting a risk of electric shock is present within this unit.



This symbol indicates that there are important operating and maintenance instructions in the literature accompanying this unit.

CAUTION:

RISK OF ELECTRIC SHOCK.
DO NOT OPEN.

Description

This manual contains the installation instructions for the following ExSite™ Enhanced Series mounts:

- WXM200 Wall mount designed to mount the ExSite Enhanced Series system directly to a load-bearing vertical surface.
- CMXM200 Corner adapter for use with the WXM200 to mount an ExSite Enhanced Series system to the corner of a structure.
- PAXM200 Pole adapter for use with the WXM200 to mount a system to a horizontal pole.
- PXM200 Pedestal mount designed to mount an ExSite Enhanced Series system directly to a horizontal surface in either an upright or inverted position.
- AXM200 Adjustable mount for ExSite Enhanced Models that enables pan/tilt adjustment.

| Model | Supplied Hardware | Mounting Surface | Recommended Hardware |
|---------|---|---|---|
| WXM200 | None | Solid Concrete* | Five 3/8-16 x 1-9/16-inch long stainless steel drop-in anchors and five 3/8-16 x 1.0-inch thread length, stainless steel hex head bolts with stainless steel lock washers |
| | | Steel I Beam** | Five 3/8-16 x 1.0-inch thread length, stainless steel hex head bolts with stainless steel lock washers and 3/8-16 stainless steel nuts |
| CMXM200 | Five M10x1.5x20 mm thread length, stainless steel socket head bolts with lock washers to attach the adapter to the WXM200 wall mount | Solid Concrete* | Six 1/2-13 x 2-inch stainless steel drop-in anchors and six 1/2-13 x 1.0-inch thread length, stainless steel hex head bolts with stainless steel lock washers |
| | | Steel I Beam** | Six 1/2-13 x 1.0-inch thread length, stainless steel hex head bolts with stainless steel lock washers and 1/2-13 stainless steel nuts |
| PAXM200 | Four 5/8-inch wide x 40-inch (101.6 cm) long stainless steel straps to attach the adapter to a pole Five M10x1.5x20 mm thread length, stainless steel socket head bolts with lock washers to attach the adapter to the WXM200 wall mount | Steel pole with a diameter between 4 and 9 inches (10.16 to 22.86 cm) | Supplied |
| PXM200 | None | Solid Concrete* | Five 3/8-16 x 1-9/16-inch long stainless steel drop-in anchors and five 3/8-16 x 1.0-inch thread length, stainless steel hex head bolts with stainless steel lock washers |
| | | Steel I Beam** | Five 3/8-16 x 1.0-inch thread length, stainless steel hex head bolts with stainless steel lock washers and 3/8-16 stainless steel nuts |
| AXM200 | M10x1.5x20 mm stainless steel socket head bolts and lock washers | Solid Concrete* | Industry standard 101.6 mm Bolt circle for use with M8 countersunk screws (not supplied). |
| | | Steel I Beam** | Four M10x1.5x16 mm thread strength, stainless steel socket cap head bolts and lock washers are supplied for use with WXM200 or PXM200. |

*Recommended strength of concrete is 3,600 psi or 25 Mpa.

**Minimum of 1/8-inch wall.

Installation

WXM200 WALL MOUNT

To install the WXM200 refer to Figure 1 and perform the following steps:

1. Determine the mounting location. The mounting surface should be able to support four times the combined weight of the mount and ExSite Enhanced system.
2. Using the flanged end of the wall mount as a template, mark the five fastener hole positions onto the mounting surface. Set the WXM200 mount to the side and prepare the holes for the fasteners.
3. Position the wall mount over the mounting holes. Attach the mount to the mounting surface with the appropriate hardware (not supplied).
4. Secure the ExSite Enhanced power module to the WXM200 with the 8 mm Allen wrench and four M10 x 16 mm stainless steel bolts supplied with the power module. Tighten the bolts to 25 to 27 ft-lb (34 to 37 Nm).
5. Complete the ExSite Enhanced system installation following the instructions supplied with the equipment.

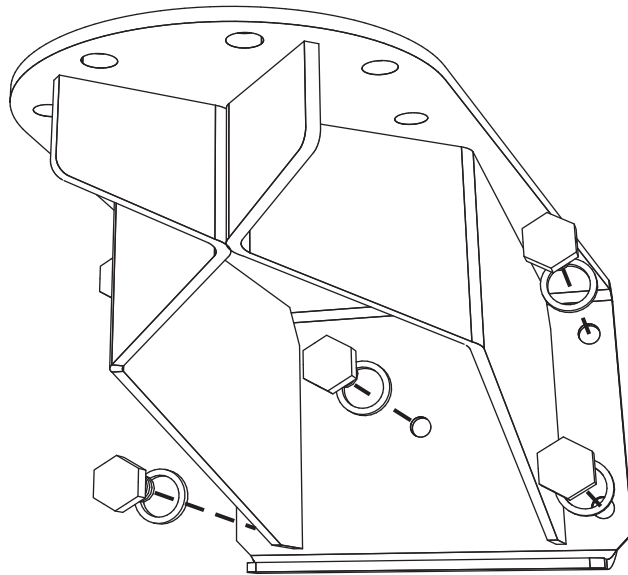


Figure 1.

WXM200 Installation

CMXM200 CORNER MOUNT ADAPTER

To install the CMXM200 refer to Figure 2 and perform the following steps:

1. Attach the corner mount adapter to the mounting surface with the appropriate hardware (not supplied). The mounting surface should be able to support four times the combined weight of the corner mount adapter, WXM200 mount, and ExSite Enhanced system.
2. Attach the WXM200 wall mount to the corner mount adapter with the supplied five M10x1.5x20 mm thread length, stainless steel socket head bolts and stainless steel lock washers. Tighten bolts to 25 to 27 ft-lb (34 to 37 Nm).
3. Secure the ExSite Enhanced power module to the WXM200 with the 8 mm Allen wrench and four M10 x 16 mm stainless steel bolts supplied with the power module. Tighten the bolts to 25 to 27 ft-lb (34 to 37 Nm).
4. Complete the ExSite Enhanced system installation following the instructions supplied with the equipment.

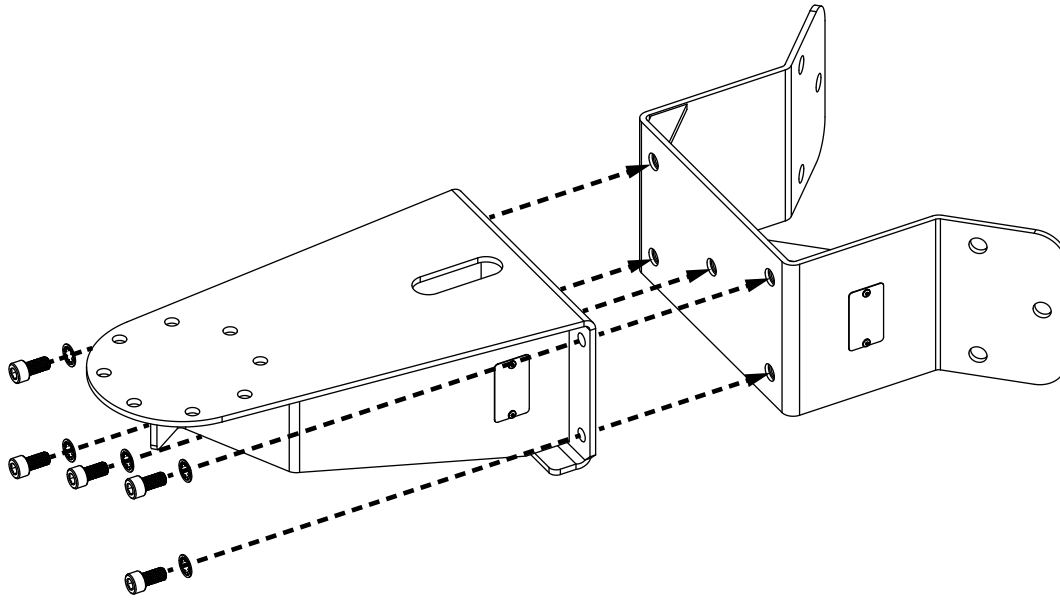


Figure 2.

CMXM200 Installation

PAXM200 POLE MOUNT ADAPTER

Install the PAXM200 to a steel pole with a diameter between 4 and 9 inches (10.16 to 22.86 cm). Refer to Figure 3 and perform the following steps:

1. Attach the pole mount adapter to the pole with the four stainless steel straps (supplied). Tighten the clamps of the straps to 6.25 to 7.5 ft-lb (8.5 to 10.2 Nm).
2. Attach the WXM200 wall mount to the pole mount adapter with the supplied five 3/8-16 x 1.0-inch thread length, stainless steel socket head bolts and stainless steel lock washers. Tighten to 25 to 27 ft-lb (34 to 37 Nm).
3. Secure the ExSite Enhanced power module to the WXM200 with the 8 mm Allen wrench and four M10 x 16 mm stainless steel bolts supplied with the power module. Tighten the bolts to 25 to 27 ft-lb (34 to 37 Nm).
4. Complete the ExSite Enhanced system installation following the instructions supplied with the equipment.

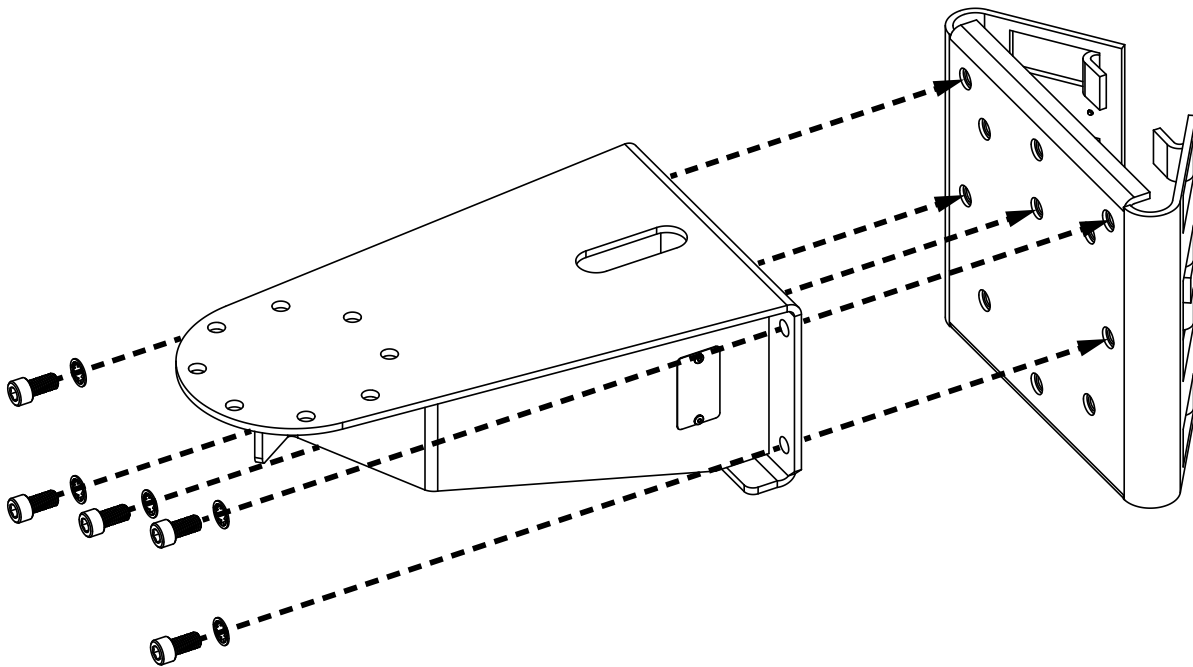


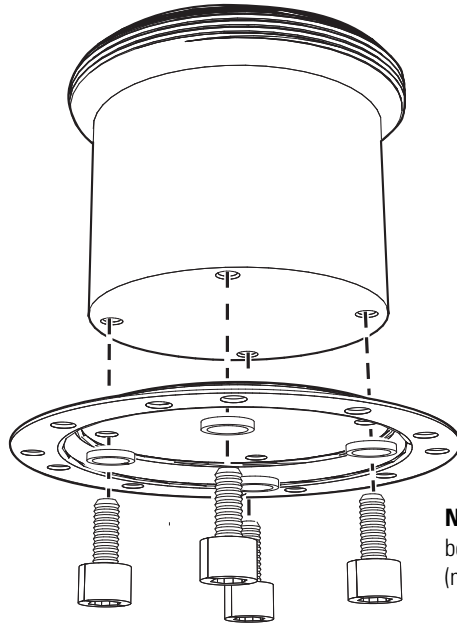
Figure 3.

PAXM200 Installation

PXM200 PEDESTAL MOUNT

The PXM200 mount is designed to make the installation and removal of the ExSite Enhanced power module quick and easy. To install the PXM200 refer to Figure 4 and perform the following steps:

1. Attach the power module of the ExSite Enhanced system to the pedestal mount with four M10 x 16 mm stainless steel bolts and lock washers supplied with the power module (refer to Figure 4). Tighten the bolts to 25 to 27 ft-lb (34 to 37 Nm).



NOTE: Figure 4 shows the power module being installed on a PXM200 pedestal mount (not supplied).

Figure 4.

Attach Power Module to PXM200

2. Attach the pedestal mount to the mounting surface with the appropriate hardware (not supplied).
3. Complete the ExSite Enhanced system installation following the instructions supplied with the equipment.

AXM200 ADJUSTABLE MOUNT

The AXM200 mount is an adjustable mount that enables manual pan/tilt adjustment. To install the AXM200 refer to the following steps:

1. Attach the baseplate to the mounting surface with M8 flat head screws of suitable length. Alternately, attach the baseplate to the Wall Mount Adapter (WXM200) (Figure 5) or Pedestal Plate (PXM200) (Figure 6) using the supplied M10x1.5x16 mm socket cap head bolts. Tighten the bolts to 34 to 37 Nm.

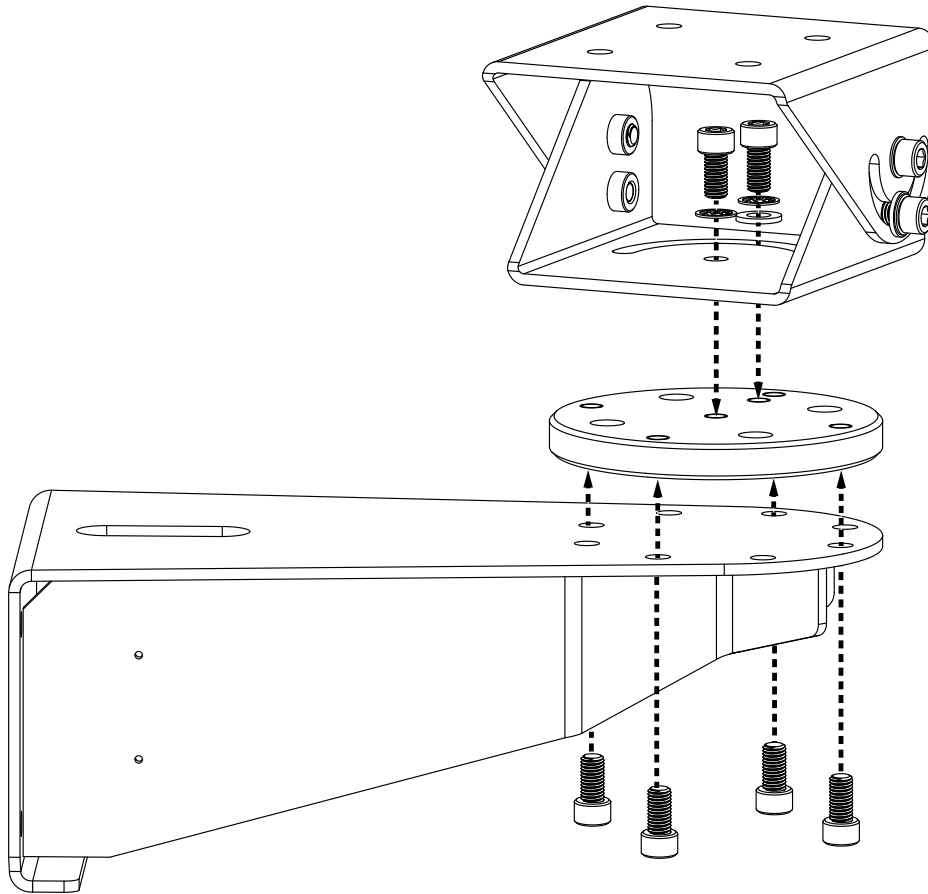


Figure 5.

AXM200 Installation with WXM200

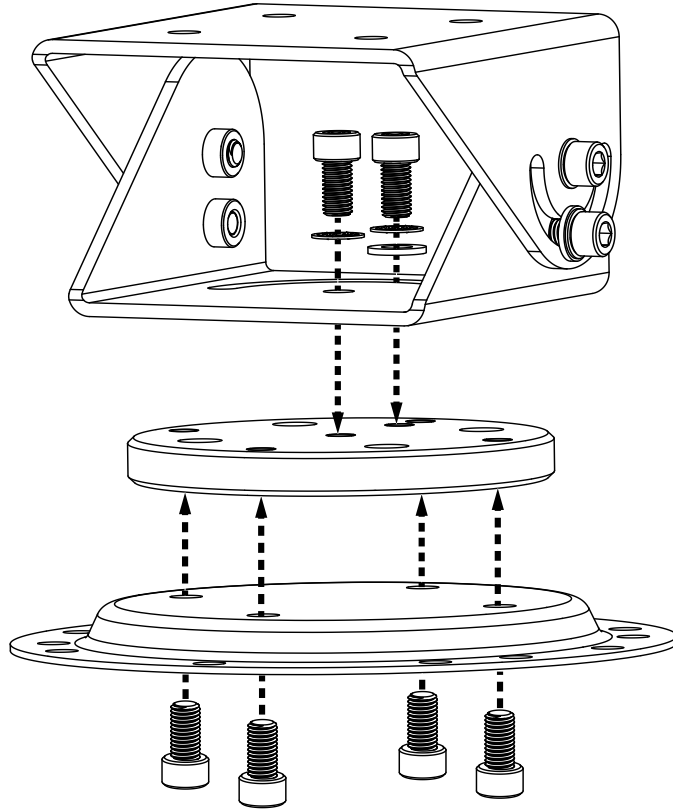


Figure 6.

AXM200 Installation with PXM200

2. Attach the swivel bracket to the baseplate using the supplied M10x1.5x20 mm socket cap head bolts and lock washers. the flat washer should be used with the bolt going through the slotted hole. Do not fully tighten the bolts.
3. Adjust the swivel bracket to the desired position. Tighten the six securing bolts to 34 to 37 Nm.
4. Complete the ExSite Enhanced system installation following the instructions with the supplied equipment.
5. Readjust the swivel bracket, if needed, and re-tighten the bolts to 34 to 38 Nm.



This equipment contains electrical or electronic components that must be recycled properly to comply with Directive 2002/96/EC of the European Union regarding the disposal of waste electrical and electronic equipment (WEEE). Contact your local dealer for procedures for recycling this equipment.

REVISION HISTORY

| Manual # | Date | Comments |
|----------|------|-------------------|
| C1352M | 9/17 | Original version. |



Pelco, Inc. 625 W. Alluvial, Fresno, California 93711 United States
USA & Canada Tel (800) 289-9100 Fax (800) 289-9150
International Tel +1 (559) 292-1981 Fax +1 (559) 348-1120
www.pelco.com www.pelco.com/community