

# WMVE Series Mounts

## WALL MOUNTS

### Product Features

- Indoor and Outdoor Installations Supported
- Durable Aluminum Mount Construction
- For Use with Sarix® Enhanced Series 3, Sarix Professional 3, and Optera® IMM Series
- Converts to Pole Mount with a PA101 Pole Mount Adapter (Available Separately)



The WMVE-SR, WMVE-BK, and WMVE-SW wall mounts can be installed directly to a wall or any vertical surface. Power and video wiring can be easily routed through the back of each mount or through the conduit access located on the bottom of the mount arm. The WMVE-SR, WMVE-BK, and WMVE-SW wall mounts can be adapted to pole mount applications using the PA101 pole mount adapter.

## MODEL

WMVE-SR	Light gray wall mount (RAL 7047) specifically designed for use with Optera IMM Series (outdoor models)
WMVE-SW	White wall mount (RAL 9003) specifically designed for use with the Sarix Enhanced Series 3 and Sarix Professional Series 3, and Optera IMM Series (indoor models)
WMVE-BK	Black wall mount (RAL 9005) for use with Optera IMM Series black models

## MECHANICAL

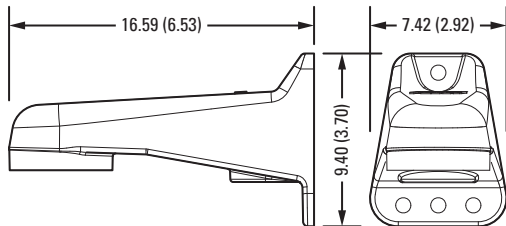
Mounting Method	Secure with 1/4-in. fasteners of appropriate type (not supplied); up to 4 fasteners can be used
Cable Entry	Through the back of the mount and one 1.9 cm (3/4 in.) conduit access on the bottom of the mount
Pole Mount Method	Attach to PA101 pole mount adapter bolts

## GENERAL

Construction	Aluminum Finish
Finish	
WMVE-SR	Light gray polyester powder coat (RAL 7047)
WMVE-SW	White polyester powder coat (RAL 9003)
WMVE-BK	Black polyester powder coat (RAL 9005)
Unit Weight	1.00 lb (0.45 kg)

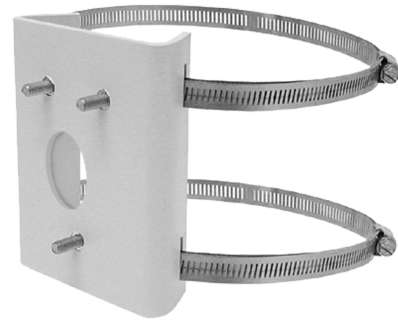


VALUES IN PARENTHESES ARE INCHES; ALL OTHERS ARE CENTIMETERS.  
DRAWINGS AND DIMENSIONS NOT TO SCALE.



## RELATED PRODUCT

PA101	Pole mount adapter for WMVE-SR/WMVE-SW mounts when used in pole mount applications. Stainless steel straps supplied. Straps fit 7.62 cm (3 in.) to 20.3 cm (8 in.) diameter pole.
IMM-CM	Corner mount (outer) for use with WMVE-SR wall mount



### Pelco, Inc.

625 W. Alluvial, Fresno, California 93711 United States

**USA & Canada** Tel (800) 289-9100 Fax (800) 289-9150

**International** Tel +1 (559) 292-1981 Fax +1 (559) 348-1120

[www.pelco.com](http://www.pelco.com) [www.pelco.com/community](http://www.pelco.com/community)

Pelco, the Pelco logo, and other trademarks associated with Pelco products referred to in this publication are trademarks of Pelco, Inc. or its affiliates. ONVIF and the ONVIF logo are trademarks of ONVIF Inc. All other product names and services are the property of their respective companies.

Product specifications and availability are subject to change without notice.

©Copyright 2020, Pelco, Inc. All rights reserved.